

EXPLANATORY PLAN OF
 LEASED PORTION OF THE GROUND
 FLOOR OF A BUILDING LOCATED ON
 LOT 2, PLAN 20564
 DISTRICT LOTS 2611 & 8169
 CARIBOO DISTRICT-BRITISH COLUMBIA

G.K.

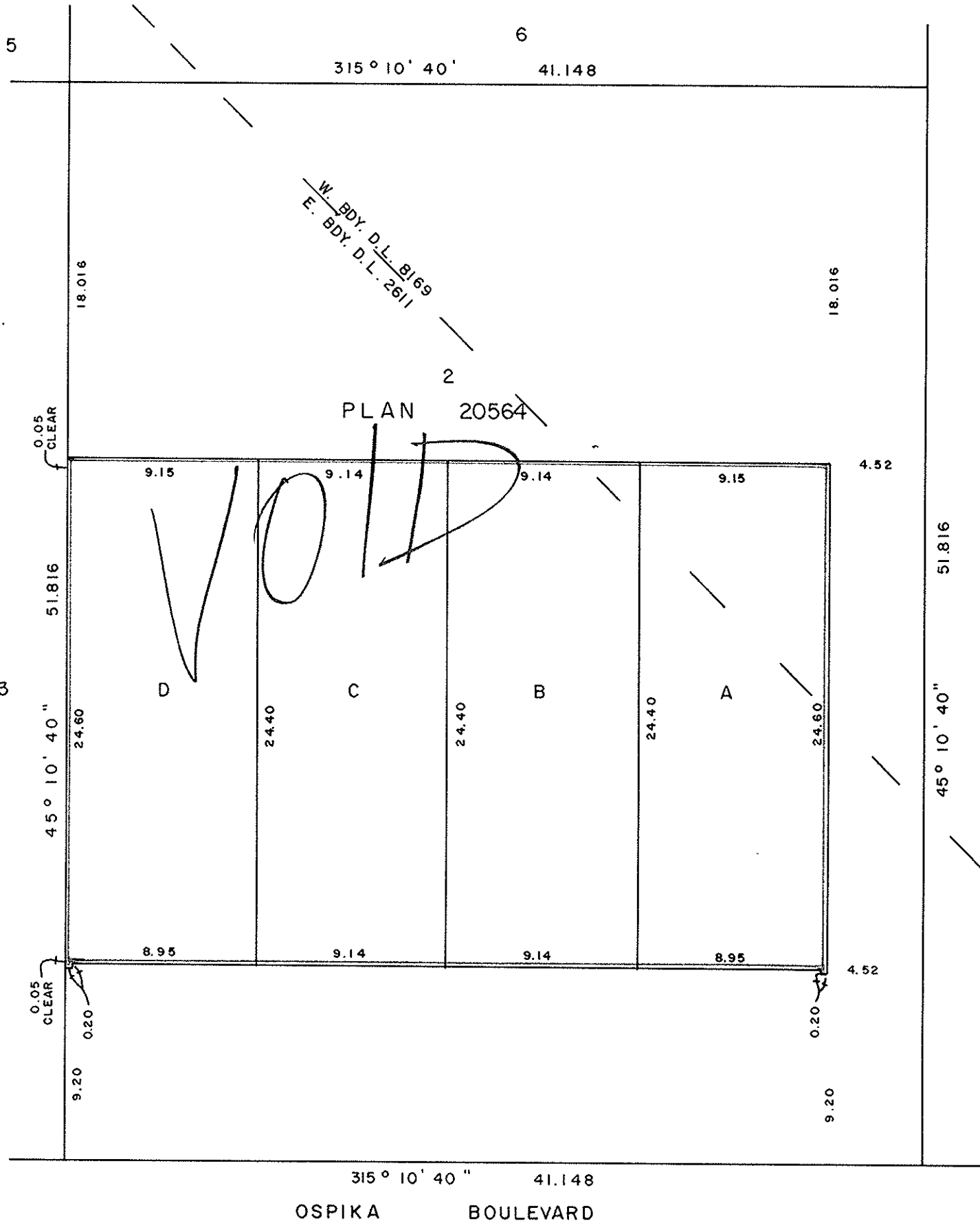
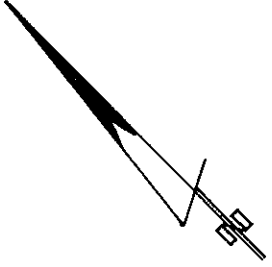
SCALE: 1 : 250

NOTE: Bearings are astronomic, derived from Plan 20564.

PLAN No 26936

Deposited in the Land Title Office at Prince George, B.C. this 27 day of Feb., 1981.

F.S. Raw
Registrar



CERTIFIED CORRECT
 This 30 day of JAN, 1981.

[Signature]
 D. A. DUFFY, B.C.L.S.

W. D. USHER & ASSOCIATES
 LAND SURVEYORS
 PRINCE GEORGE — B. C.
 LT 59 12371