

PLAN OF SUBDIVISION OF  
 LOT 14, PLAN 16997  
 DISTRICT LOT 1427  
 CARIBOO DISTRICT—BRITISH COLUMBIA

PLOTTED

GN

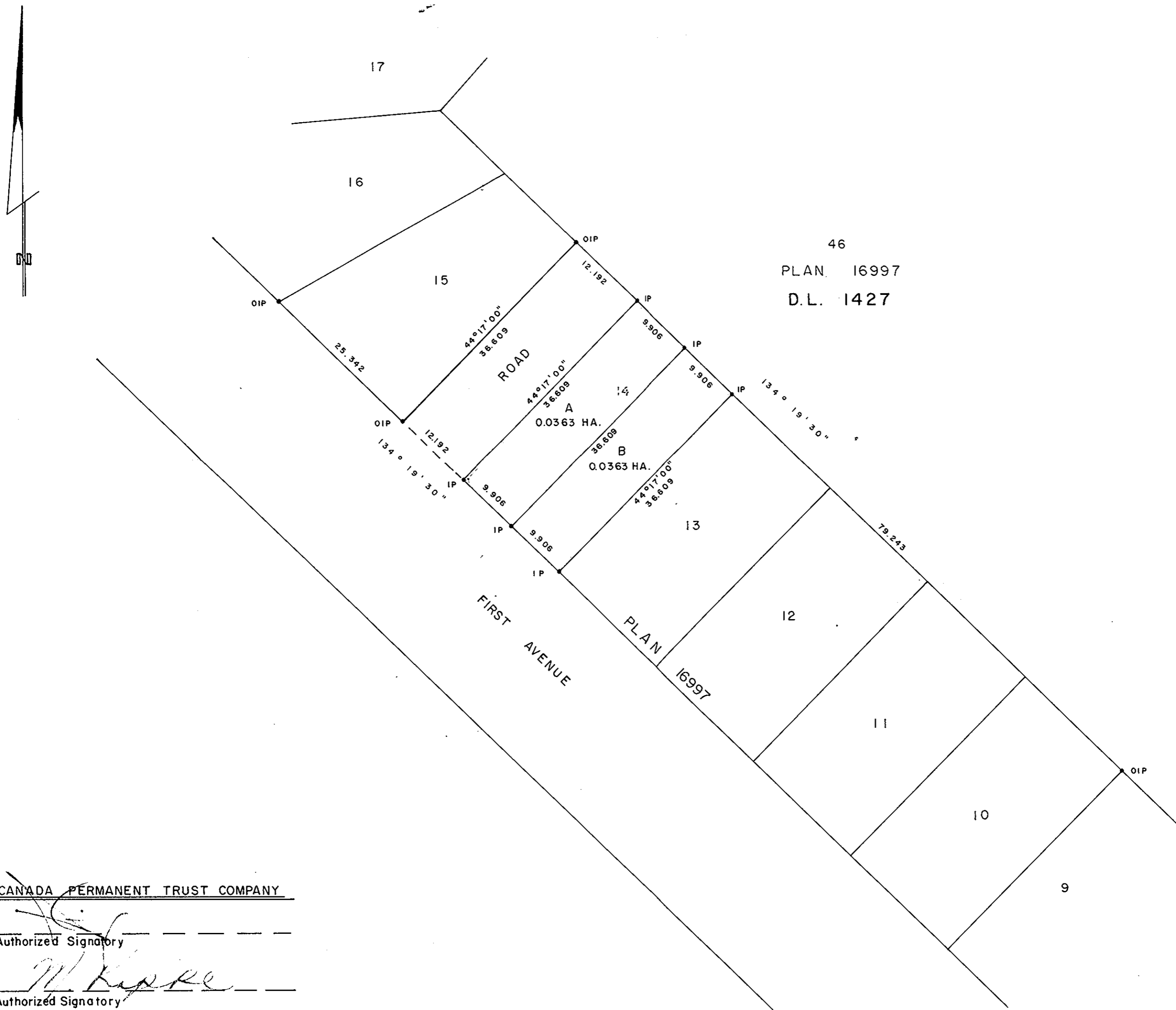
SCALE: 1 : 500

NOTE: Bearings are astronomic, derived from the southeasterly boundary of Lot 15, Plan 16997.

LEGEND: •OIP denotes an old iron pin found.  
 •IP denotes an iron pin set.

PLAN No 26919  
 Deposited in the Land Title Office at Prince George, B.C. this 24 day of Feb, 1981.

E. J. Ross  
 Registrar



46  
 PLAN 16997  
 D.L. 1427

CANADA PERMANENT TRUST COMPANY  
 \_\_\_\_\_  
 Authorized Signatory  
W. Kipke  
 \_\_\_\_\_  
 Authorized Signatory

I, DONALD A. DUFFY, a British Columbia Land Surveyor, of Prince George, in British Columbia, certify that I was present at and did personally superintend the survey represented by this plan, and that the survey and plan are correct. The survey was completed on the 30 day of OCT, 1980.

[Signature]  
 \_\_\_\_\_  
 Authorized Signatory

CENTRAL HOMES & DEVELOPMENT LTD.  
 \_\_\_\_\_  
 Authorized Signatory  
 \_\_\_\_\_  
 Authorized Signatory

Approved under the Land Title Act this 8 day of JAN, 1981.  
C. E. Obit  
 \_\_\_\_\_  
 Approving Officer, City of Prince George

This plan lies within the Fraser-Fort George Regional District.

W.D. USHER & ASSOCIATES  
 LAND SURVEYORS  
 PRINCE GEORGE — B.C.  
 OA 25 12029