

26-226

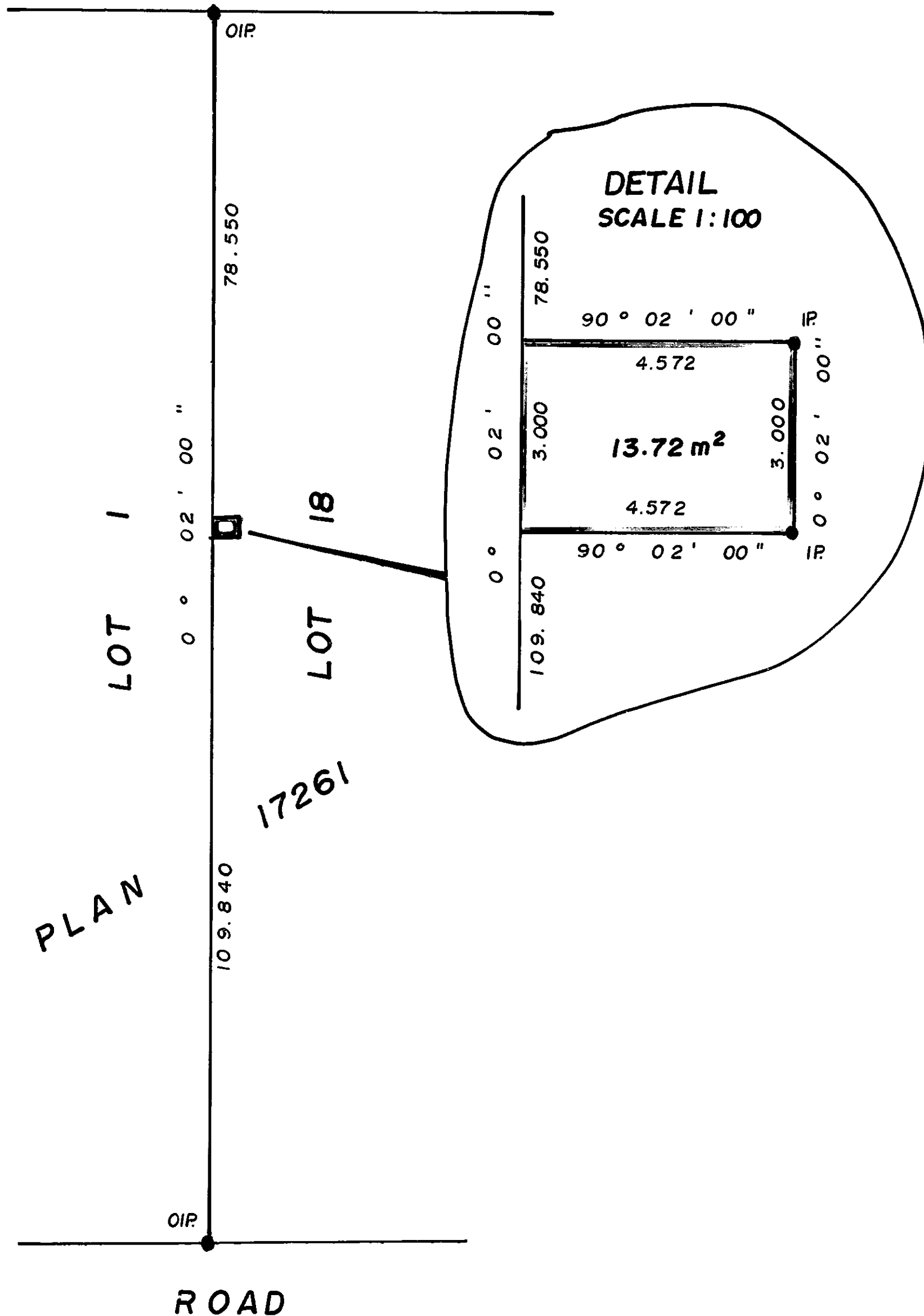
26916

S.E. 1/4 D.L. 1598

PLAN NO. 26916

DEPOSITED IN THE LAND TITLE OFFICE AT PRINCE GEORGE THIS 24 DAY OF FEB 1981

E.J. RAVEN REGISTRAR



REFERENCE PLAN OF EASEMENT IN LOT 18, PLAN 17261, DISTRICT LOT 1598, CARIBOO DISTRICT.

SCALE: 1:1000

ALL DISTANCES ARE IN METRES.

BEARINGS ARE ASTRONOMIC DERIVED FROM PLAN 17261.

● IP.....STANDARD IRON POST. ○.....DENOTES" OLD "

I, D. KEOWN, A BRITISH COLUMBIA LAND SURVEYOR OF PRINCE GEORGE IN BRITISH COLUMBIA CERTIFY THAT I WAS PRESENT AT AND PERSONALLY SUPERINTENDED THE SURVEY REPRESENTED BY THIS PLAN AND THAT THE SURVEY AND PLAN ARE CORRECT. THE SAID SURVEY WAS COMPLETED ON THE 22nd DAY OF SEPTEMBER, 1980.

BOOK OF REFERENCE	
Description	Area
LOT 18, PLAN 17261	13.72 m²

D. Keown D. KEOWN, B.C.L.S.

THIS PLAN LIES WITHIN THE FRASER FORT GEORGE REGIONAL DISTRICT.

McWILLIAM, WHYTE, GOBLE, & ASSOCIATES, B.C. LAND SURVEYORS, PRINCE GEORGE - KAMLOOPS - SMITHERS - SALMON ARM.

REF. NO. 80178 (D.L. 1598)