

PLOTTED (JM) (JN)

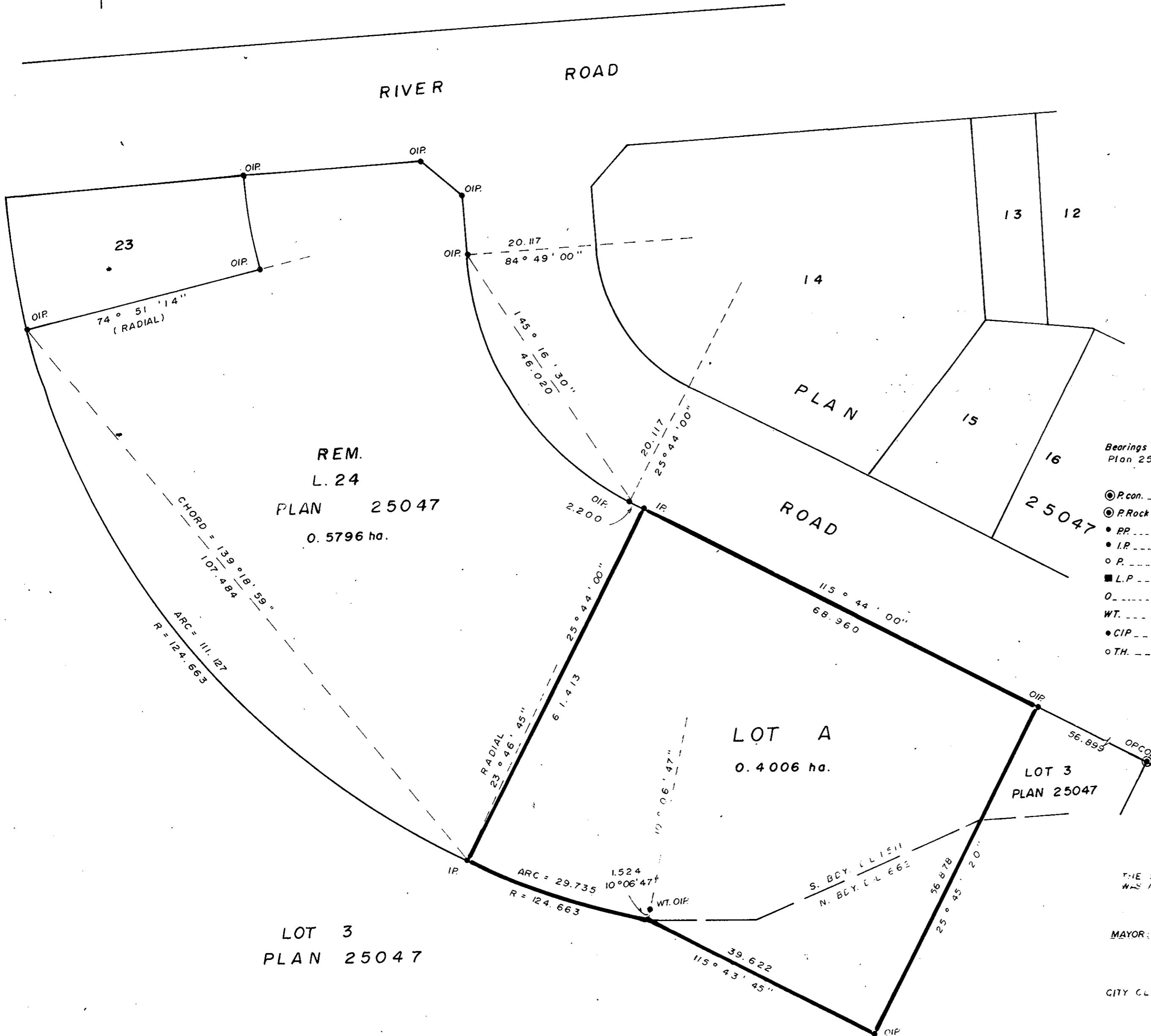
PLAN OF SUBDIVISION OF
PART OF LOT 24, PLAN 25047,
D.L. 1511 and D.L. 662,
CARIBOO DISTRICT.

Scale: 1:500
All distances are in metres.

PLAN 26906

Deposited in the Land Title Office
at Prince George, B.C.
on the 19 day of FEB 1981.

E.J. RAVEN
Registrar



Bearings are astronomic and are derived from
Plan 25047.

- ⊙ P.con. Standard Concrete Post.
- ⊙ P.Rock Standard Rock Post.
- P.P. Standard Pipe Post.
- I.P. Standard Iron Post.
- P. Wooden Post.
- L.P. Lead Plug.
- Denoting "Old"
- WT. Denoting "Witness"
- C.I.P. Capped Iron Post.
- T.H. Traverse Hub.

I, V. Bactell, a British Columbia
land surveyor, of Prince George,
in British Columbia, certify that I was present
at and personally superintended the survey
represented by this plan, and that the survey
and plan are correct. The survey was completed
on the 5 day of September 19 80.

V. Bactell
B.C.L.S.

Approved under the Land Title Act on
the 26 day of JAN. 19 81.

C. E. Olot
Approving Officer
CITY OF PRINCE GEORGE.

This Plan lies within the Fraser-Fort George
Regional District

"BY REASON OF THE POSSIBILITY OF FLOODING,
APPROVAL OF THIS SUBDIVISION PLAN IS GRANTED
SUBJECT TO THE CONDITION THAT THERE BE
CONCURRENT REGISTRATION OF A COVENANT
PURSUANT TO SECTION 215 OF THE LAND TITLE
ACT, EACH PAGE OF WHICH SAID COVENANT HAS
BEEN INITIALED BY ME FOR IDENTIFICATION."

THE SEAL OF THE CITY OF PRINCE GEORGE
WAS AFFIXED HERETO IN THE PRESENCE OF:

MAYOR: E. W. McIsaac

CITY CLERK: S. W. Buchanan

McWilliam-Whyte-Goble & Associates
B.C. Land Surveyors
Kamloops-Prince George-Salmon Arm-Smithers
FB/P File No. 80166