

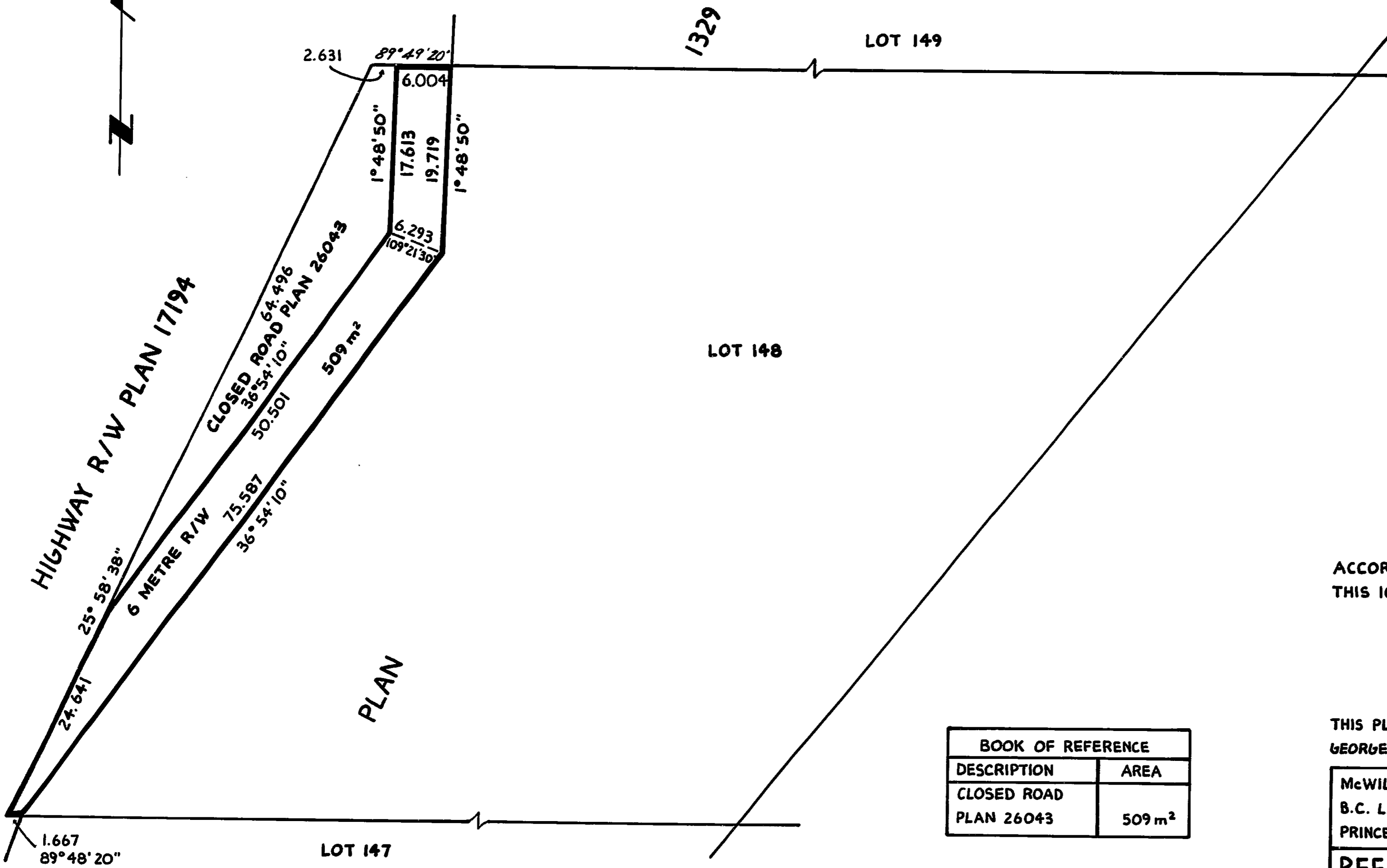
26

CITY OF PRINCE GEORGE
 EXPLANATORY PLAN OF STATUTORY RIGHT-OF-WAY
 IN CLOSED ROAD AS SHOWN ON BYLAW PLAN 26043,
 D.L. 4377, CARIBOO DISTRICT.

PLAN NO. **26886**
 DEPOSITED IN THE LAND TITLE OFFICE AT
 PRINCE GEORGE, B.C. THIS 17 DAY
 OF FEB. 1981.

--- E.J. RAVEN
 REGISTRAR

SCALE 1:500 ALL DISTANCES ARE IN METRES AND DECIMALS THEREOF.



CERTIFIED CORRECT
 ACCORDING TO PLAN 17194 AND PLAN 26043
 THIS 10th DAY OF FEBRUARY, 1981.

Vicki Bartell
 V. BARTELL, B.C.L.S.

THIS PLAN LIES WITHIN THE FRASER FORT
 GEORGE REGIONAL DISTRICT.

BOOK OF REFERENCE	
DESCRIPTION	AREA
CLOSED ROAD PLAN 26043	509 m ²

McWILLIAM, WHYTE, GOBLE & ASSOCIATES,
 B.C. LAND SURVEYORS,
 PRINCE GEORGE - KAMLOOPS - SMITHERS - SALMON ARM

REF. NO. 79046 - R/W