

26

PLAN OF STATUTORY RIGHT-OF-WAY FOR MUNICIPAL UTILITY PURPOSES THROUGH LOTS 7,8,11,12,19 & 20 PLAN 26822, DISTRICT LOT 754 CARIBOO DISTRICT, BRITISH COLUMBIA

SCALE, 1:500

BEARINGS ARE ASTRONOMIC, DERIVED FROM THE NORTH BOUNDARIES OF LOTS 11 & 20 PLAN 24821

LEGEND

- OIP DENOTES AN OLD IRON PIN FOUND
- IP DENOTES AN IRON PIN SET

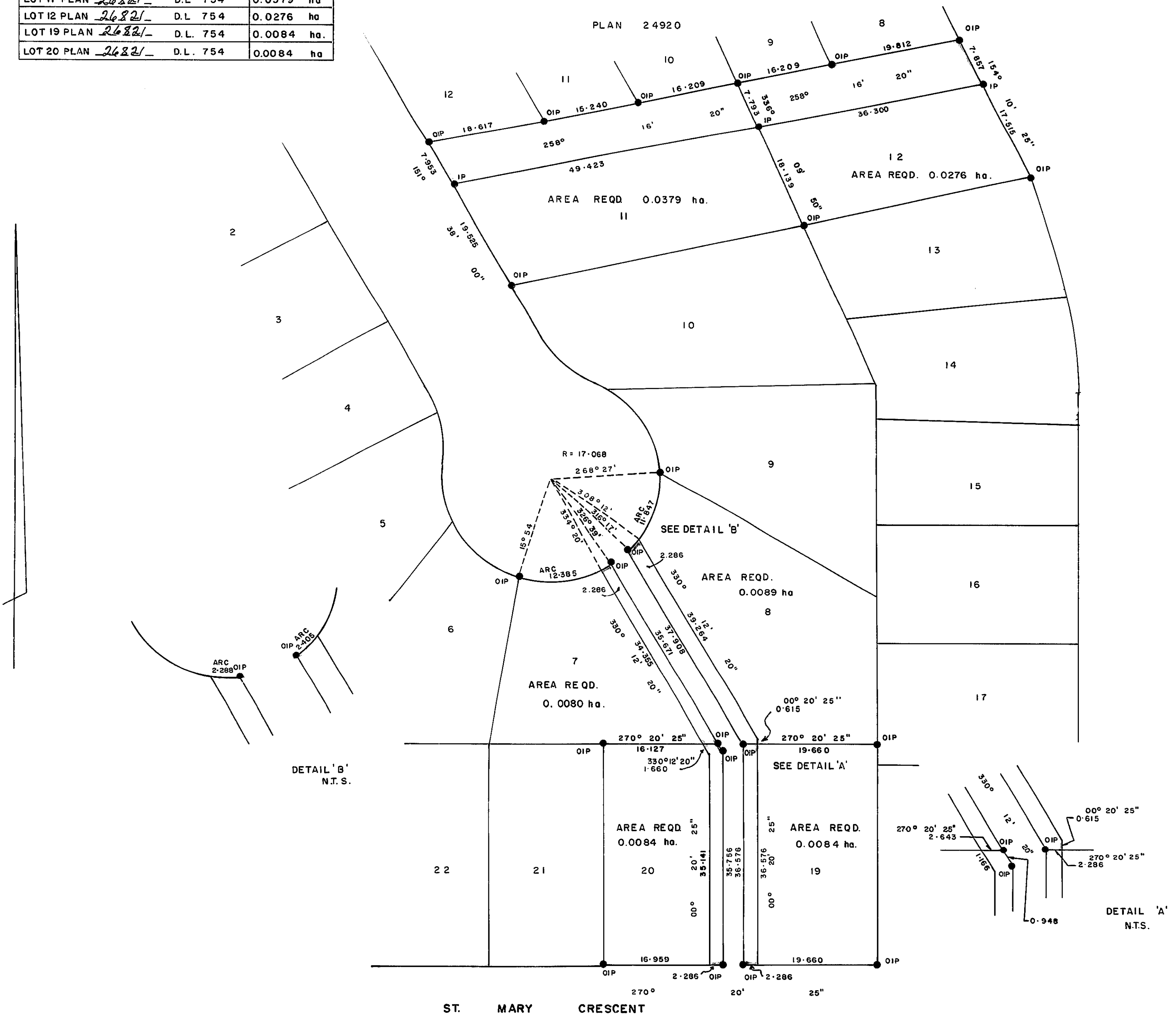
PLAN No 26822

Deposited in the Land Registry Office at Prince George, B.C. this 30 day of January, 1991.

E. A. Raven per. B.S. Registrar

BOOK OF REFERENCE

PARCEL	AREA REQD.
LOT 7 PLAN 26822 D.L. 754	0.0080 ha
LOT 8 PLAN 26822 D.L. 754	0.0089 ha
LOT 11 PLAN 26822 D.L. 754	0.0379 ha
LOT 12 PLAN 26822 D.L. 754	0.0276 ha
LOT 19 PLAN 26822 D.L. 754	0.0084 ha
LOT 20 PLAN 26822 D.L. 754	0.0084 ha



I, DONALD A. DUFFY of the City of Prince George, a British Columbia Land Surveyor, make oath and say that I was present at and did personally superintend the survey represented by this plan and that the survey and plan are correct. The said survey was completed on the 15 day of August, 1990.

[Signature]
DONALD A. DUFFY B.C.L.S.

Sworn before me this _____ day of _____, 19__.

A Commissioner for taking Affidavits for British Columbia.

This plan lies within the Fraser-Fort George Regional District.

W. D. USHER & ASSOCIATES
LAND SURVEYORS
PRINCE GEORGE — B.C.
7888F-01