

EXPLANATORY PLAN TO ACCOMPANY LEASE OF
 PART OF BUILDING & ADJACENT YARD & PARKING AREA EASEMENT
 ON LOT 16, PLAN 16905
 DISTRICT LOT 8169
 CARIBOO DISTRICT - BRITISH COLUMBIA

SCALE: 1 : 250

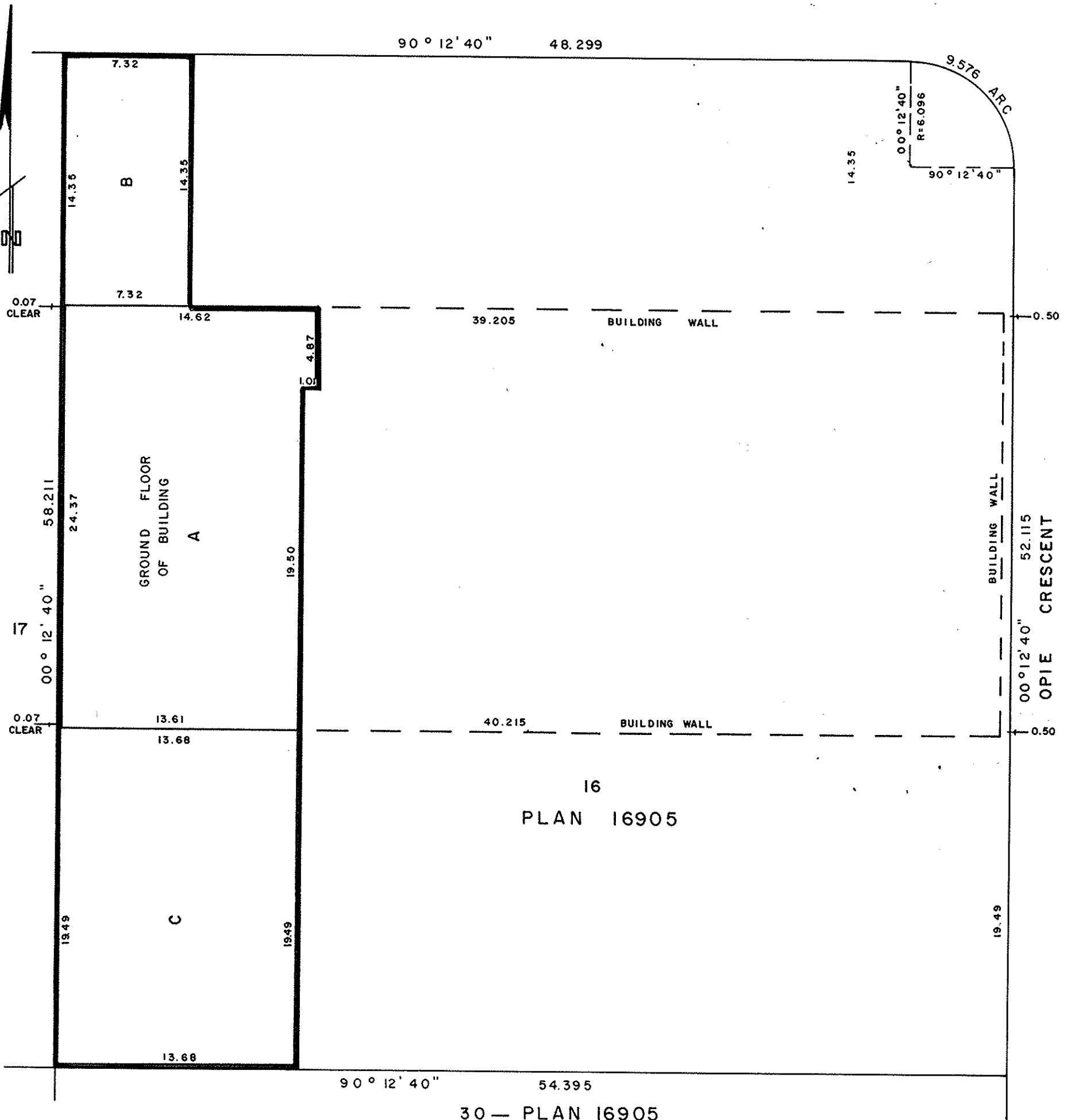
NOTE: Property dimensions are derived
 from Plan 16905.

PLAN N^o 26814

Deposited in the Land Title
 Office at Prince George, B.C. this
30 day of January, 1981.

E. J. Raven
 Registrar

OPIE CRESCENT



CERTIFIED CORRECT

This 27 day of MAY, 1980.

[Signature]

D.A. DUFFY, B.C.L.S.

W.D. USHER & ASSOCIATES
 LAND SURVEYORS
 PRINCE GEORGE - B.C.
 NE 15 11701