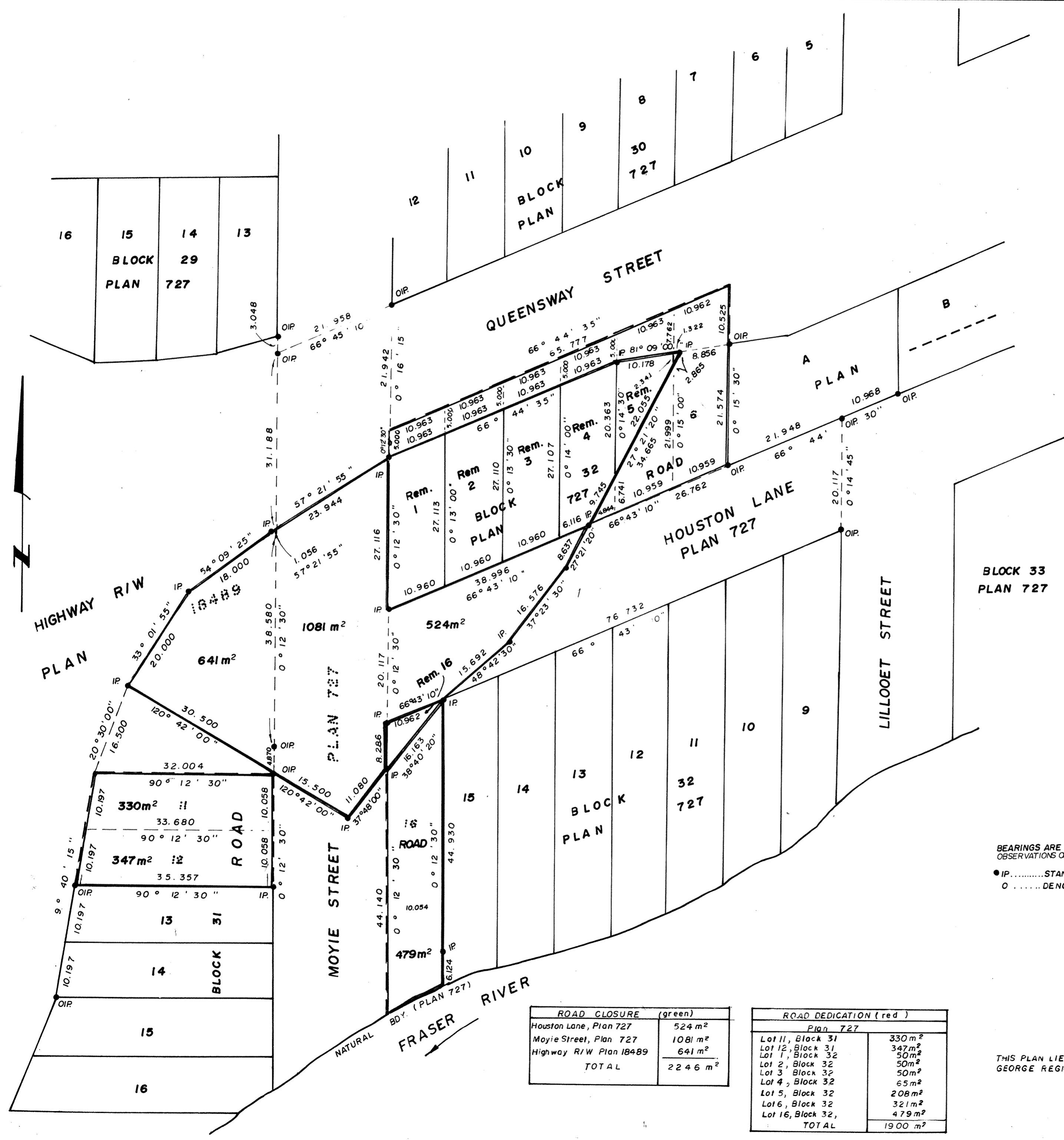


PLOTTED (JJ)

P0885

PLAN NO. 26804
 DEPOSITED IN THE LAND TITLE OFFICE AT
 PRINCE GEORGE THIS 22 DAY OF JANUARY 1981.

E.J. RAVEN
 REGISTRAR



PLAN TO ACCOMPANY ROAD EXCHANGE
 BY - LAW 3592
 CITY OF PRINCE GEORGE,
 CLOSING PART OF MOYIE STREET and
 PART OF HOUSTON LANE ADJOINING
 BLOCKS 31 and 32, OF PLAN 727, PART
 OF HIGHWAY RIGHT. OF-WAY AS SHOWN ON
 PLAN 18489,
 DEDICATION FOR ROAD-THE REMAINDER
 OF LOTS 11 and 12 OF BLOCK 31, PLAN 727,
 AND PARTS OF LOTS 1, 2, 3, 4, 5, 6 and 16,
 OF BLOCK 32, PLAN 727,
 D. L. 933, CARIBOO DISTRICT.
 SCALE: 1: 500.
 ALL DISTANCES ARE IN METRES.

BEARINGS ARE ASTRONOMIC DERIVED FROM
 OBSERVATIONS ON POLARIS AT LAT. 53° 54' 38" N
 LONG. 122° 32' 15" W
 ● IP.....STANDARD IRON POST.
 ○.....DENOTES "OLD"

I, V. BARTELL, A BRITISH COLUMBIA LANDSURVEYOR
 OF PRINCE GEORGE IN BRITISH COLUMBIA, CERTIFY
 THAT I WAS PRESENT AT AND PERSONALLY
 SUPERINTENDED THE SURVEY REPRESENTED BY
 THIS PLAN AND THAT THE SURVEY AND PLAN
 ARE CORRECT. THE SAID SURVEY WAS
 COMPLETED ON THE 21st DAY OF MAY 1980.

V. Bartell
 V. BARTELL, B.C.L.S.

ROAD CLOSURE (green)	
Houston Lane, Plan 727	524 m ²
Moyie Street, Plan 727	1081 m ²
Highway R/W Plan 18489	641 m ²
TOTAL	2246 m²

ROAD DEDICATION (red)	
Plan 727	
Lot 11, Block 31	330 m ²
Lot 12, Block 31	347 m ²
Lot 1, Block 32	50 m ²
Lot 2, Block 32	50 m ²
Lot 3, Block 32	50 m ²
Lot 4, Block 32	65 m ²
Lot 5, Block 32	208 m ²
Lot 6, Block 32	321 m ²
Lot 16, Block 32,	479 m ²
TOTAL	1900 m²

THIS PLAN LIES WITHIN THE FRASER FORT
 GEORGE REGIONAL DISTRICT.

Mc WILLIAM, WHYTE, GOBLE & ASSOCIATES,
 B.C. LAND SURVEYORS
 PRINCE GEORGE-KAMLOOPS-SMITHERS-SALMON ARM

REF. NO. 80081 DL 135

W 22.9.80