

PLOTTED (QU)

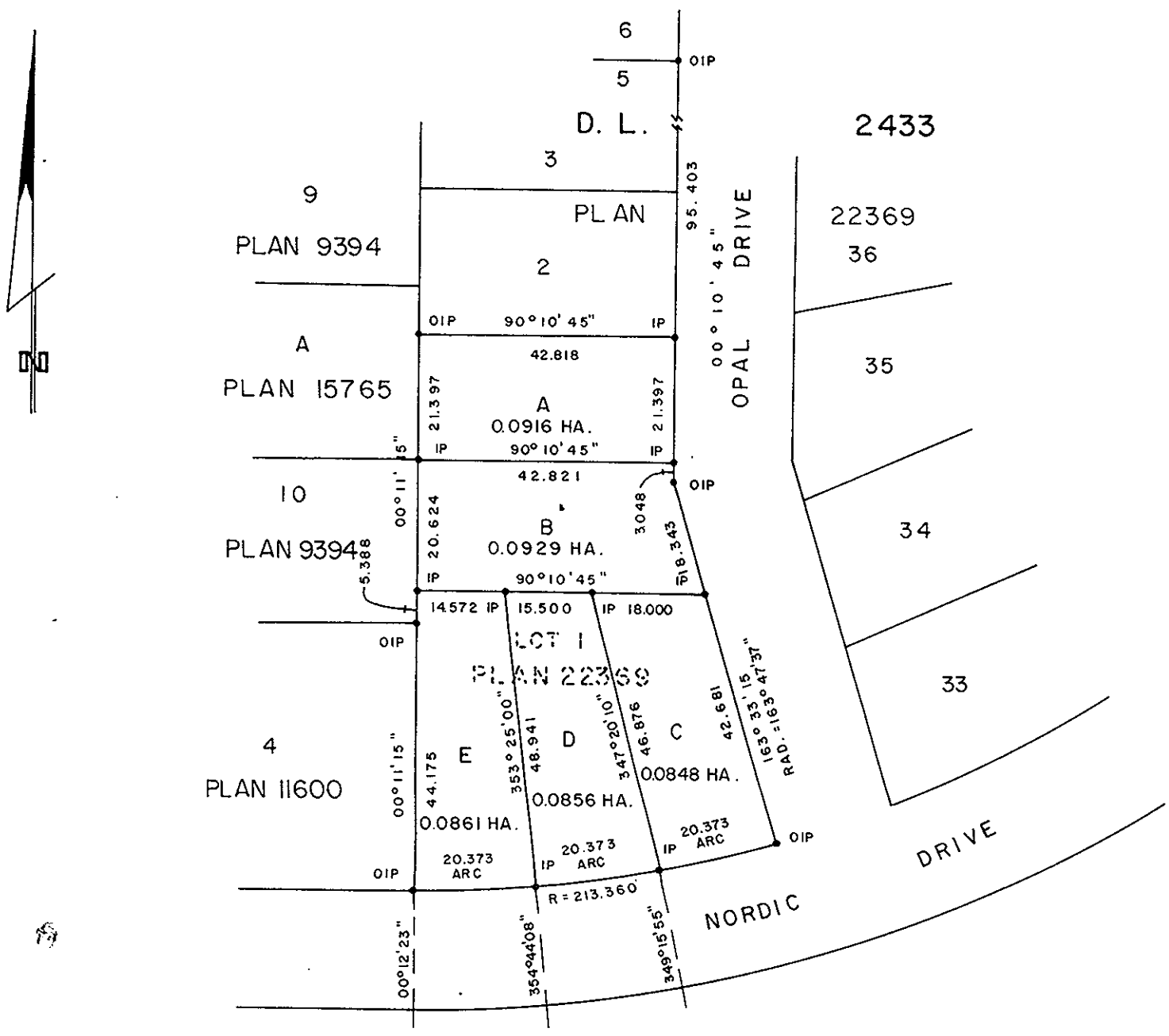
PLAN OF SUBDIVISION OF
 LOT 1, PLAN 22369
 DISTRICT LOT 2433
 CARIBOO DISTRICT - BRITISH COLUMBIA
 SCALE: 1 : 1000

NOTE: Bearings are astronomic, derived from the west boundary of Opal Drive, Plan 22369.

LEGEND: • OIP denotes an old iron pin found.
 • IP denotes an iron pin set.

PLAN No 26726
 Deposited in the Land Title Office at Prince George, B.C. this 9 day of June, 1981.

E.S. [Signature]
 Registrar



Mortgagee _____
 Witness _____
 Mortgagee _____
 Witness _____

I, DONALD A. DUFFY, a British Columbia Land Surveyor, of Prince George, in British Columbia, certify that I was present at and did personally superintend the survey represented by this plan, and that the survey and plan are correct. The survey was completed on the 20th day of Oct. 1980.

[Signature]

GLENVIEW ESTATES LTD.

 Authorized Signatory

Approved under the Land Title Act this 11 day of Dec, 1980

C. E. [Signature]
 Approving Officer, City of Prince George

This plan lies within the Fraser-Fort George Regional District.

W. D. USHER & ASSOCIATES
 LAND SURVEYORS
 PRINCE GEORGE - B.C.
 LS 77 10592