

26

PLAN OF EASEMENT THROUGH
LOT 1, PLAN 26717
DISTRICT LOT 4029
CARIBOO DISTRICT—BRITISH COLUMBIA

SCALE: 1 : 1000

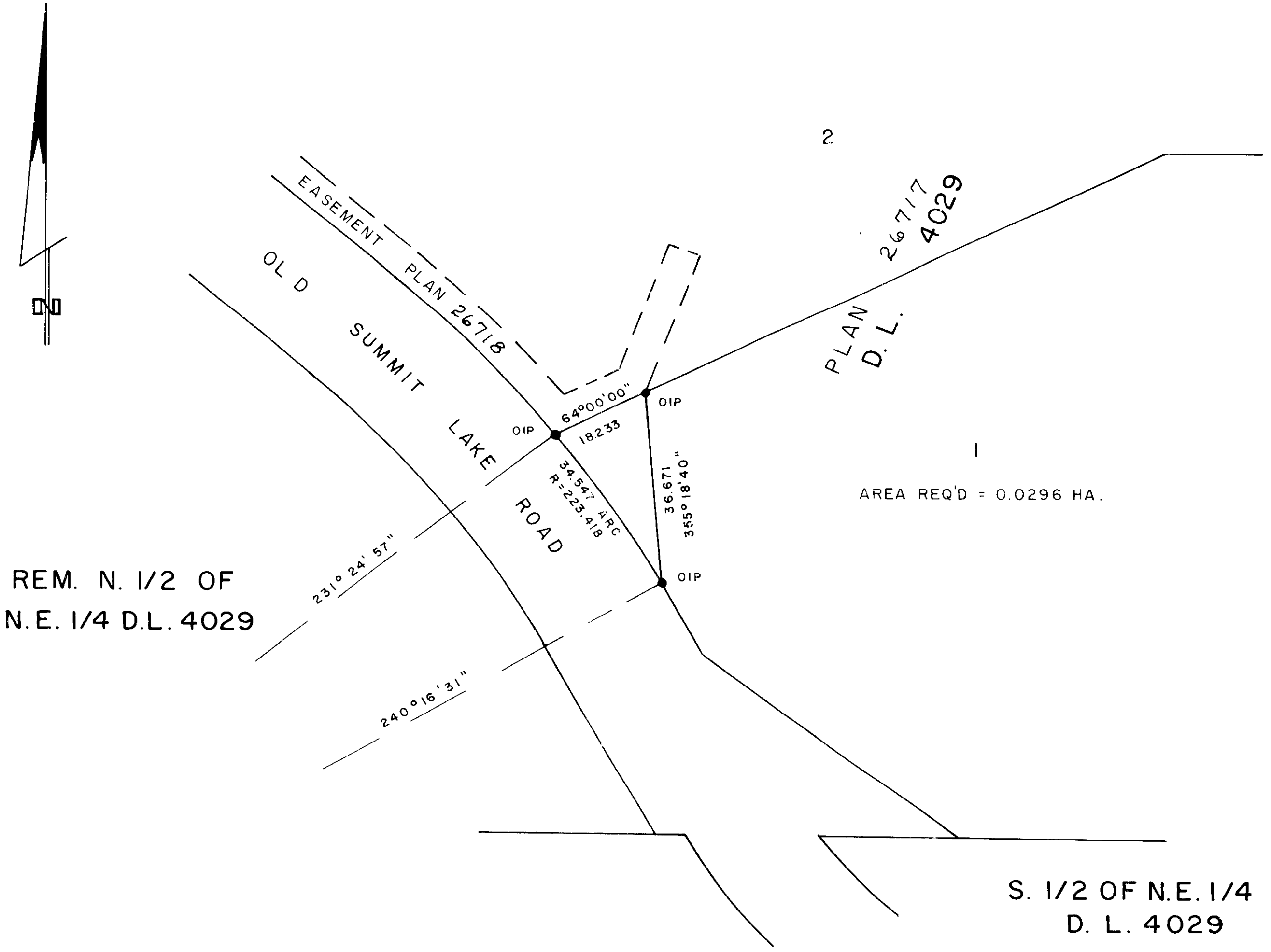
NOTE: Bearings are astronomic, derived from the
north boundary of Lot 1, Plan 26717

LEGEND: ●OIP denotes an old iron pin found.

PLAN No 26719

Deposited in the Land Title
Office at Prince George, B.C. this
7th day of January, 1980.

"E. J. Bowen" P.L. Registrar



REM. N. 1/2 OF
N.E. 1/4 D.L. 4029

S. 1/2 OF N.E. 1/4
D. L. 4029

I, DONALD A. DUFFY, a British Columbia Land
Surveyor, of Prince George, in British Columbia,
certify that I was present at and did personally
superintend the survey represented by this plan,
and that the survey and plan are correct. The
survey was completed on the 20 day of Aug
1980.

[Handwritten signature of Donald A. Duffy]

This plan lies within the Fraser- Fort George
Regional District.

W. D. USHER & ASSOCIATES
LAND SURVEYORS
PRINCE GEORGE — B.C.
3576 B