

26

PLAN OF EASEMENT THROUGH  
LOT 2, PLAN 26717  
DISTRICT LOT 4029  
CARIBOO DISTRICT — BRITISH COLUMBIA

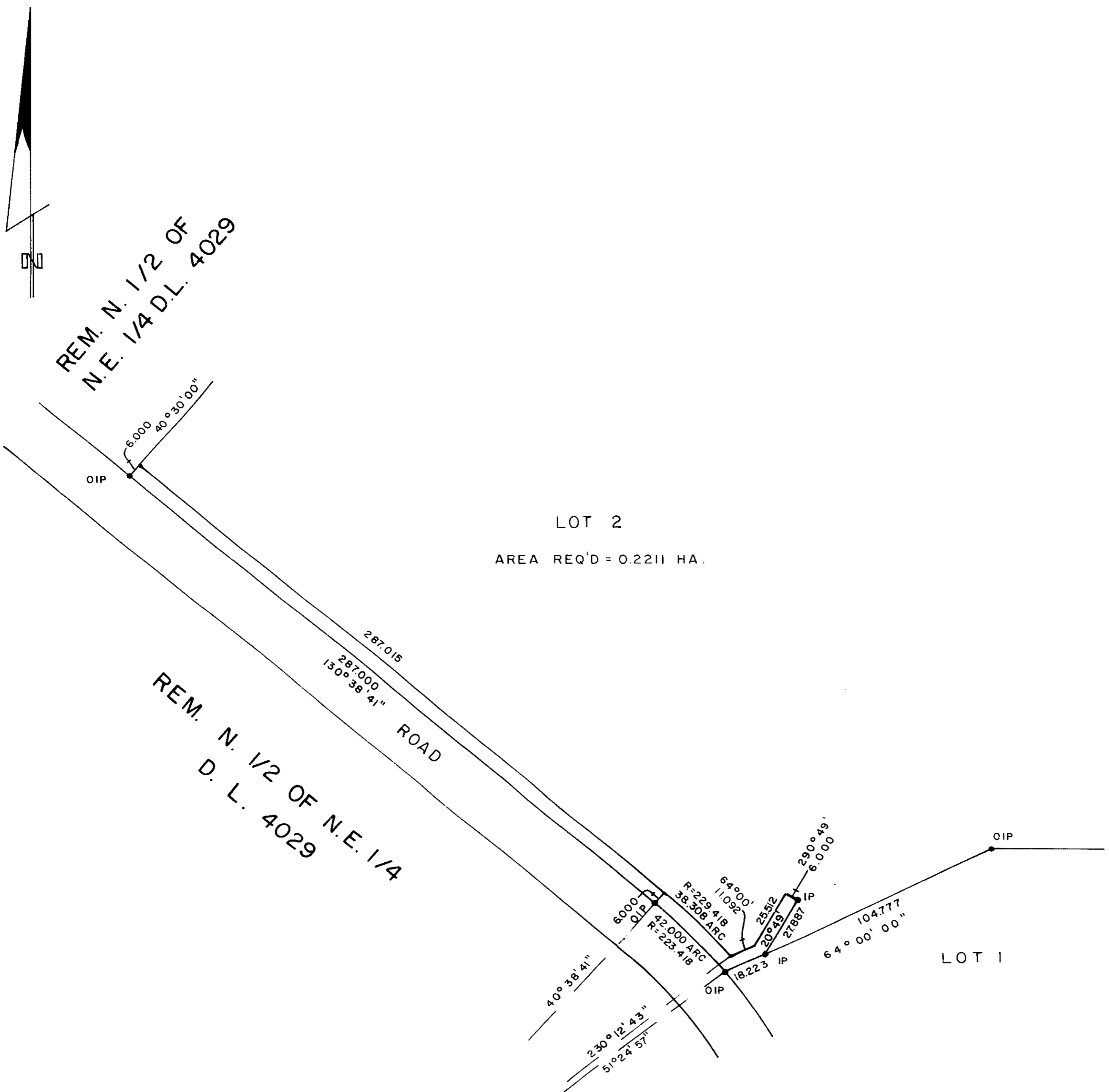
SCALE: 1 : 2000

NOTE: Bearings are astronomic, derived from the  
southwesterly boundary of Lot 2, Plan 26717

LEGEND: • OIP denotes an old iron pin found.  
• IP denotes an iron pin set.

PLAN No 26718  
Deposited in the Land Title  
Office at Prince George, B.C. this  
7<sup>th</sup> day of January, 1981.

E. J. Bowen per J. J.  
Registrar



LOT 2  
AREA REQ'D = 0.2211 HA.

LOT 1

I, DONALD A. DUFFY, a British Columbia Land  
Surveyor, of Prince George, in British Columbia,  
certify that I was present at and did personally  
superintend the survey represented by this plan,  
and that the survey and plan are correct. The  
survey was completed on the 29 day of August,  
1980.

This plan lies within the Fraser- Fort George  
Regional District.

W. D. USHER & ASSOCIATES  
LAND SURVEYORS  
PRINCE GEORGE — B.C.  
MO 35 3576 A