

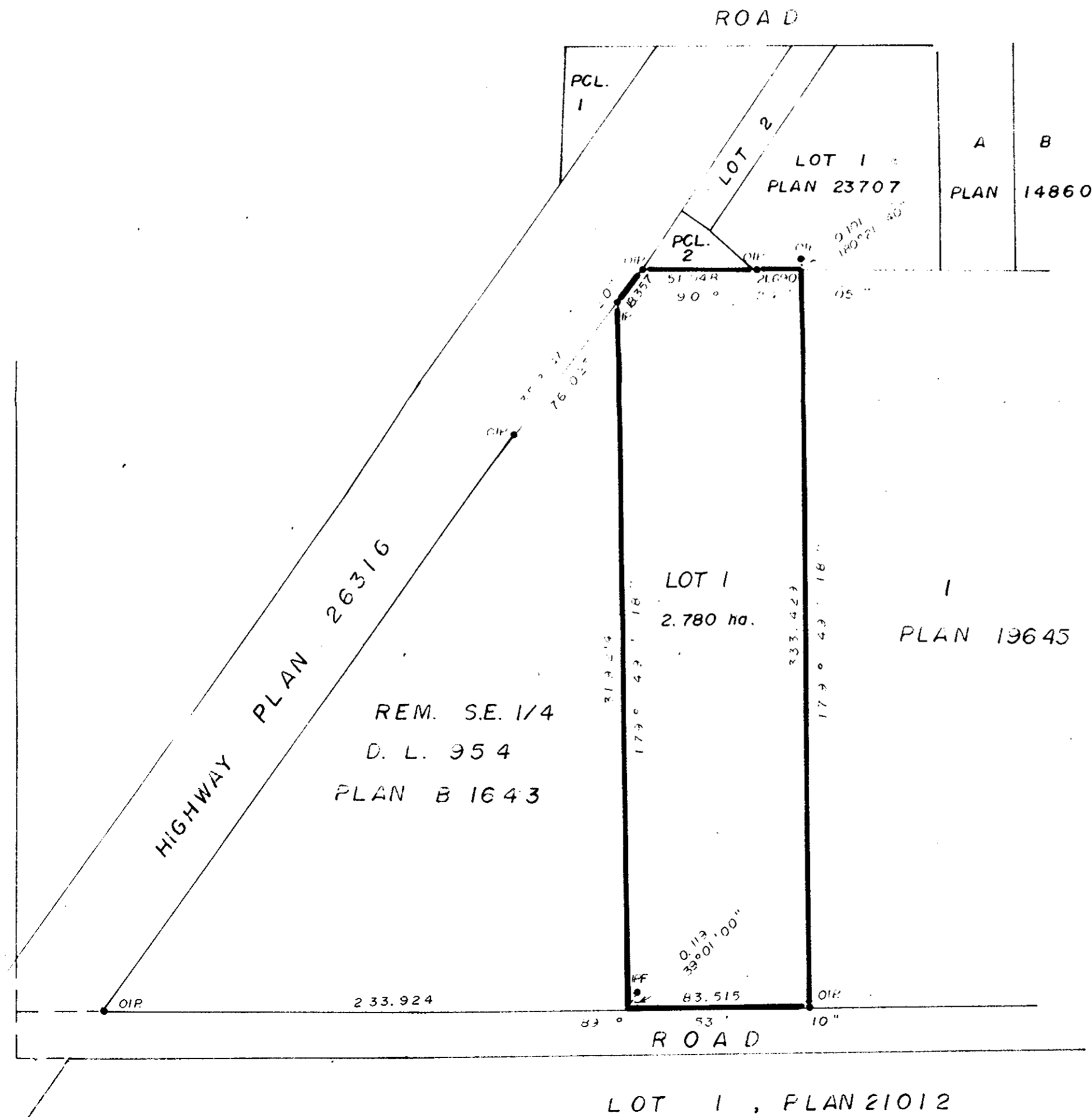
Plotted (NM)

PLAN OF SUBDIVISION
OF PART OF REMAINDER S.E. 1/4
D.L. 954, PLAN B1643, CARIBOO DISTRICT.

SCALE: 1:2000
ALL DISTANCES ARE IN METRES.

PLAN 26694
Deposited in the Land Title Office
at Prince George, B.C.
on the 23 day of December 1980.

E. RAVEN
Registrar



Bearings are astronomic and are derived from
HWY. PLAN 26316.

- P.con. Standard Concrete Post.
- P.Rock Standard Rock Post.
- PP Standard Pipe Post.
- IP Standard Iron Post.
- P. Wooden Post.
- L.P. Lead Plug.
- Denoting "Old"
- WT. Denoting "Witness"
- CIP Capped Iron Post.
- TH. Traverse Hub.

I, Dale Keown, a British Columbia
land surveyor, of Prince George,
in British Columbia, certify that I was present
at and personally superintended the survey
represented by this plan, and that the survey
and plan are correct. The survey was completed
on the 7 day of December 1980.

B.C.L.S.

Approved under the Land Title Act on
the 12 day of DEC 1980.

C. E. Oshot
Approving Officer

CITY ENGINEER - CITY OF PRINCE GEORGE

This Plan lies within the Fraser-Cariboo Regional District

OWNER: SEBASTIAN POTY

WITNESS:
ADDRESS:
POSTAL CODE:
OCCUPATION:

McWilliam-Whyte-Goble & Associates
B.C. Land Surveyors
Kamloops-Prince George-Salmon Arm-Smithers
FB/P DL 954 File No. 80141