

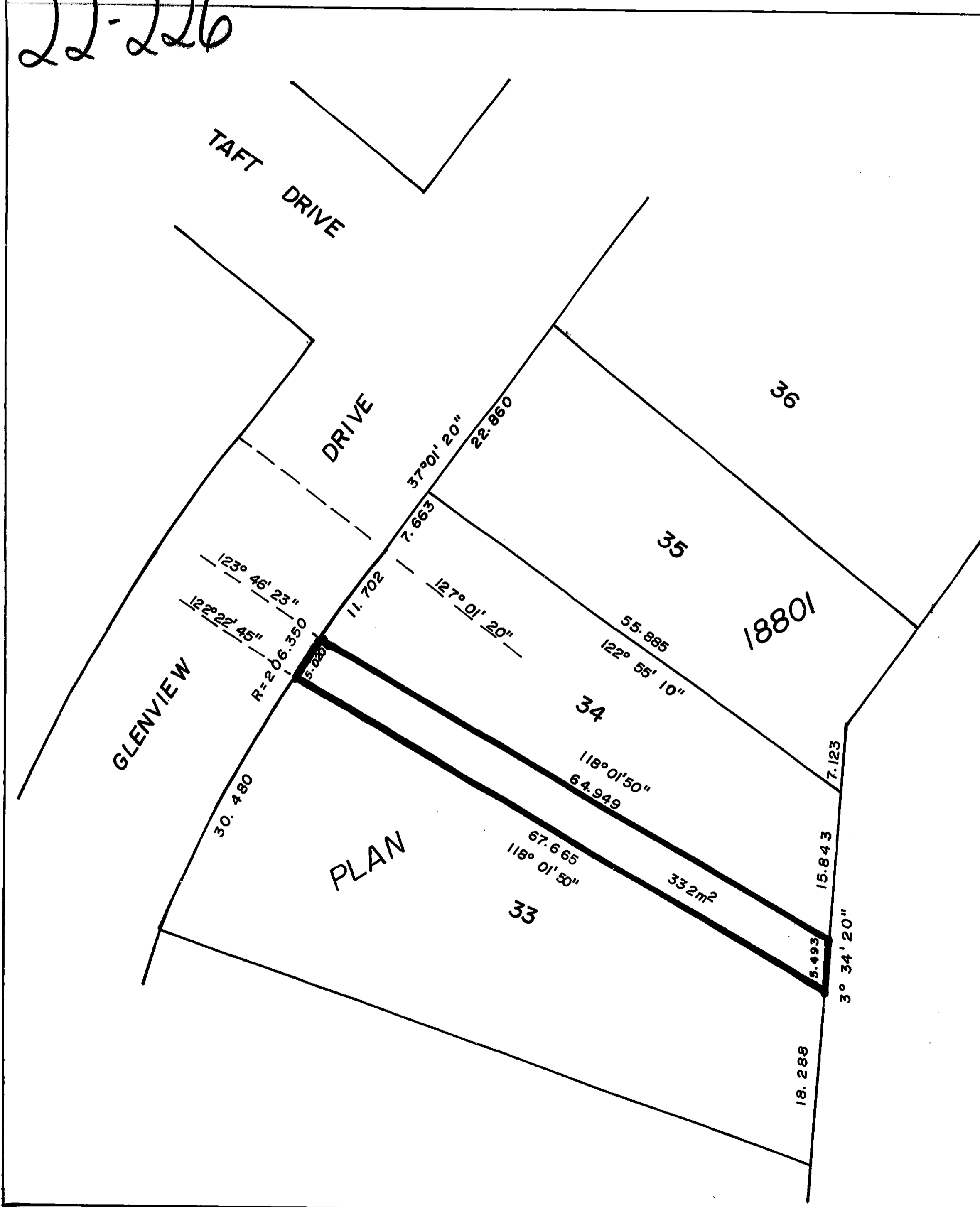
22-226

26650

PLAN NO. 26650

DEPOSITED IN THE LAND TITLE OFFICE AT PRINCE GEORGE THIS 22nd DAY OF December, 1980.

E. J. Rawen per fa
REGISTRAR



EXPLANATORY PLAN of
 STATUTORY RIGHT OF WAY in
 LOT 34, PLAN 18801, DISTRICT
 LOT 4047, CARIBOO DISTRICT.

SCALE 1:500
 cm = 5 m
 ALL DISTANCES ARE IN METRES.

THIS PLAN LIES WITHIN THE FRASER
 FORT GEORGE REGIONAL DISTRICT.

CERTIFIED CORRECT ACCORDING TO LAND TITLE
 OFFICE RECORDS THIS 18 DAY OF September, 1980.

Victor Bartell
 V. BARTELL, B. C. L. S.

BOOK	OF	REFERENCE
LOT 34	PLAN 18801	332m

McWILLIAM, WHYTE, GOBLE & ASSOCIATES B. C. LAND SURVEYORS PRINCE GEORGE KAMLOOPS SMITHERS SALMON ARM
REF. NO. 80179 D.L. 4047