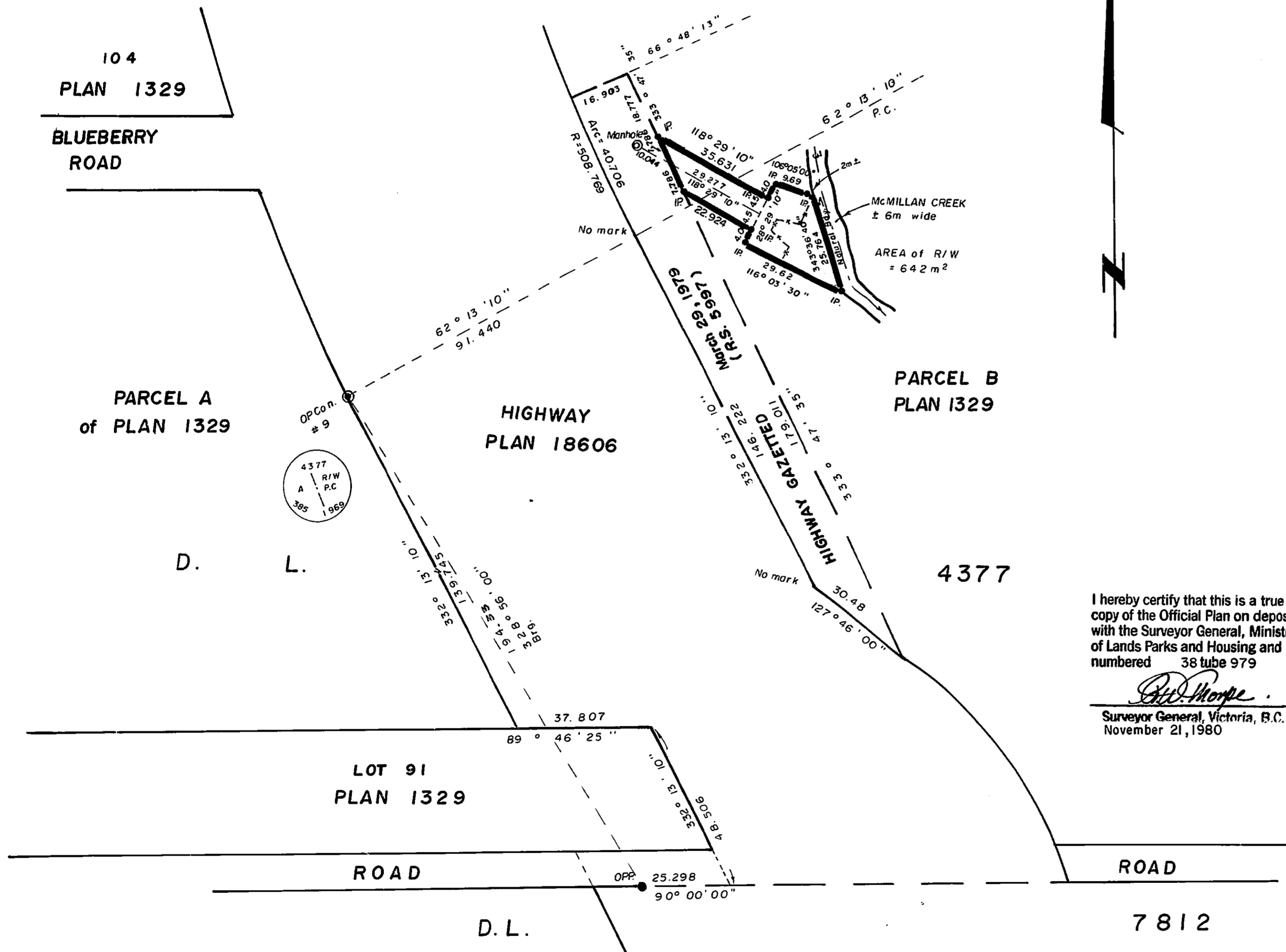


26-226

PLAN No. 26631
 DEPOSITED IN THE LAND TITLE OFFICE AT
 PRINCE GEORGE THIS 3-DAY-OF-DEC-1980

E. J. RAVEN
 REGISTRAR



I hereby certify that this is a true copy of the Official Plan on deposit with the Surveyor General, Ministry of Lands Parks and Housing and numbered 38 tube 979
V. Bartell
 Surveyor General, Victoria, B.C.
 November 21, 1980

CITY OF PRINCE GEORGE

PLAN of STATUTORY RIGHT-of-WAY
 IN PARCEL B of PLAN 1329,
 DISTRICT LOT 4377, CARIBOO DISTRICT.

20m 0 25 50m
 Scale: 1:1000
 ALL DISTANCES ARE IN METRES.

BEARINGS ARE ASTRONOMIC DERIVED FROM PLAN 18606.

- IP.....STANDARD IRON POST.
- PP.....STANDARD PIPE POST.
- ⊙ PCON....POST IN CONCRETE.
- O..... DENOTES "OLD"
- W..... DENOTES "WITNESS"

I, V. BARTELL, A BRITISH COLUMBIA LAND SURVEYOR, OF PRINCE GEORGE IN BRITISH COLUMBIA CERTIFY THAT I WAS PRESENT AT AND PERSONALLY SUPERINTENDED THE SURVEY REPRESENTED BY THIS PLAN AND THAT THE SURVEY AND PLAN ARE CORRECT. THE SAID SURVEY WAS COMPLETED ON THE 13 DAY OF March 1980.

V. Bartell
 V. BARTELL, B.C.L.S.

| BOOK OF REFERENCE | | |
|-------------------|----------------------|--------|
| DESCRIPTION | CENTRE LINE DISTANCE | AREA |
| RIGHT-of-WAY | 50 m. | 642 m² |

THIS PLAN LIES WITHIN THE FRASER FORT GEORGE REGIONAL DISTRICT.

McWILLIAM WHYTE GOBLE & ASSOCIATES,
 B.C. LAND SURVEYORS,
 PRINCE GEORGE - KAMLOOPS - SMITHERS.

REF. NO. 78155

D. L. 4377