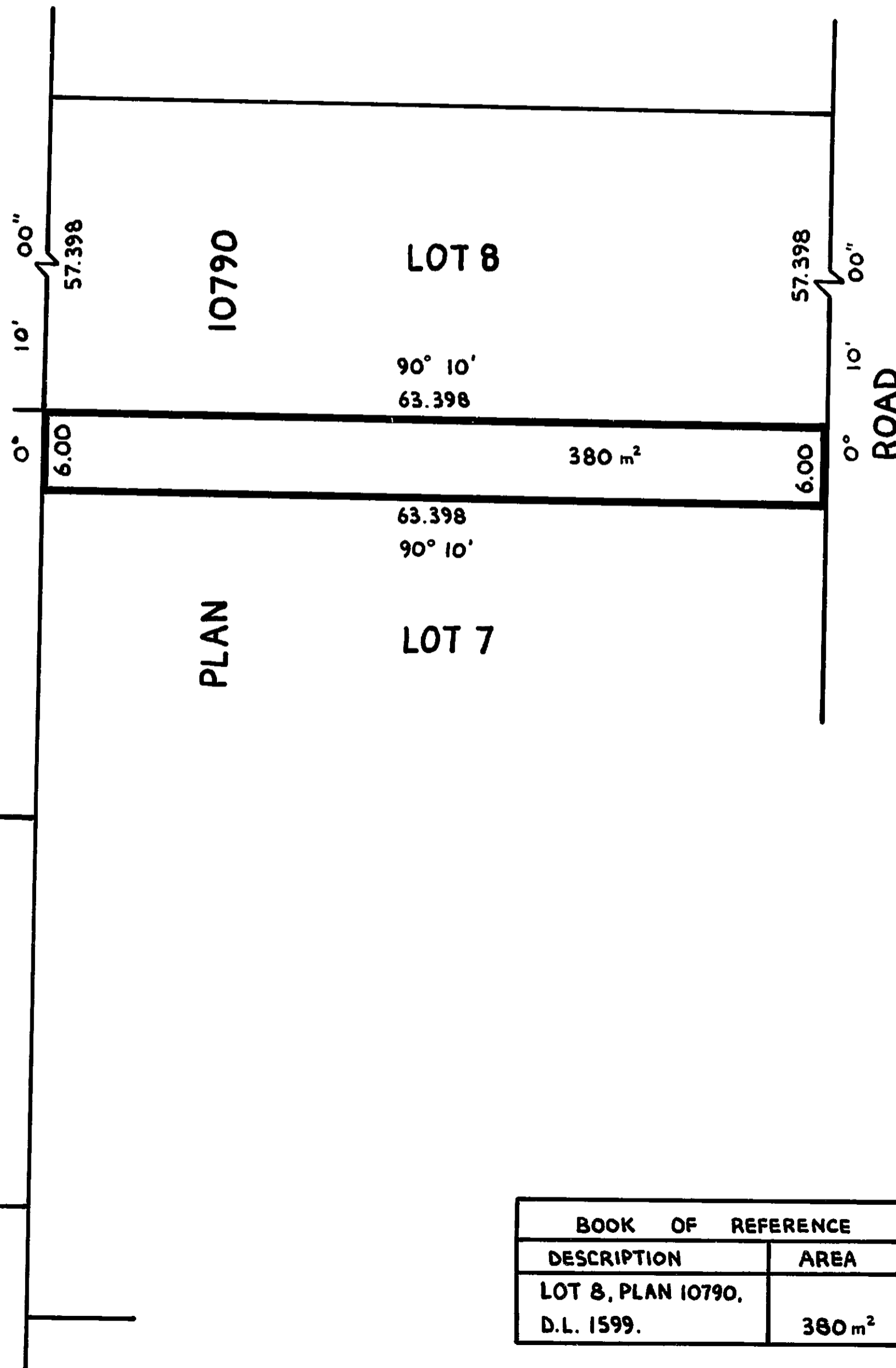


26

REM. EAST 1/2 OF
N.W. 1/4 D.L. 1599

LOT 106
PLAN 14373



BOOK OF REFERENCE	
DESCRIPTION	AREA
LOT 8, PLAN 10790, D.L. 1599.	380 m ²

PLAN NO. **26580**
DEPOSITED IN THE LAND TITLE OFFICE AT
PRINCE GEORGE THIS 15 DAY
OF November 1980.

E.J. Pearson per PR
REGISTRAR

EXPLANATORY PLAN OF
STATUTORY RIGHT-OF-WAY
IN LOT 8, PLAN 10790,
D.L. 1599, CARIBOO DISTRICT.

SCALE: 1:500
ALL DISTANCES ARE IN METRES.

CERTIFIED CORRECT

ACCORDING TO LAND TITLE OFFICE RECORDS
THIS 15 DAY OF November 1980.

V. Bartell
V. BARTELL, B.C.L.S.

THIS PLAN LIES WITHIN THE FRASER FORT GEORGE
REGIONAL DISTRICT.

McWILLIAM, WHYTE, GOBLE & ASSOCIATES,
B.C. LAND SURVEYORS,
PRINCE GEORGE - KAMLOOPS - SMITHERS - SALMON ARM

REF. NO. 80216-B