

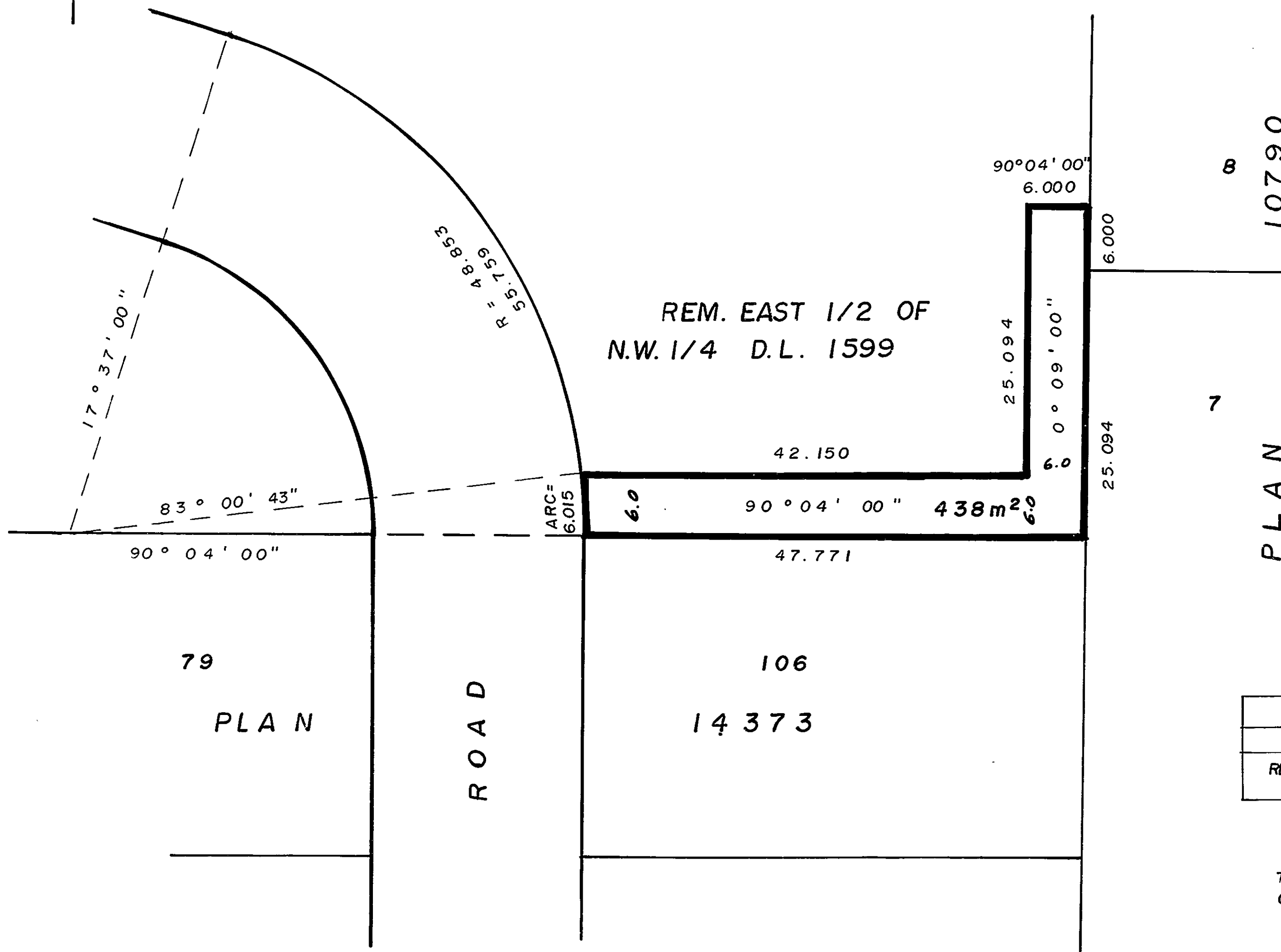
26

*STATUTORY*  
**EXPLANATORY PLAN OF RIGHT-OF-WAY  
 IN REMAINDER EAST 1/2 OF N.W. 1/4  
 D.L. 1599, CARIBOO DISTRICT.**

SCALE: 1:500  
 ALL DISTANCES ARE IN METRES.

**PLAN NO. 26544.**  
 DEPOSITED IN THE LAND TITLE OFFICE AT  
 PRINCE GEORGE THIS 6<sup>th</sup> DAY OF November 1980.

*E. J. Raven*  
 REGISTRAR



PLAN 10790  
7

CERTIFIED CORRECT  
 ACCORDING TO LAND TITLE OFFICE RECORDS  
 THIS 4<sup>th</sup> DAY OF NOVEMBER, 1980.

*V. Bartell*  
 V. BARTELL B.C.L.S.

BOOK OF REFERENCE	
DESCRIPTION	AREA
REM. E. 1/2 of N.W. 1/4 D.L. 1599.	438 m <sup>2</sup>

THIS PLAN LIES WITHIN THE FRASER FORT  
 GEORGE REGIONAL DISTRICT.

Mc WILLIAM WHYTE GOBLE & ASSOCIATES,  
 B.C. LAND SURVEYORS,  
 PRINCE GEORGE - KAMLOOPS - SMITHERS - SALMON ARM.

REF. NO. 80216 D.L. 1599