

26-226

REFERENCE PLAN OF EASEMENT  
WITHIN LOT 33, PLAN 19732,  
D.L. 2101, CARIBOO DISTRICT.

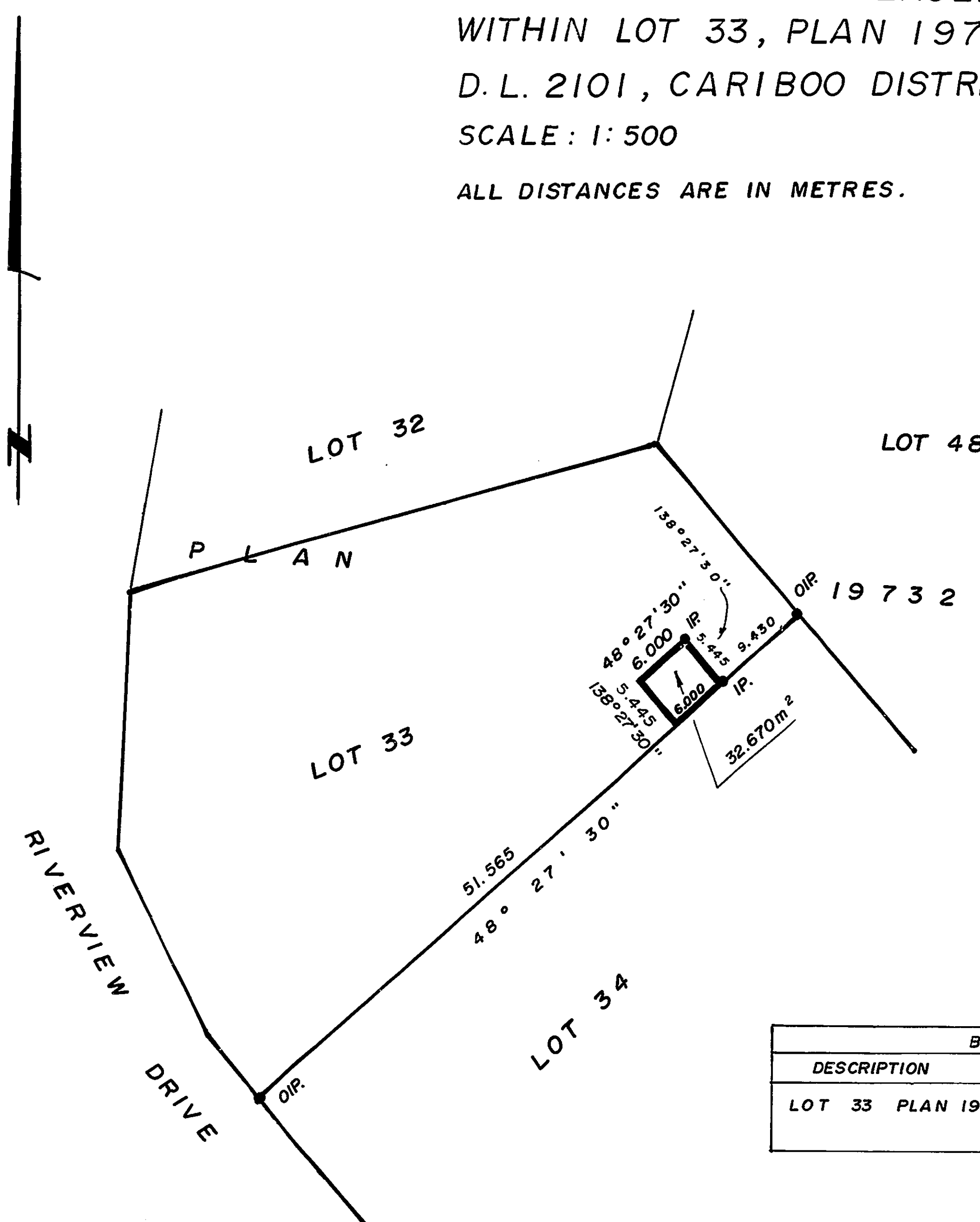
SCALE: 1:500

ALL DISTANCES ARE IN METRES.

PLAN NO. 26539

DEPOSITED IN THE LAND TITLE OFFICE  
AT PRINCE GEORGE THIS --- DAY OF --- 1980.

*E. J. Raven*  
REGISTRAR



BEARINGS ARE ASTRONOMIC DERIVED FROM  
PLAN 19732.

- IP. .... STANDARD IRON POST.
- ..... DENOTES "OLD"

I DALE KEOWN A BRITISH COLUMBIA LAND SURVEYOR  
OF PRINCE GEORGE IN BRITISH COLUMBIA CERTIFY  
THAT I WAS PRESENT AT AND PERSONALLY  
SUPERINTENDED THE SURVEY REPRESENTED BY  
THIS PLAN AND THAT THE SURVEY AND  
PLAN ARE CORRECT. THE SAID SURVEY WAS  
COMPLETED ON THE 3<sup>rd</sup> DAY OF OCTOBER, 1980.

*Dale Keown*  
DALE KEOWN, B.C.L.S.

BOOK OF REFERENCE	
DESCRIPTION	AREA
LOT 33 PLAN 19732	32.670 m <sup>2</sup>

THIS PLAN LIES WITHIN THE FRASER FORT  
GEORGE REGIONAL DISTRICT.

Mc WILLIAM WHYTE GOBLE & ASSOCIATES,  
B.C. LAND SURVEYORS,  
PRINCE GEORGE-KAMLOOPS-SMITHERS-SALMON ARM  
REF. NO. 80187. (D.L. 2101)