

PLAN OF SUBDIVISION OF PART OF
S.W. 1/4 DISTRICT LOT 4028 &
PART OF S.E. 1/4 DISTRICT LOT 4028
CARIBOO DISTRICT - BRITISH COLUMBIA

SCALE: 1" = 100'

NOTE: Bearings are astronomic, derived from the south boundary of Lot 81, Plan 24401.

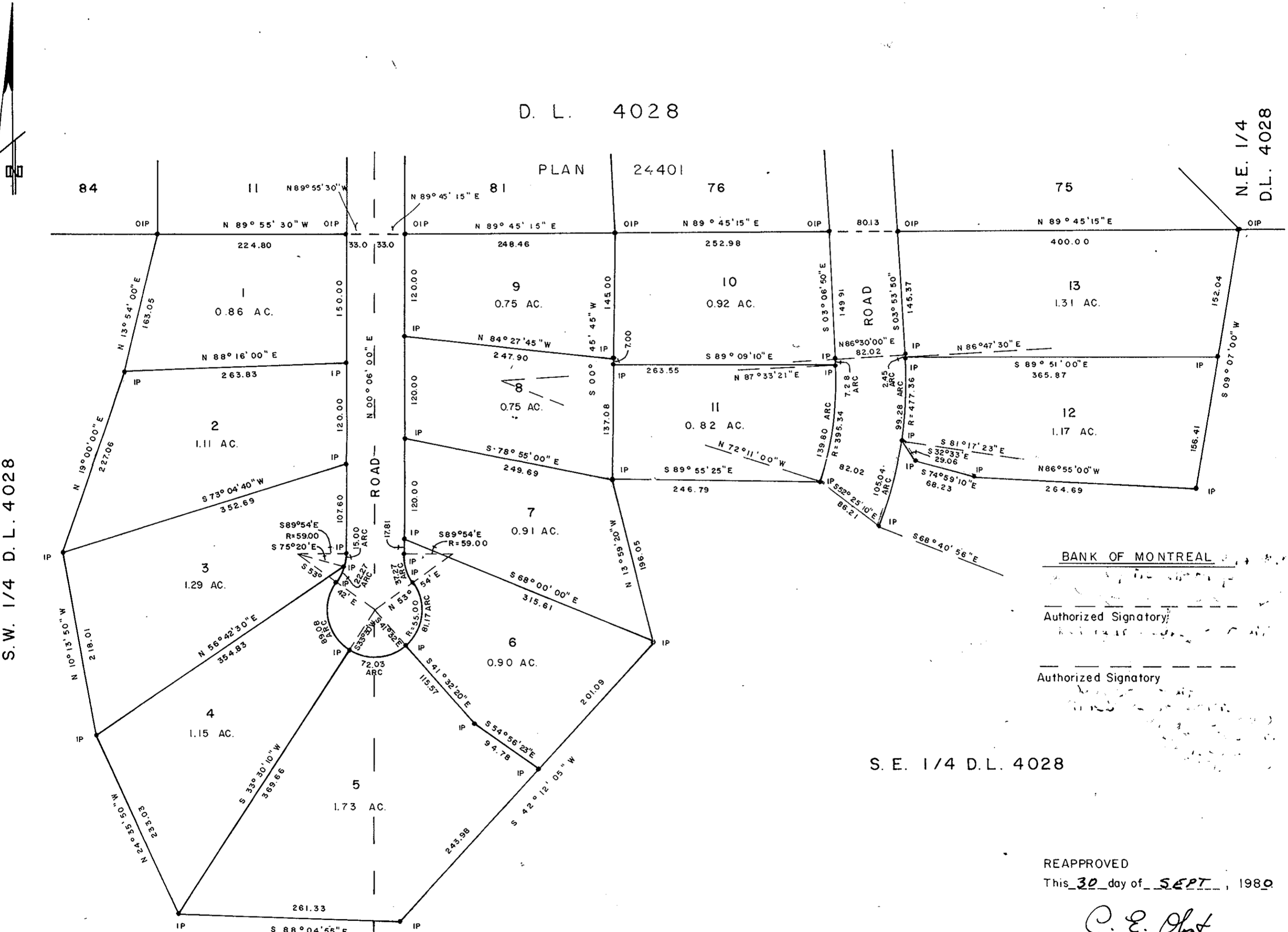
LEGEND: •OIP denotes an old iron pin found.
•IP denotes an iron pin set.

PLAN No. 26531

Deposited in the Land Registry Office at Prince George, B.C. this 3 day of Nov., 1980

Registrar

D. L. 4028



BANK OF MONTREAL

Authorized Signatory

Authorized Signatory

S. E. 1/4 D.L. 4028

REAPPROVED

This 30 day of SEPT, 1980

C. E. Olat
Approving Officer, City of Prince George

Approval of this subdivision plan is subject to the condition that there be concurrent registration of 1 right of way agreement as a first charge in each case, concerning municipal utility works which said agreements have been initialled by me for identification.

I, DONALD A. DUFFY of the City of Prince George, a British Columbia Land Surveyor, make oath and say that I was present at and did personally superintend the survey represented by this plan and that the survey and plan are correct. The said survey was completed on the 30 day of OCT, 1979

[Signature]
B.C.L.S.

Sworn before me this _____ day of _____, 19__

A Commissioner for taking Affidavits for British Columbia.

MONDIAL INVESTMENTS LTD.

Authorized Signatory

Authorized Signatory

ESTATE OF MARTIN SURREY CAINE

Executor ALFRED JOSEPH CAINE

Executor ROBERT GEOFFREY CAINE

Witness

Witness

MORTGAGEE

CAINE HOLDINGS LTD.

Authorized Signatory

Authorized Signatory

Approved under the Land Registry Act this 26 day of JUNE, 1980

C. E. Olat
Approving Officer, City of Prince George

This plan lies within the Fraser-Fort George Regional District.

W. D. USHER & ASSOCIATES
LAND SURVEYORS
PRINCE GEORGE - B.C.

JN 39 9901

4-7-80