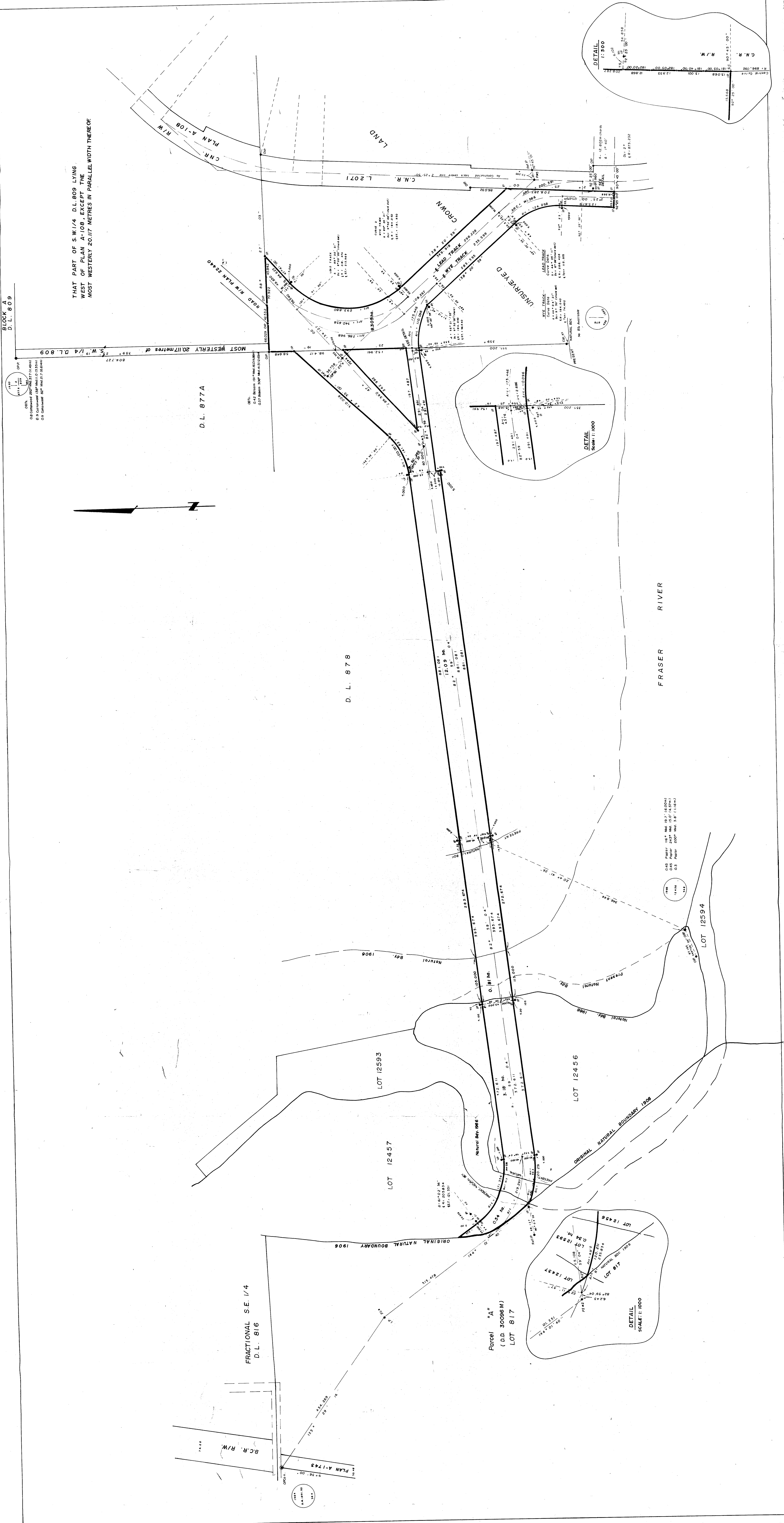
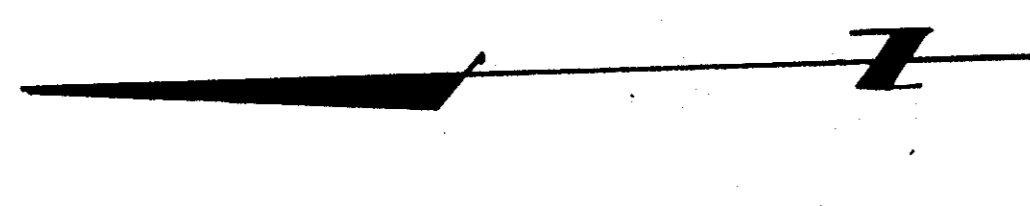


PLAN No 26510
 DEPOSITED IN THE LAND TITLE OFFICE AT VICTORIA
 PROVINCE B.C. THIS 11th DAY OF SEPTEMBER 1980

THAT PART OF S.W. 1/4 D.L. 809 LYING
 WEST OF PLAN A-108, EXCEPT THE
 MOST WESTERLY 20.17 METRES IN PARALLEL WIDTH THEREOF



I hereby certify that this is a true and correct copy of the original plan as shown to me by the Surveyor General, Victoria, B.C. on the 11th day of September 1980.

[Signature]
 Surveyor General, Victoria, B.C.
 October 31, 1980.

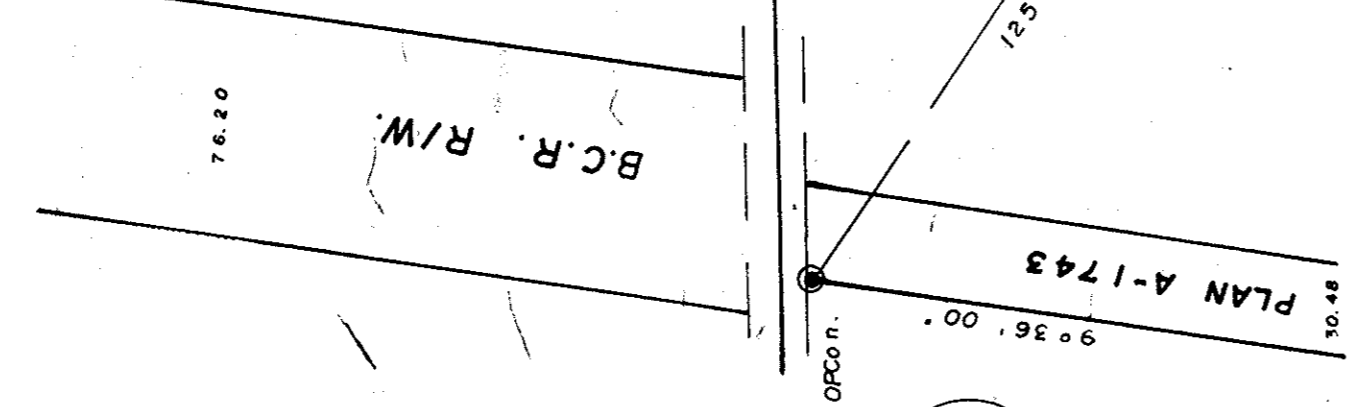
DESCRIPTION	AREA	PERCENTAGE	ACRES
LOT 12456	0.34	100%	0.82
LOT 12457	0.34	100%	0.82
UNSURVEYED CROWN LAND	8.155	100%	19.81
LOT 12593	3.124	100%	7.68

NORTHWOOD PULP and TIMBER LTD.
 PLAN OF STATUTORY RIGHT-OF-WAY
 IN DISTRICT LOTS 12457,
 12456, and 878, ACROSS THE
 BED OF THE FRASER RIVER AND
 UNSURVEYED CROWN LAND,
 CARIBOO DISTRICT.
 SCALE: 1:2500
 ALL DISTANCES ARE IN METRES.

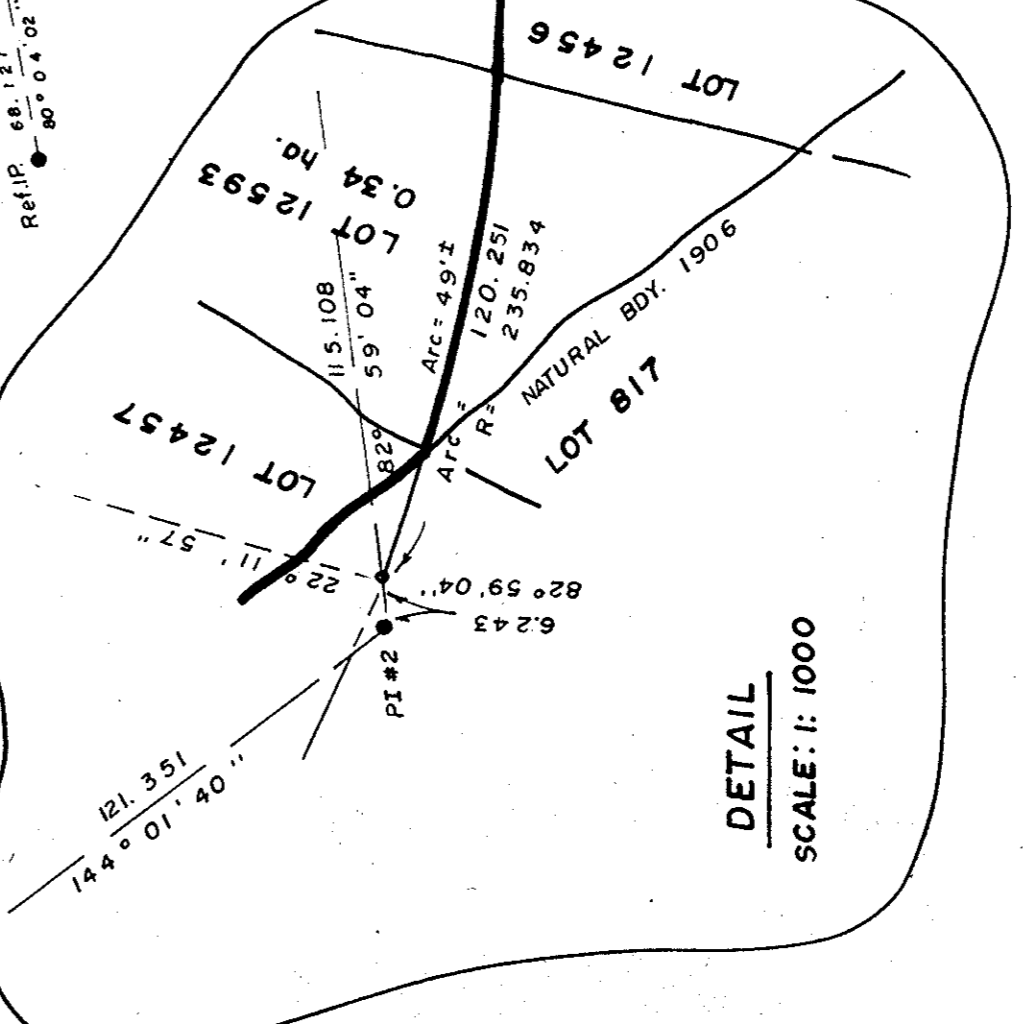
SEALING AND RECORDING INFORMATION FROM
 THE SURVEYOR GENERAL'S OFFICE
 THIS PLAN WAS REGISTERED IN THE
 LAND TITLE OFFICE AT VICTORIA
 PROVINCE B.C. ON THE 11th DAY OF
 SEPTEMBER 1980.
 S. KERR, R.S.L.

THIS PLAN LIES WITHIN THE PARALLEL FOOT
 OF THE FRASER RIVER DISTRICT
 GEORGE REYNOLDS DISTRICT
 REF. NO. 79212
 D.L. 878

FRACTIONAL S.E. 1/4
 D.L. 816



Parcel "A"
 (O.D. 30096 M)
 LOT 817



1:200
 1:1000

FRASER RIVER

D.L. 878

D.L. 877A

BLOCK A
 D.L. 809

1:200
 1:1000