

PLOTTED  
(JL)

REFERENCE PLAN OF CONSOLIDATION OF  
 PARCEL D (60376 M), BLOCK 309 &  
 LOT B (75927 M), BLOCK 287, PLAN 1268  
 DISTRICT LOT 343  
 CARIBOO DISTRICT — BRITISH COLUMBIA

SCALE: 1 : 500

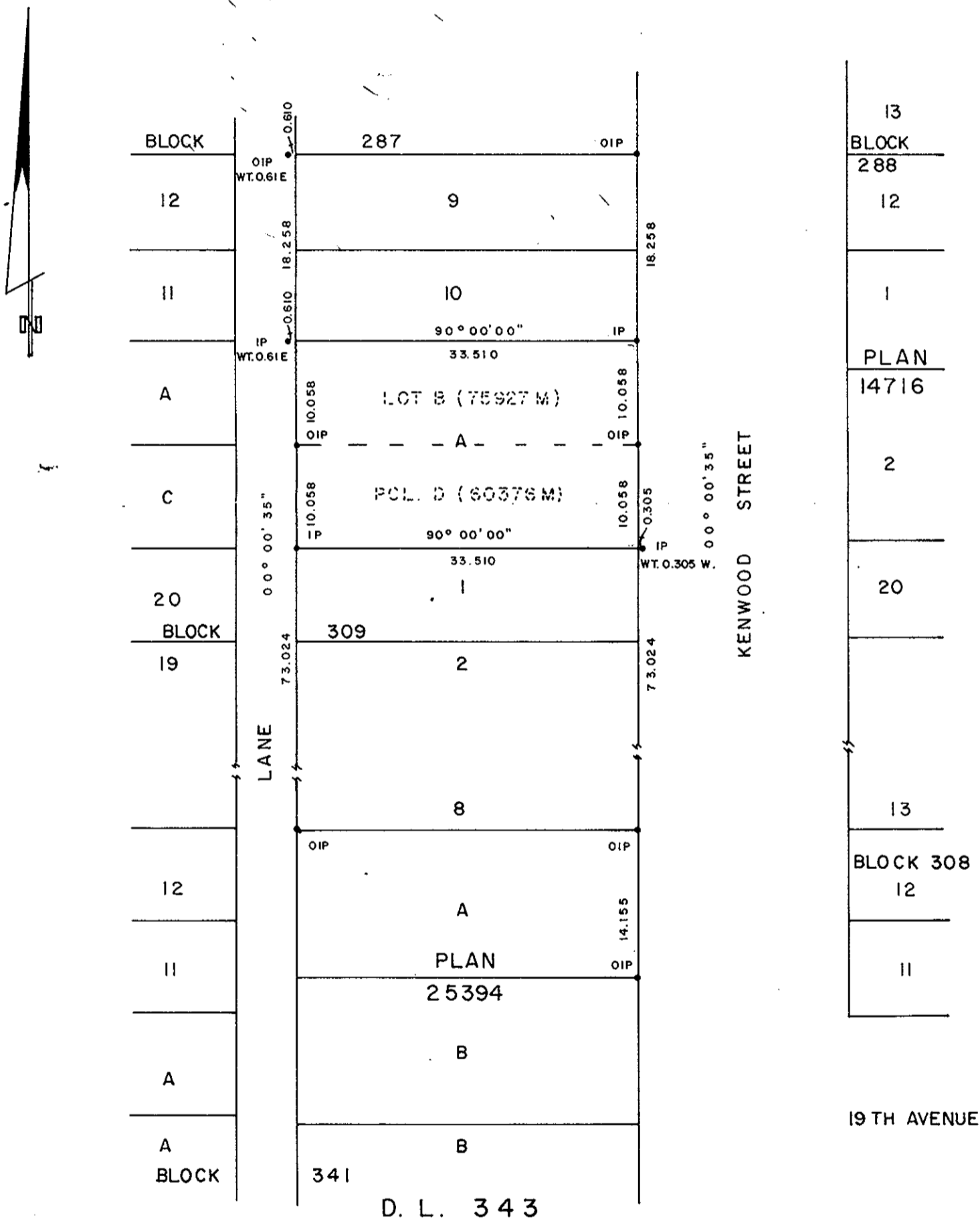
NOTE: Bearings are astronomic, derived from the west  
 boundary of Kenwood Street as shown on Plan 25394.

LEGEND: • OIP denotes an old iron pin found.  
 • IP denotes an iron pin set.  
 WT denotes witness.

PLAN No **26455**

Deposited in the Land Title  
 Office at Prince George, B.C. this  
 15<sup>th</sup> day of October, 1930.

— "E. J. Raven" per: *gr*  
 Registrar



I, R. L. JOHNS, a British Columbia Land Surveyor, of Prince George, in British Columbia, certify that I was present at and did personally superintend the survey represented by this plan, and that the survey and plan are correct. The survey was completed on the 8<sup>th</sup> day of OCT, 1930.

*R. L. Johns*  
 Authorized Signatory

W. RUSHTON CONSTRUCTION LTD.

*[Signature]*  
 Authorized Signatory

Authorized Signatory

20  
 BLOCK 342

This plan lies within the Fraser-Fort George Regional District.

W. D. USHER & ASSOCIATES  
 LAND SURVEYORS  
 PRINCE GEORGE — B.C.