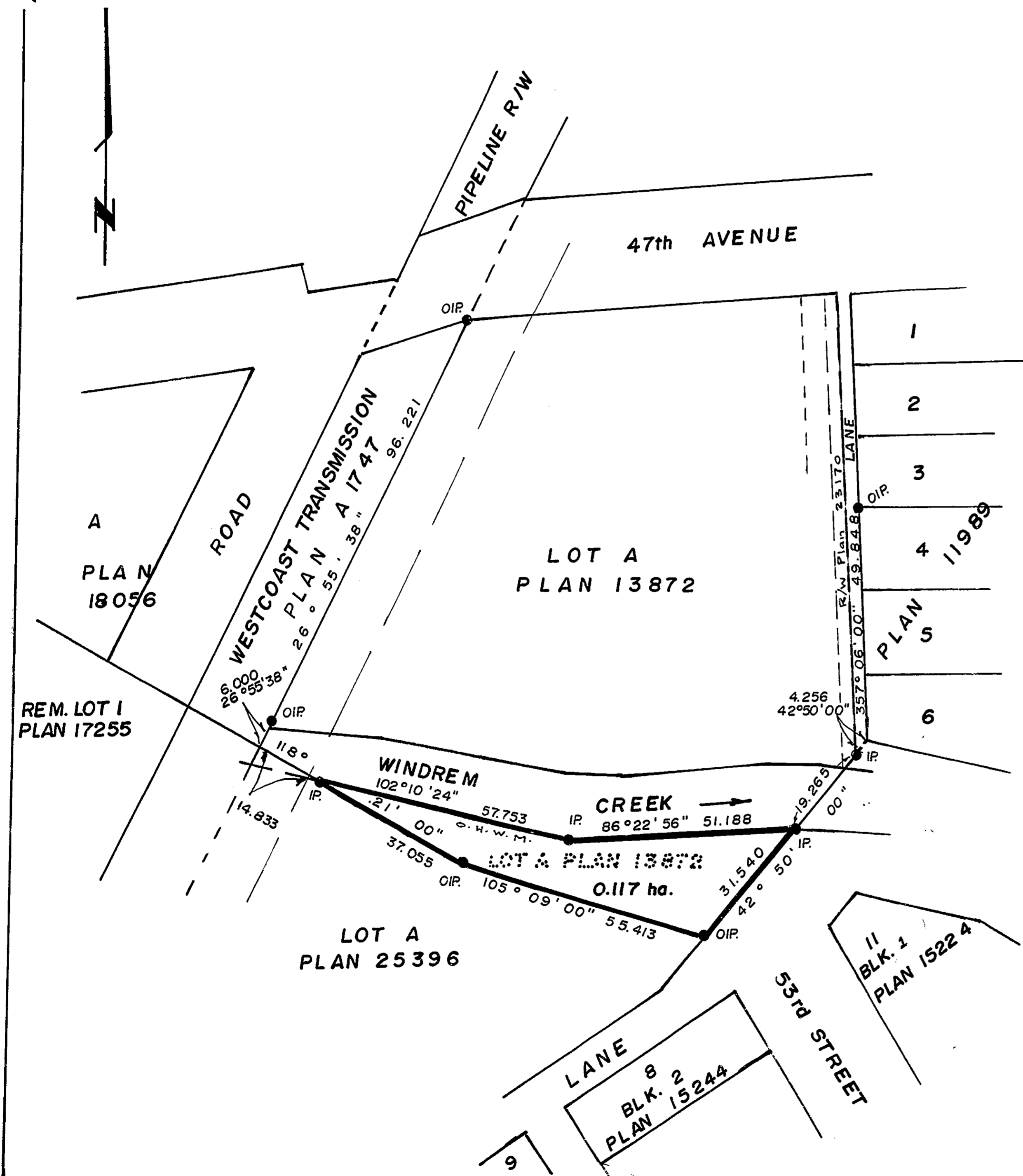


27-PL

PLAN NO. **26432**

DEPOSITED IN THE LAND TITLE OFFICE AT
PRINCE GEORGE THIS 8th DAY OF October 1980.

E. J. Raven per fr.
REGISTRAR



PLAN OF STATUTORY RIGHT-OF-WAY
IN LOT A, PLAN 13872, D.L. 398,
PEACE RIVER DISTRICT.

SCALE: 1:1000

ALL DISTANCES ARE IN METRES.

BEARINGS ARE ASTRONOMIC DERIVED
FROM PLAN 25396.

● IP... STANDARD IRON POST.
○..... DENOTES OLD.

I A. DANILUCK A BRITISH COLUMBIA LAND
SURVEYOR OF PRINCE GEORGE IN BRITISH COLUMBIA
CERTIFY THAT I WAS PRESENT AT AND PERSONALLY
SUPERINTENDED THE SURVEY REPRESENTED BY
THIS PLAN AND THAT THE SURVEY AND PLAN ARE
CORRECT. THE SAID SURVEY WAS COMPLETED
ON THE 5th DAY OF August 1980

A. Daniluck
A. DANILUCK, B.C.L.S.

BOOK OF REFERENCE	
DESCRIPTION	AREA
LOT A, PLAN 13872	0.1170 HA.

THIS PLAN LIES WITHIN THE PEACE
RIVER LIARD REGIONAL DISTRICT.

A. DANILUCK,
B.C. LAND SURVEYOR
PRINCE GEORGE - CHETWYND.

FILE NO. 80-55

D 6-10-80