

PLOTTED (KC)

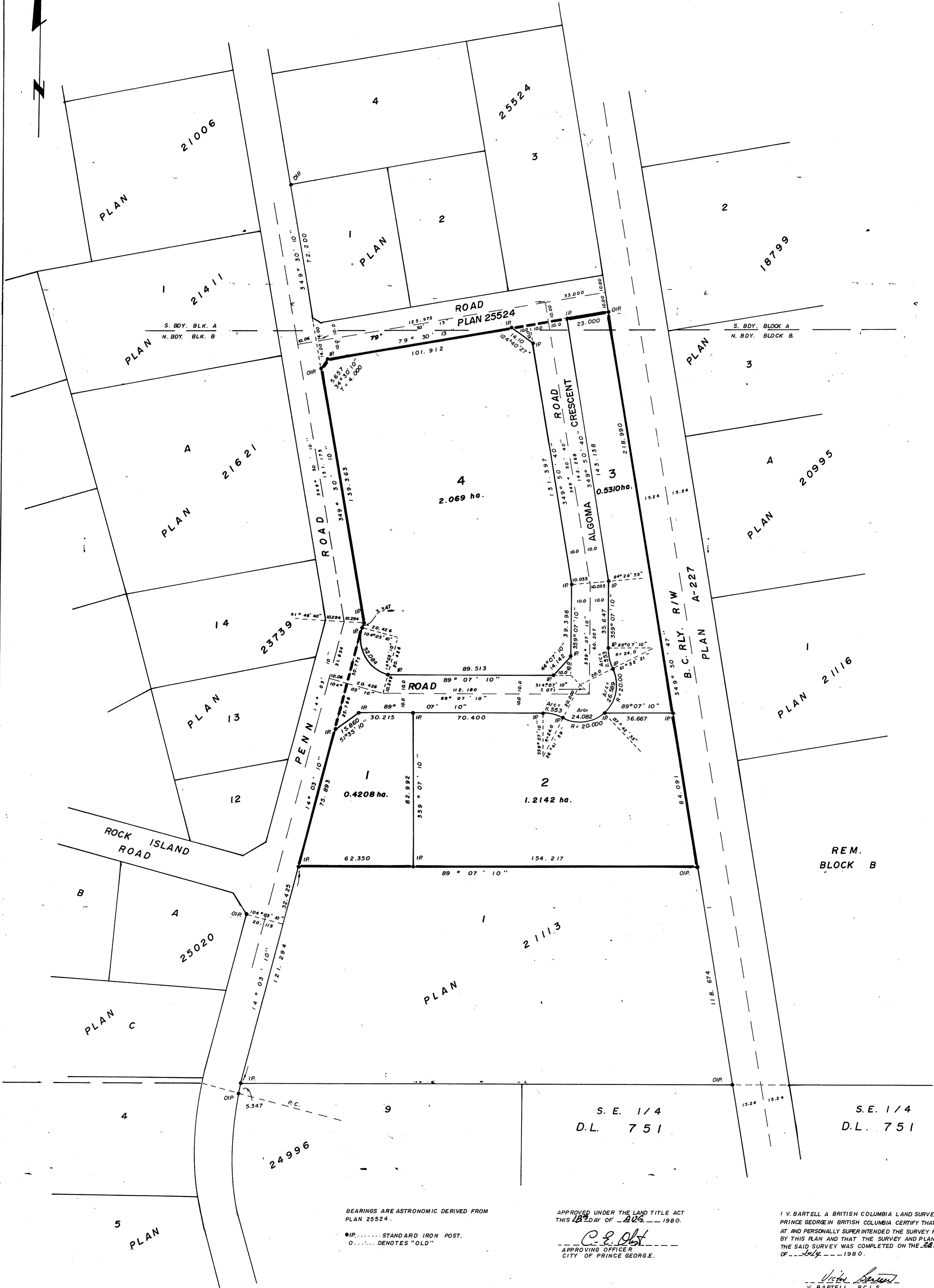
PLAN OF SUBDIVISION OF  
PART OF REMAINDER OF BLOCKS A and B,  
DISTRICT LOT 751, CARIBOO DISTRICT.

PLAN NO. 26430  
DEPOSITED IN THE LAND TITLE OFFICE AT  
PRINCE GEORGE THIS 8. DAY OF DEC. 1980.

SCALE: 1:1000

ALL DISTANCES ARE IN METRES.

*E.S. Raven*  
REGISTRAR



BEARINGS ARE ASTRONOMIC DERIVED FROM  
PLAN 25524.

● IP ..... STANDARD IRON POST.  
○ ..... DENOTES "OLD"

APPROVED UNDER THE LAND TITLE ACT  
THIS 12<sup>th</sup> DAY OF AUG. 1980.

*C. E. Platt*  
APPROVING OFFICER  
CITY OF PRINCE GEORGE.

I V. BARTELL A BRITISH COLUMBIA LAND SURVEYOR OF  
PRINCE GEORGE IN BRITISH COLUMBIA CERTIFY THAT I WAS PRESENT  
AT AND PERSONALLY SUPERINTENDED THE SURVEY REPRESENTED  
BY THIS PLAN AND THAT THE SURVEY AND PLAN ARE CORRECT.  
THE SAID SURVEY WAS COMPLETED ON THE 22<sup>nd</sup> DAY  
OF JULY 1980.

*V. Bartell*  
V. BARTELL, B.C.L.S.

THE SEAL OF THE CITY OF PRINCE GEORGE  
WAS AFFIXED HERETO IN THE PRESENCE OF:

MAYOR *E.W. Mercer*

CITY CLERK *A.W. Buchanan*

THIS PLAN LIES WITHIN THE FRASER FORT  
GEORGE REGIONAL DISTRICT.

McWILLIAM, WHYTE, GOBLE, & ASSOCIATES,  
B.C. LAND SURVEYORS,  
PRINCE GEORGE - KAMLOOPS - SMITHERS - SALMON ARM.

REF. NO. 80046 (D.L. 751)