

PLAN OF SUBDIVISION OF  
 LOTS 13, 14 & 15, BLOCK 36,  
 PLAN 646, DISTRICT LOT 1429  
 CARIBOO DISTRICT - BRITISH COLUMBIA.

SCALE: 1:500

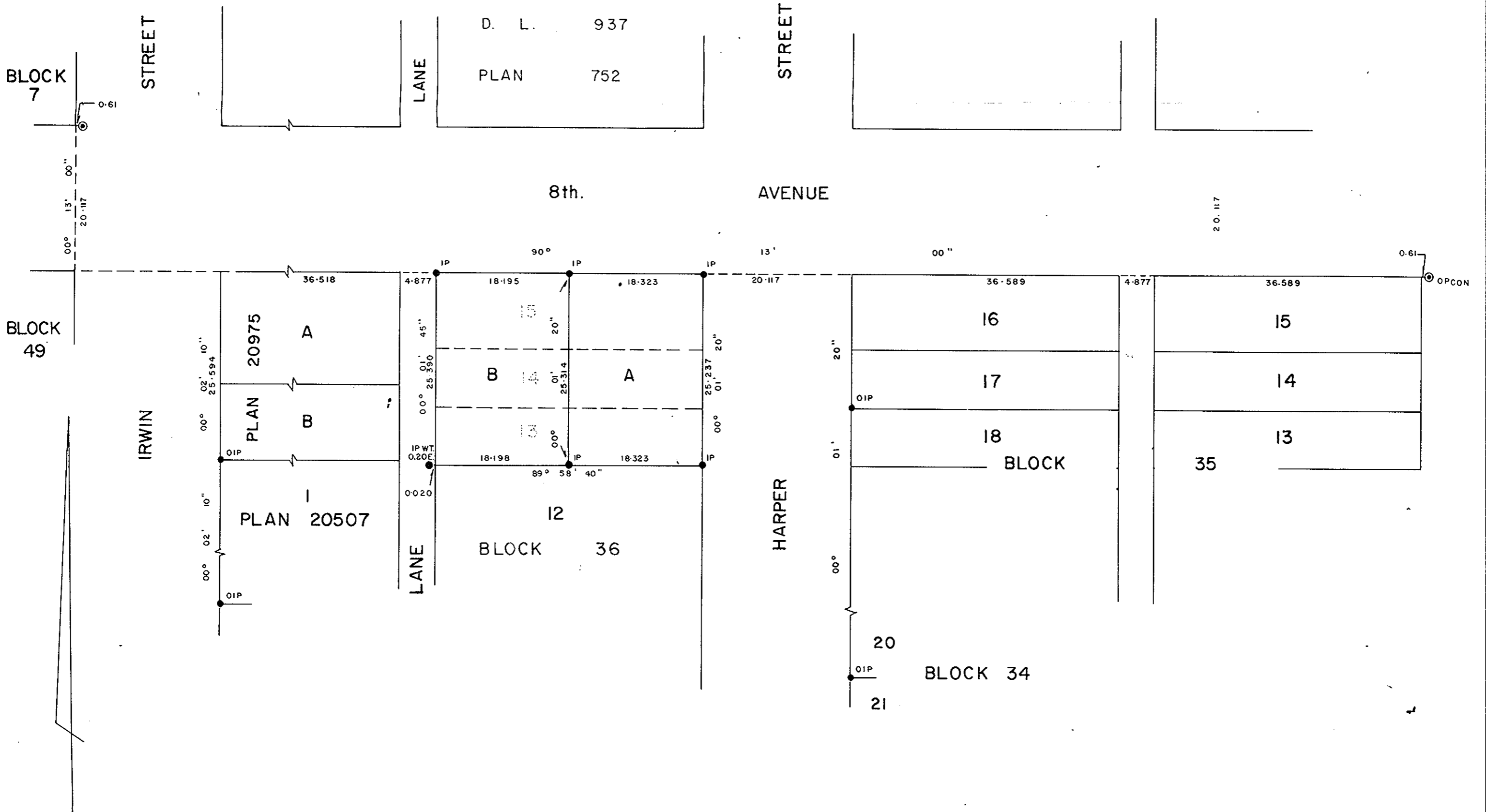
NOTE, BEARINGS ARE ASTRONOMIC, DERIVED FROM  
 THE SOUTH BOUNDARY OF 8th AVENUE, AS SHOWN  
 ON PLAN 19686.

- LEGEND
- OIP denotes an old iron pin found
  - IP denotes an iron pin set
  - ⊙ OPCON denotes an old concrete post found.
  - WT denotes witness

PLOTTED (HM)

PLAN No 26393  
 Deposited in the Land Title  
 Office at Prince George, B.C. this  
20 day of September, 1980.

E. J. RAVEN  
 Registrar



I, DONALD A. DUFFY, of the City of Prince George,  
 a British Columbia Land Surveyor, make oath and say  
 that I was present at and did personally superintend  
 the survey represented by this plan and that the survey  
 and plan are correct. The said survey was completed  
 on the 18th day of August, 1980.

*[Signature]*  
 B.C.L.S.

Sworn before me this \_\_\_\_\_  
 day of \_\_\_\_\_, 19\_\_

A Commissioner for taking Affidavits  
 for British Columbia.

Owner \_\_\_\_\_

Witness \_\_\_\_\_

Approved under the Land Title Act  
 this 18 day of AUG, 1980

*[Signature]*  
 Approving Officer, City of Prince George.

This plan lies within the Fraser-Fort George  
 Regional District.