

NOTED (UN)

PLAN OF SUBDIVISION OF
LOT 163 & PART OF LOT 162, PLAN 9107
DISTRICT LOT 938
CARIBOO DISTRICT—BRITISH COLUMBIA

SCALE: 1 : 500

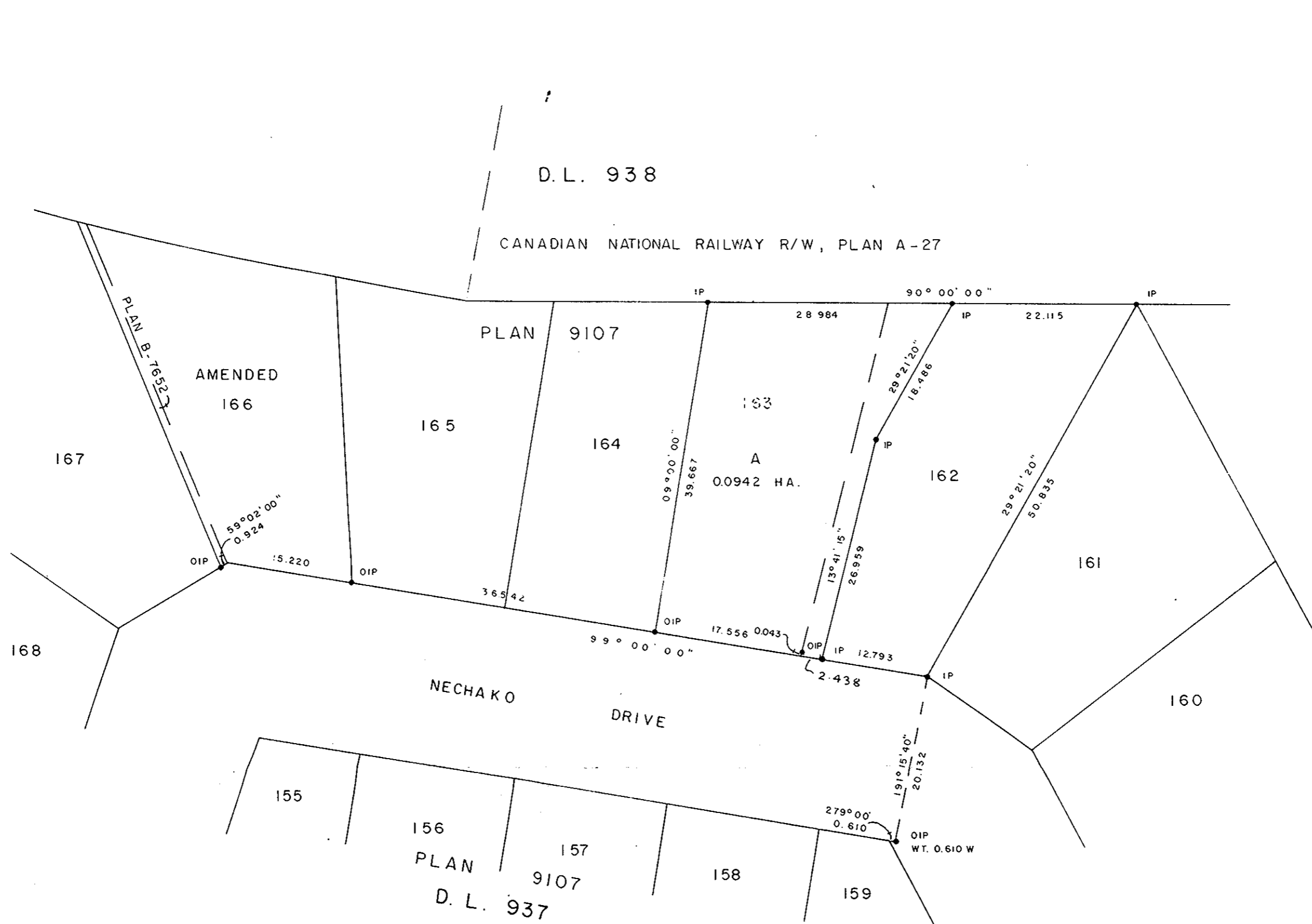
NOTE: Bearings are astronomic, derived from the north
boundary of Nechako Drive, Plan 9107.

LEGEND: • OIP denotes an old iron pin found.
• IP denotes an iron pin set.
• WT denotes witness.

PLAN N^o 26388

Deposited in the Land Title
Office at Prince George, B.C. this
24 day of SEPT., 1980.

E. J. RAVEN
Registrar



I, DONALD A. DUFFY, a British Columbia Land Surveyor, of Prince George, in British Columbia, certify that I was present at and did personally superintend the survey represented by this plan, and that the survey and plan are correct. The survey was completed on the 24 day of APRIL, 1980.

Owner Hans Beck
Witness R. [Signature]
302 260 Hwy 130
1st floor

ROYAL TRUST CORPORATION
OF CANADA

Bob Horton
Authorized Signatory

Beauregard
Authorized Signatory

Approved under the Land Title Act
this 29 day of APRIL, 1980

C. E. Olet
Approving Officer, City of Prince George

This plan lies within the Fraser-Fort George
Regional District.

WD USHER & ASSOCIATES
LAND SURVEYORS
PRINCE GEORGE — B.C.
ML 40 11652