

26-226

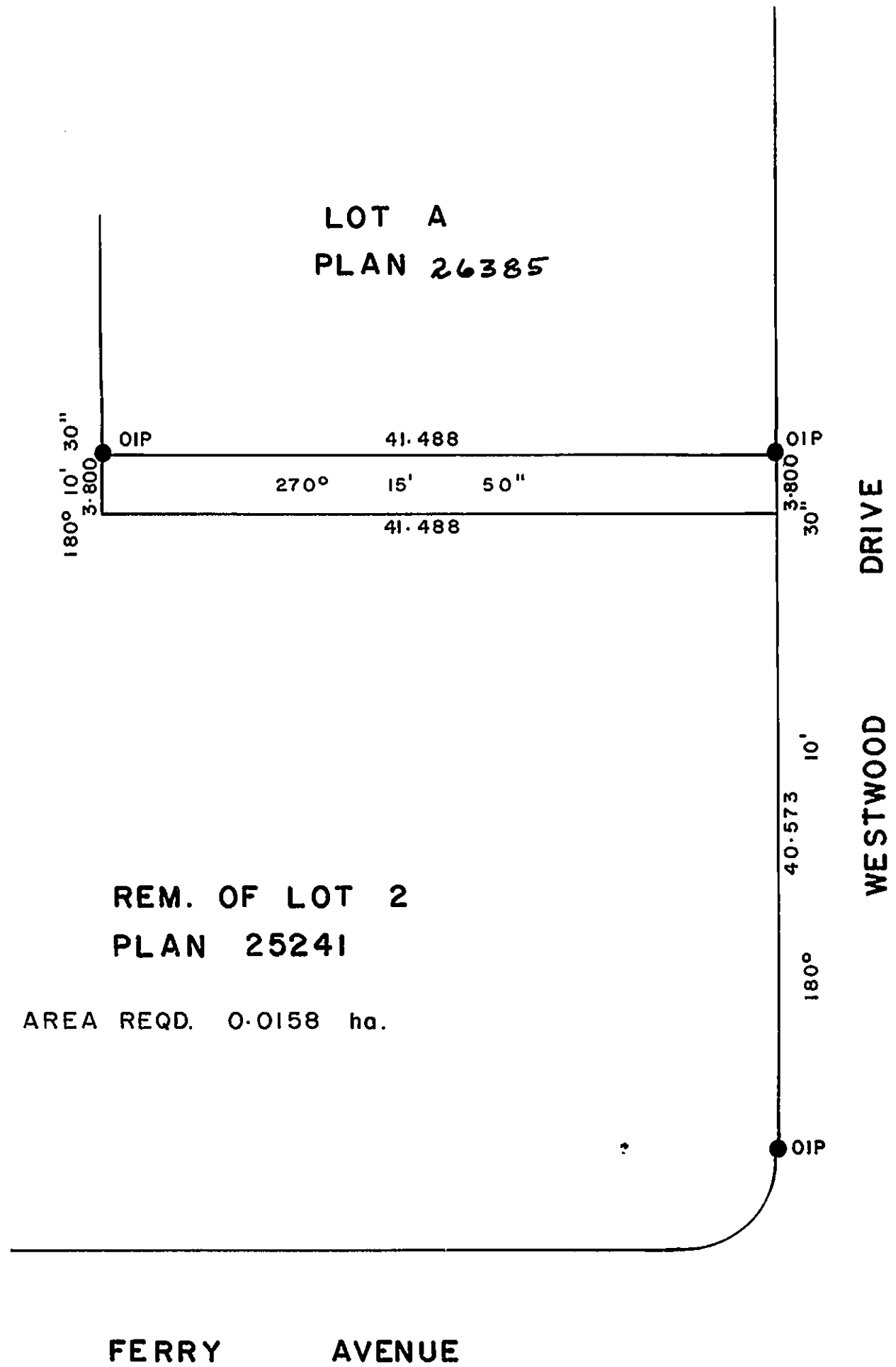
26387

REFERENCE PLAN OF EASEMENT THROUGH  
LOT 2 PLAN 25241  
DISTRICT LOT 8178  
CARIBOO DISTRICT B.C.

SCALE, 1:500  
BEARINGS ARE ASTRONOMIC, DERIVED FROM  
THE EAST BOUNDARY OF LOT 2, PLAN 25241  
LEGEND  
OIP DENOTES AN OLD IRON PIN FOUND

PLAN N<sup>o</sup> **26387**  
Deposited in the Land Title  
Office at Prince George, B.C. this  
20<sup>th</sup> day of September, 1980.

E. J. Ravenhill Registrar



I, DONALD A. DUFFY, a British Columbia Land Surveyor, of Prince George, in British Columbia, certify that I was present at and did personally superintend the survey represented by this plan, and that the survey and plan are correct. The survey was completed on the 15 day of Aug, 1980.

This plan lies within the Fraser- Fort George Regional District.

W. D. USHER & ASSOCIATES  
LAND SURVEYORS  
PRINCE GEORGE — B.C.