

26-226

26386

PLAN OF EASEMENT THROUGH  
LOT A PLAN 26385  
DISTRICT LOT 8178  
CARIBOO DISTRICT B.C.

PLAN No 26386

Deposited in the Land Title  
Office at Prince George, B.C. this  
29<sup>th</sup> day of September, 1980.

SCALE, 1:500

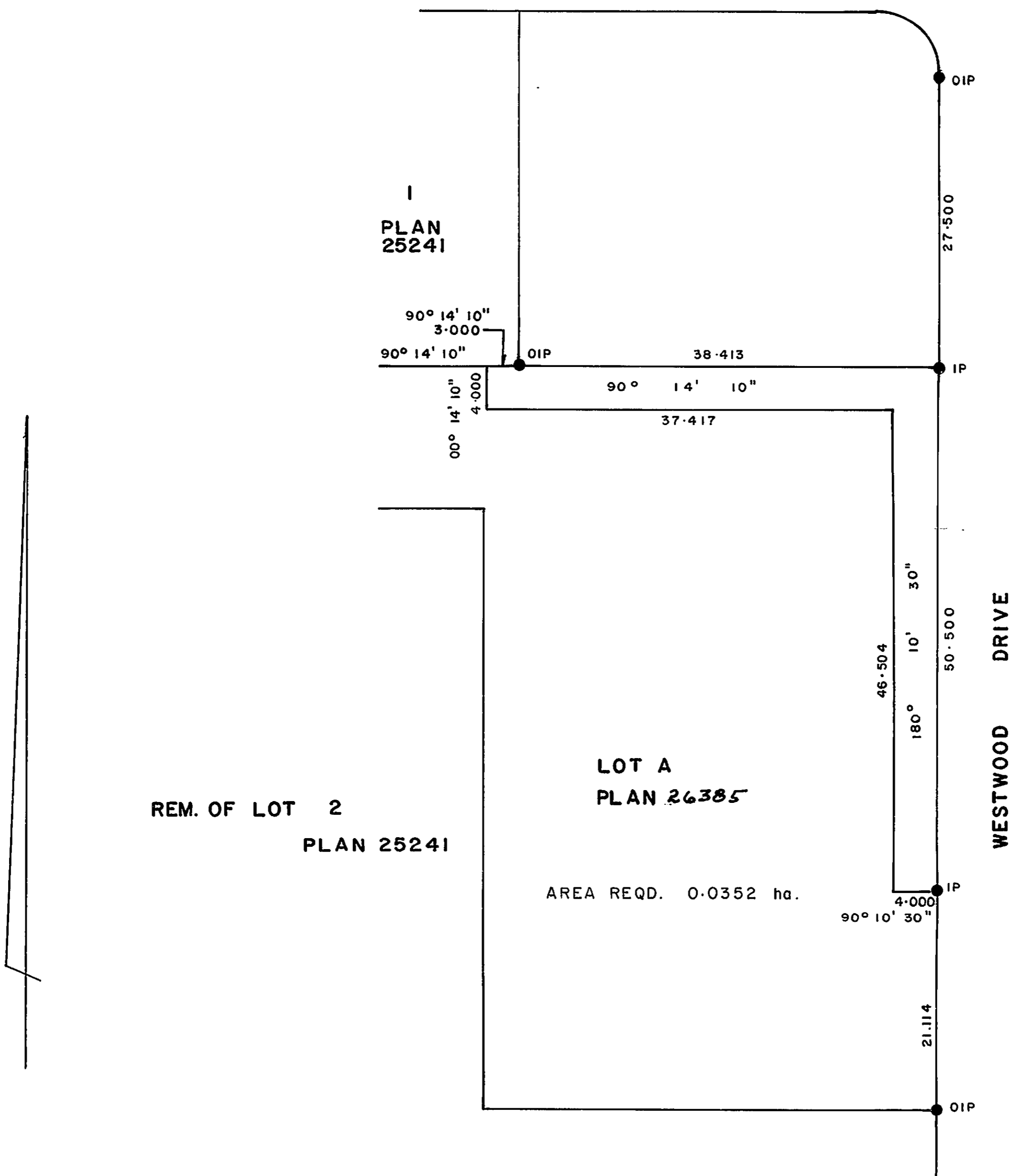
BEARINGS ARE ASTRONOMIC, DERIVED FROM  
THE EAST BOUNDARY OF LOT A, PLAN 26385

LEGEND

- OIP DENOTES AN OLD IRON PIN FOUND
- IP DENOTES AN IRON PIN SET

*E. J. Rowan* per *J. J.*  
Registrar

CHERRY AVENUE



REM. OF LOT 2  
PLAN 25241

LOT A  
PLAN 26385

AREA REQD. 0.0352 ha.

I, DONALD A. DUFFY, a British Columbia Land Surveyor, of Prince George, in British Columbia, certify that I was present at and did personally superintend the survey represented by this plan, and that the survey and plan are correct. The survey was completed on the 15 day of Aug. 1980.

This plan lies within the Fraser- Fort George Regional District.

W. D. USHER & ASSOCIATES  
LAND SURVEYORS  
PRINCE GEORGE — B.C.