

Plotted (FQ)(GQ)

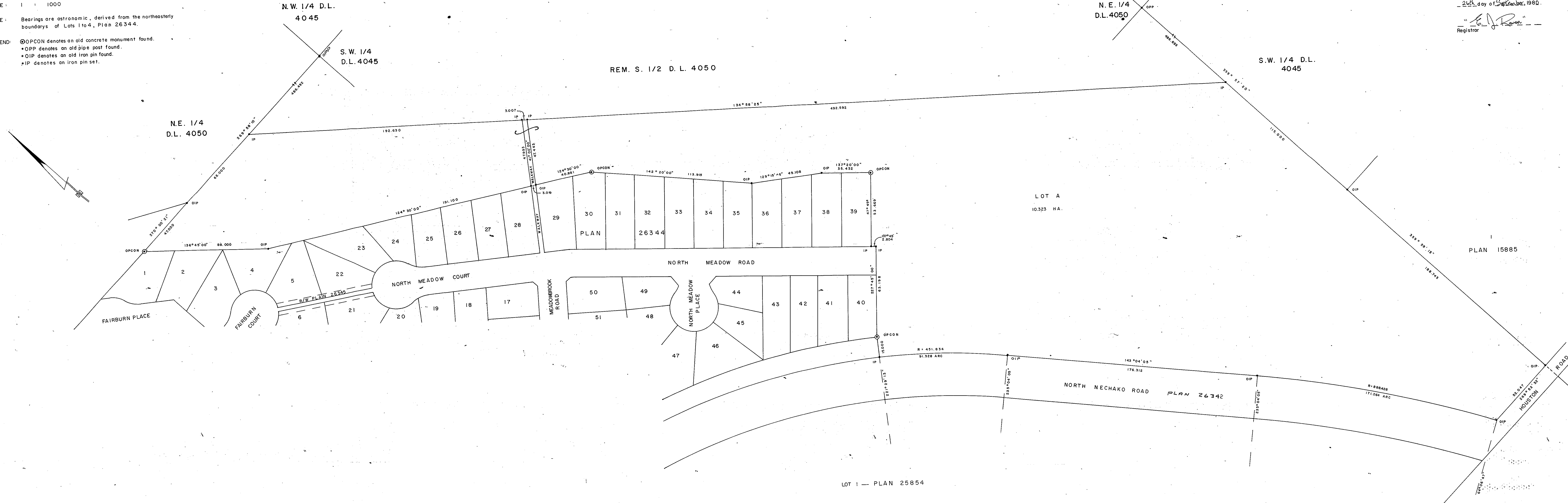
PLAN OF SUBDIVISION OF PART OF
REMAINDER S. 1/2 OF DISTRICT LOT 4050
CARIBOO DISTRICT - BRITISH COLUMBIA

SCALE: 1" = 100'

NOTE: Bearings are astronomic, derived from the northeasterly
boundaries of Lots 1 to 4, Plan 26344.

LEGEND: \odot OPCON denotes an old concrete monument found.
•OPP denotes an old pipe post found.
•OIP denotes an old iron pin found.
•IP denotes an iron pin set.

PLAN No. 26384
Deposited in the Land Title
Office of Prince George, B.C. this
24th day of September, 1980.
Registrar



I, DONALD A. DUFFY, a British Columbia Land
Surveyor, of Prince George, in British Columbia,
certify that I was present at and did personally
superintend the survey represented by this plan,
and that the survey and plan are correct. The
survey was completed on the 2nd day of Sept.
1980.

[Signature]

HEIGHTS LAND DEVELOPMENT CO. LTD.

[Signature]
Authorized Signatory

[Signature]
Authorized Signatory
F. O. Brady

Approved under the Land Title Act
this 17th day of Sept., 1980.

[Signature]
Approving Officer, City of Prince George

This plan lies within the Fraser-Fort George
Regional District.

W. D. O'NEIL & ASSOCIATES
LAND SURVEYORS
PRINCE GEORGE - B.C.
11523