

PLAN OF SUBDIVISION OF
 LOTS 29, 30 & 31, PLAN 15556
 DISTRICT LOT 2433
 CARIBOO DISTRICT—BRITISH COLUMBIA

SCALE: 1 : 1000

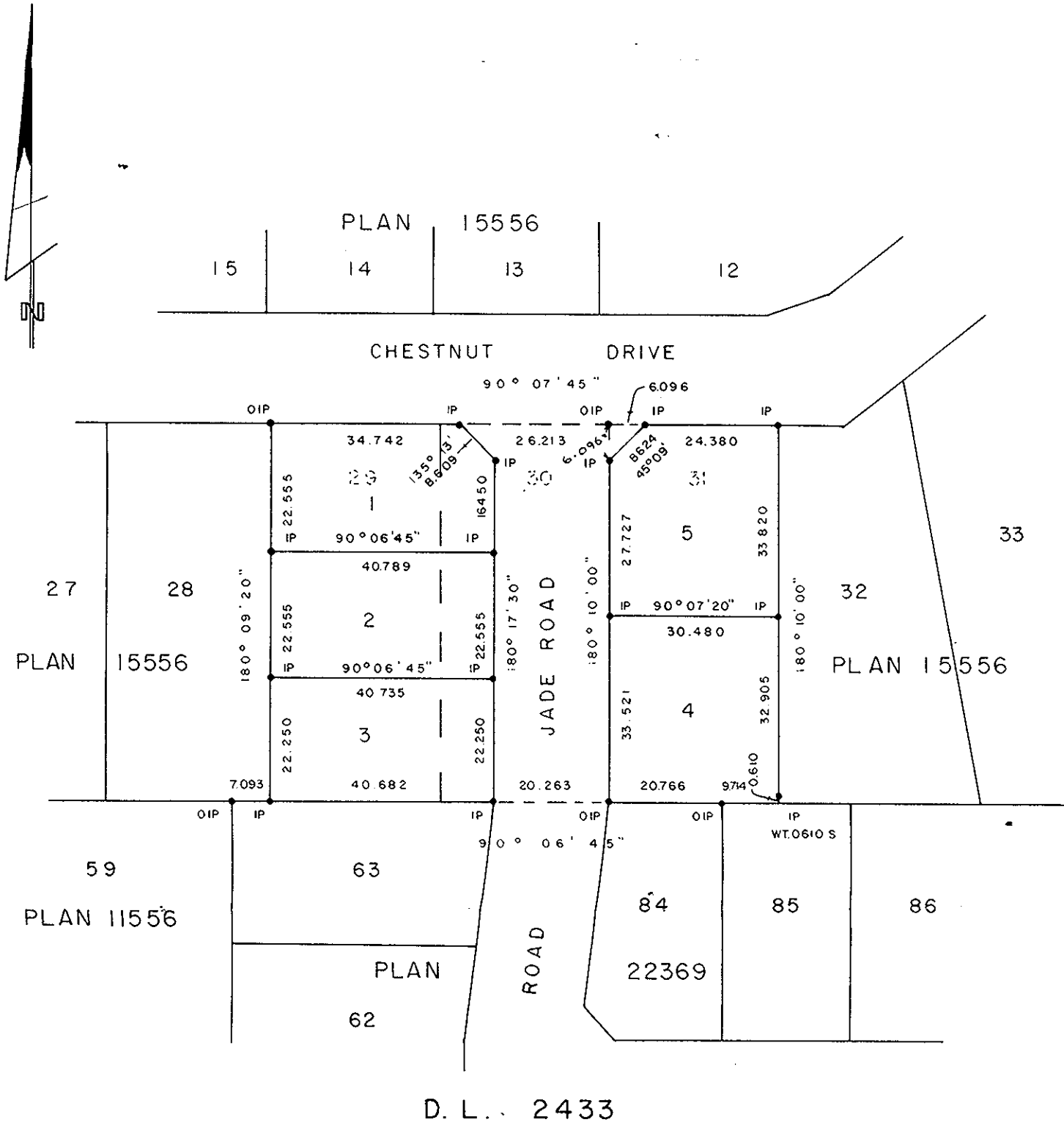
NOTE: Bearings are astronomic, derived from the north boundary of Lot 84, Plan 22369.

LEGEND: • OIP denotes an old iron pin found.
 • IP denotes an iron pin set.
 WT denotes witness.

PLAN N^o 26351

Deposited in the Land Title Office at Prince George, B.C. this 11 day of Sept., 1980.

E. J. Raw
 Registrar



D. L. 2433

GLENVIEW ESTATES LTD.

Authorized Signatory

Approved under the Land Title Act
 this 18 day of AUG, 1980

Approving Officer, City of Prince George

I, DONALD A. DUFFY, a British Columbia Land Surveyor, of Prince George, in British Columbia, certify that I was present at and did personally superintend the survey represented by this plan, and that the survey and plan are correct. The survey was completed on the 20 day of Aug., 1979.

This plan lies within the Fraser- Fort George Regional District

W. D. USHER & ASSOCIATES
 LAND SURVEYORS
 PRINCE GEORGE — B.C.
 LS 76 10591