

PLAN OF SUBDIVISION OF
 LOTS 4 & 9, PLAN 21915
 DISTRICT LOT 2433
 CARIBOO DISTRICT - BRITISH COLUMBIA

SCALE: 1 : 500

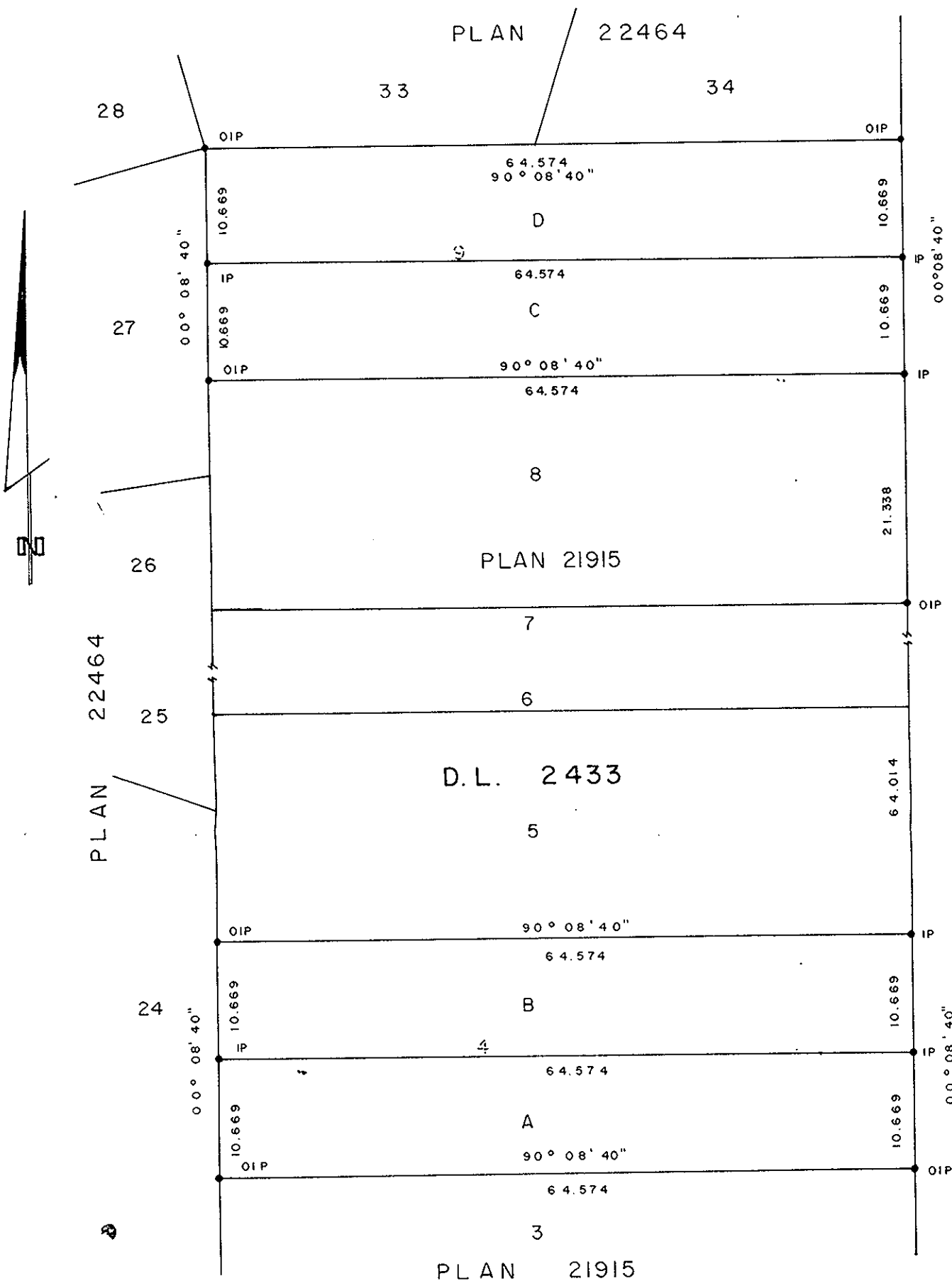
NOTE: Bearings are astronomic, derived from the
 north boundary of Lot 9, Plan 21915.

LEGEND: • OIP denotes an old iron pin found.
 • IP denotes an iron pin set.

PLAN N^o **26350**

Deposited in the Land Title
 Office at Prince George, B.C. this
11 day of SEPT., 1980.

F. J. RAVEN
 Registrar



BIDDLE HOLDINGS LTD.

 Authorized Signatory

 Authorized Signatory

Approved under the Land Title Act
 this 28 day of AUG., 1980

C. E. Olot
 Approving Officer, City of Prince George

This plan lies within the Fraser-Fort George
 Regional District.

I, DONALD A. DUFFY, a British Columbia Land
 Surveyor, of Prince George, in British Columbia,
 certify that I was present at and did personally
 superintend the survey represented by this plan,
 and that the survey and plan are correct. The
 survey was completed on the 1st day of August,
 1980.

BIDDLE - FEHR CONSTRUCTION LTD.

 Authorized Signatory

 Authorized Signatory

W. D USHER & ASSOCIATES
 LAND SURVEYORS
 PRINCE GEORGE - B.C.
 NK 4
 MS 65 11654