

Plotted (FQ)

REFERENCE PLAN TO ACCOMPANY  
BYLAW No 3602 OF THE CITY OF PRINCE GEORGE  
(SECTION 574 OF THE MUNICIPAL ACT)  
DIVERTING PORTIONS OF ROAD IN  
S. E. 1/4 DISTRICT LOT 4050  
CARIBOO DISTRICT — BRITISH COLUMBIA

SCALE: 1 : 1000

NOTE: Bearings are astronomic, derived from Polaris observations  
and are referred to the meridian through the east boundary  
of the S.W. 1/4 District Lot 4050.

Road to be dedicated is shown outlined in red.  
Road to be closed is shown cross-hatched.

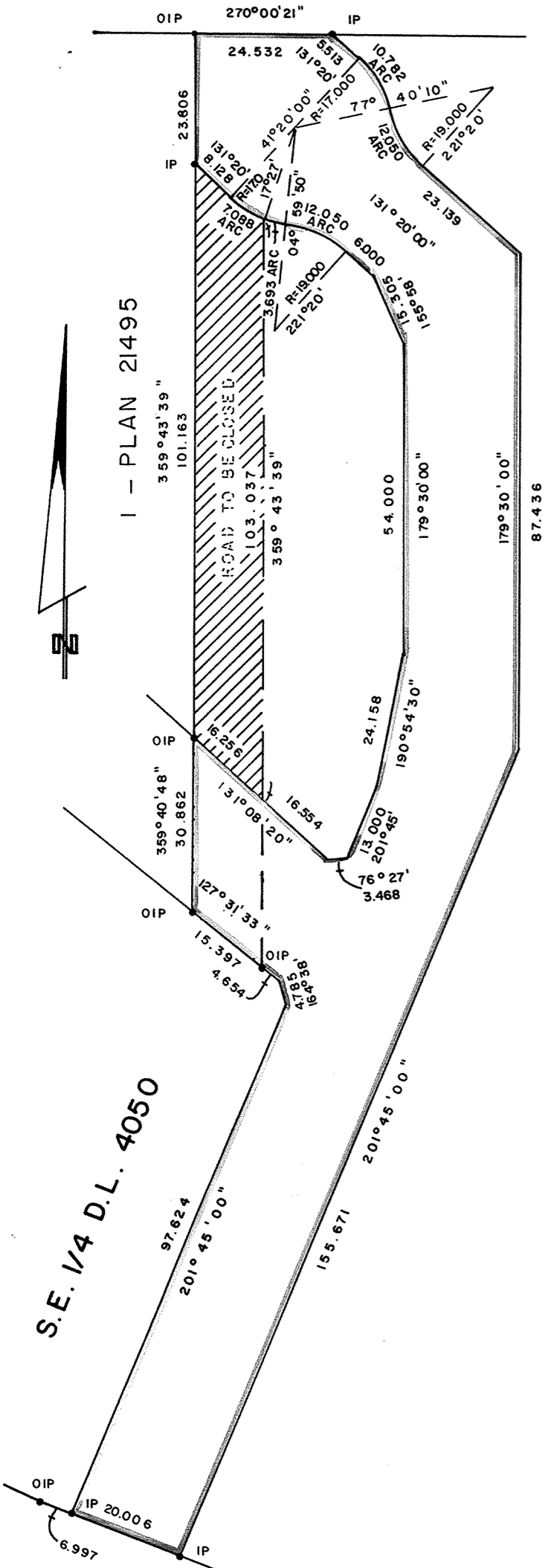
LEGEND: •OIP denotes an old iron pin found.  
•IP denotes an iron pin set.

PLAN No 26343

Deposited in the Land Title  
Office at Prince George, B.C. this  
9 day of Sept., 1980.

E. J. Ram  
Registrar

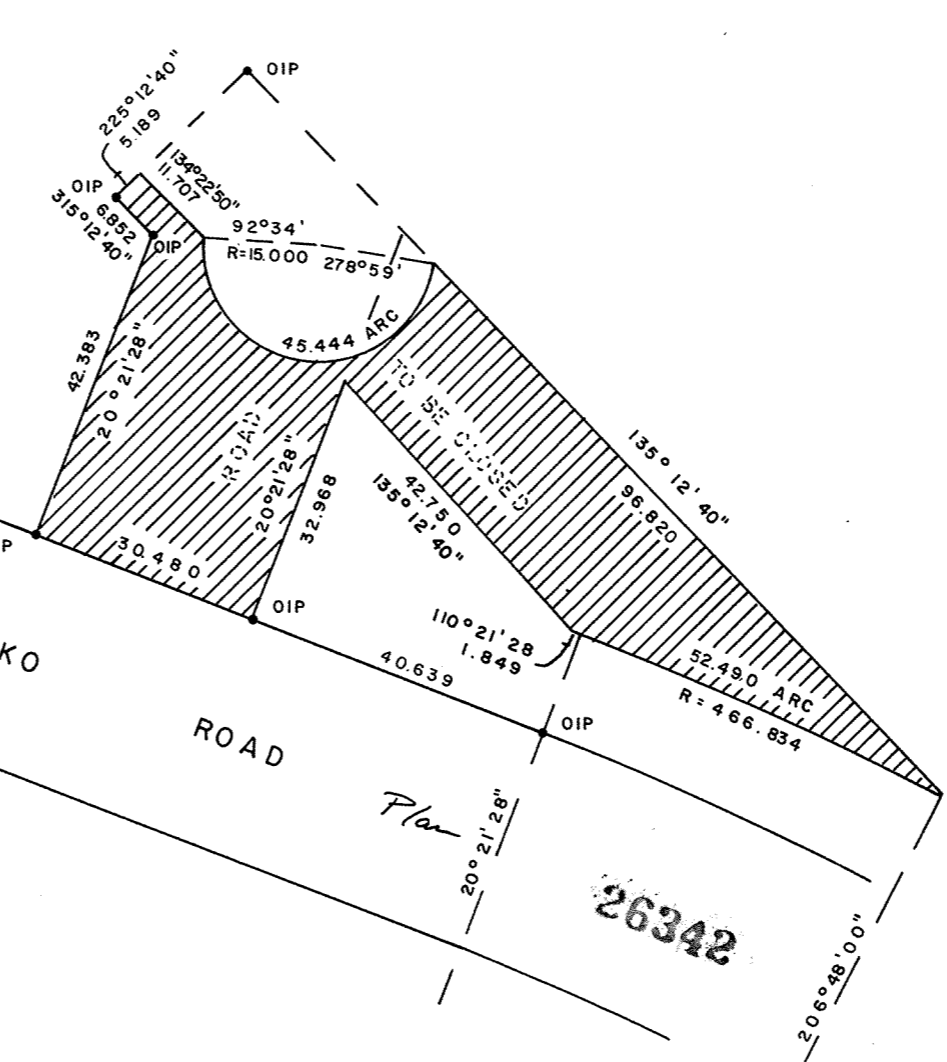
N.E. 1/4 D.L. 4050  
A  
PLAN 16145



SE. 1/4 D.L. 4050

S.E. 1/4 D.L. 4050

I, DONALD A. DUFFY, a British Columbia Land  
Surveyor, of Prince George, in British Columbia,  
certify that I was present at and did personally  
superintend the survey represented by this plan,  
and that the survey and plan are correct. The  
survey was completed on the 4th day of July,  
1980.



Approved under the Land Title Act  
this 22<sup>nd</sup> day of AUG., 1980.

C. E. Blot  
Approving Officer, City of Prince George

This plan lies within the Fraser-Fort George  
Regional District.

W.D. USHER & ASSOCIATES  
LAND SURVEYORS  
PRINCE GEORGE — B.C.  
11523 A