

4

3

N.E. 1/4 D.L. 4048

11.2 7.624 HA
11.1 MIL
1.1 7.624 HA

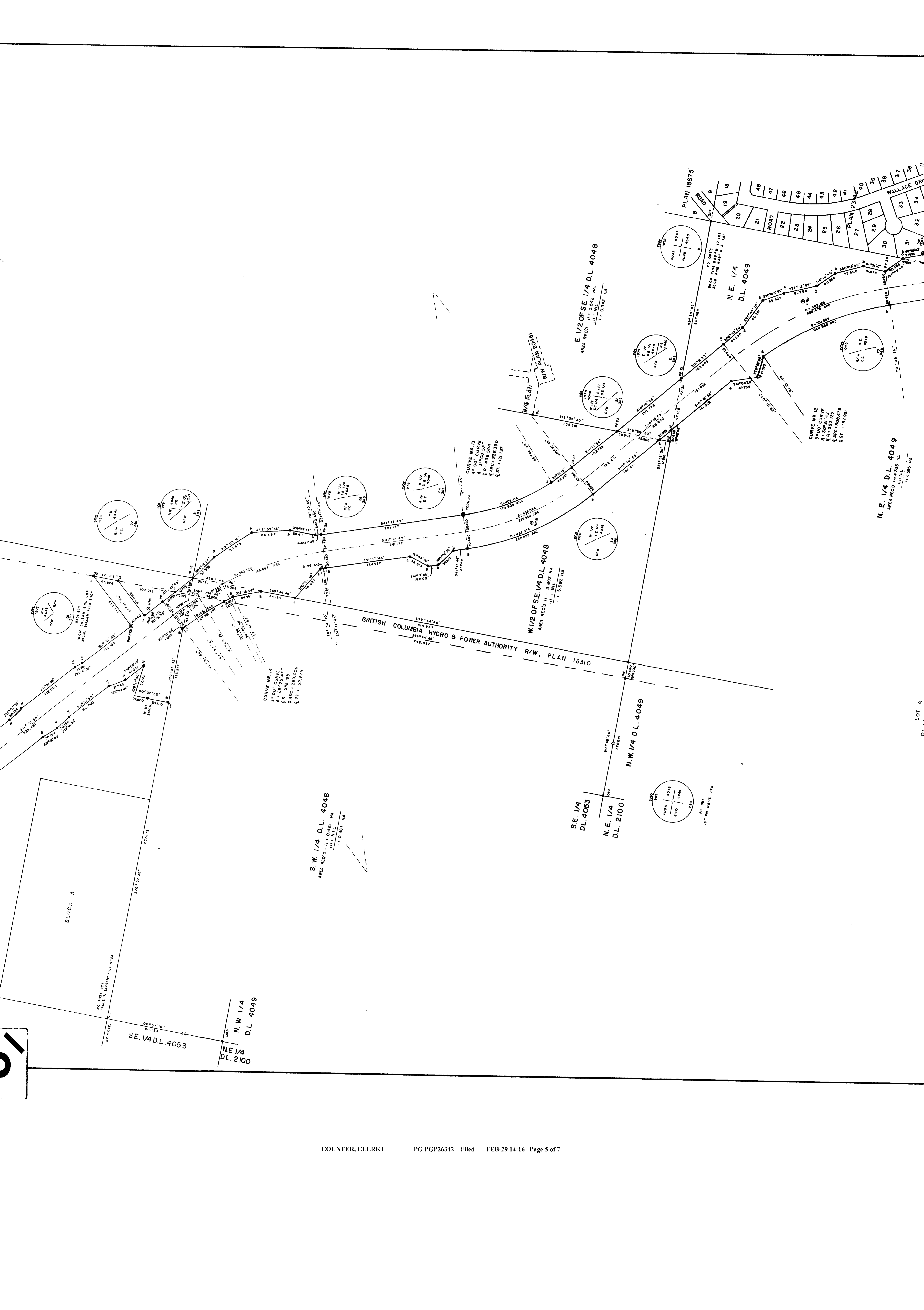
SE. 1/4 D.L. 4053

NE. 1/4 D.L. 2100

N.W. 1/4 D.L. 4049

NO PORT SET
FALL IN SURVEY PILL AREA

NO WATER



S.W. 1/4 D.L. 4048
AREA RECD - 11.1 9.461 HA
11.2 9.461 HA
1.1 9.461 HA

W. 1/2 OF SE. 1/4 D.L. 4048
AREA RECD - 11.2 5.882 HA
11.1 5.882 HA
1.1 5.882 HA

S.E. 1/4 D.L. 4053

N.E. 1/4 D.L. 2100

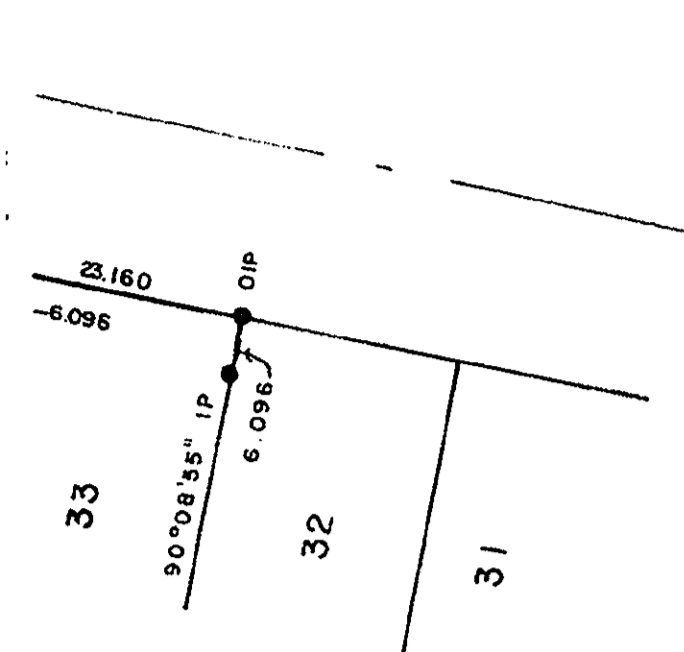
N.W. 1/4 D.L. 4049

E. 1/2 OF SE. 1/4 D.L. 4048
AREA RECD - 11.2 0.352 HA
11.1 0.352 HA
1.1 0.352 HA

N.E. 1/4 D.L. 4049

N.E. 1/4 D.L. 4049
AREA RECD - 11.4 4.330 HA
11.1 4.330 HA
1.1 4.330 HA

LOT A
PLAN 12254



S.E. 1/4 D.L. 2424

BRITISH COLUMBIA HYDRO & POWER AUTHORITY R/W, PLAN 18310

N.E. 1/4 D.L. 4048

S.W. 1/4 D.L. 2424

AREA RECD II = 5.423 HA
 III = 111 MILLS HA
 I = 0.423 HA

N.W. 1/4 D.L. 4048

AREA RECD III = 7.624 HA
 III = 111 MILLS HA
 I = 7.624 HA

S.E. 1/4 D.L. 2423

AREA RECD II = 0.421 HA
 III = 111 MILLS HA
 I = 0.421 HA

N.E. 1/4 D.L. 4053

I = 0.239 HA

SE. 1/4 D.L. 4053

N.W. 1/4 D.L. 4049

DL 2100

BLOCK A

DETAIL
 NOT TO SCALE

CURVE NO 15
 3° 00' CURVE
 Δ = 104° 47' 05"
 R = 118.275
 E.ARC = 23.424
 E.ST = 374.052

SW 1/4 D.L. 2423
 NW 1/4 D.L. 4053

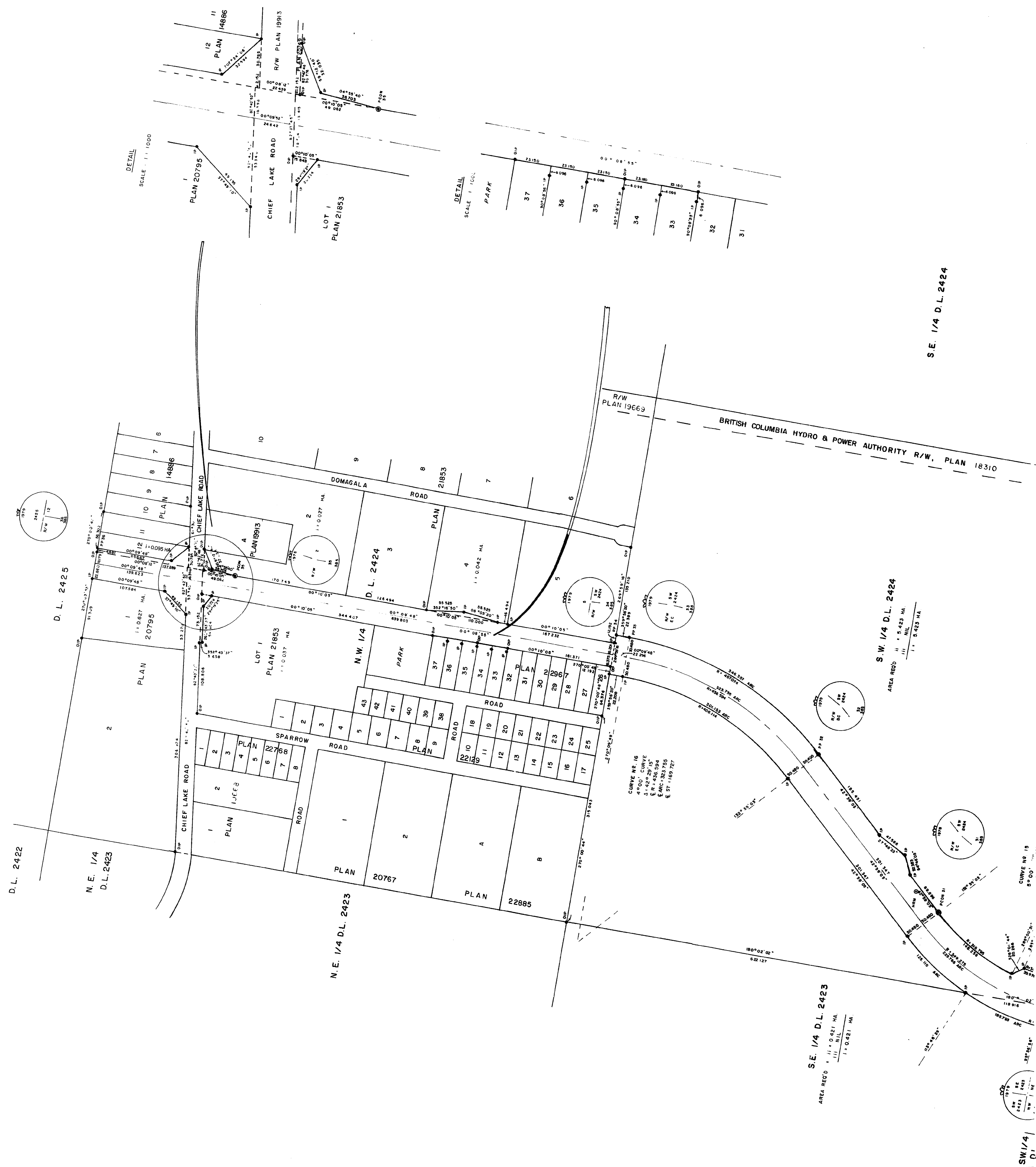
TO ONT DOWNY
 IN THE MOUNTAIN
 CURVE RTS
 25 CM BALANCE 11.53 300°
 25 CM BALANCE 7.38 180°
 25 CM BALANCE 7.28 95°

CURVE NO 14
 3° 00' CURVE
 Δ = 23° 05' 00"
 R = 582.124
 E.ARC = 239.006
 E.ST = 152.878

2

26-FF-226

1



SE 1/4 D.L. 2424

S.W. 1/4 D.L. 2424

SE 1/4 D.L. 2423