

OUTSIDE CITY BOUNDARY

PLAN OF EASEMENTS THROUGH
LOTS 2, 5, 8 & 9, PLAN
DISTRICT LOT 1595
CARIBOO DISTRICT—BRITISH COLUMBIA
SCALE: 1 : 2500

NOTE: Bearings are astronomic, derived from the north
boundaries of Lots 2 to 9, Plan

LEGEND: •OIP denotes an old iron pin found.

PLAN N^o 26319
Deposited in the Land Title
Office at Prince George, B.C. this
29th day of August, 1980.
E. J. Raven
Registrar

BOOK OF REFERENCE

PARCEL	AREA REQ'D
LOT 2	0.0492 HA.
LOT 5	0.0494 HA.
LOT 8	0.0494 HA.
LOT 9	0.0494 HA.
ALL IN PLAN	

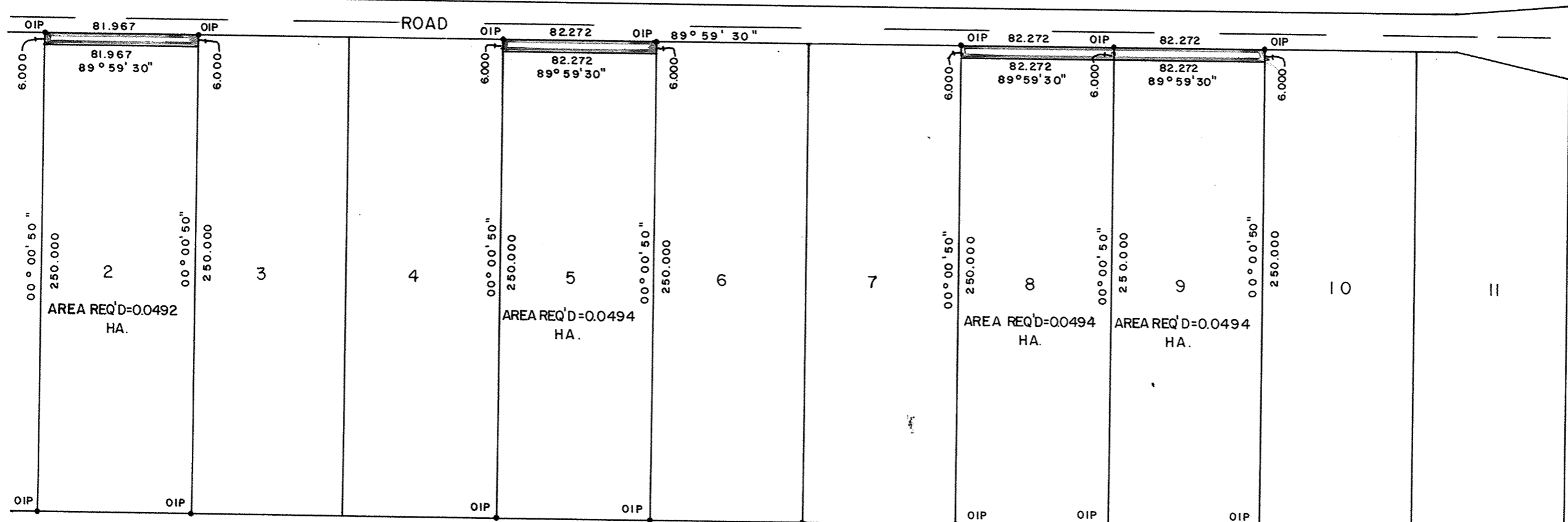


S.W. 1/4
D.L. 1594

S.E. 1/4 D.L. 1594

D.L. 1597

N.W. 1/4 D.L. 1596



D.L. 1595

I, DONALD A. DUFFY, a British Columbia Land Surveyor, of Prince George, in British Columbia, certify that I was present at and did personally superintend the survey represented by this plan, and that the survey and plan are correct. The survey was completed on the 6 day of MARCH, 1980.

This plan lies within the Fraser-Fort George Regional District.

W.D. USHER & ASSOCIATES
LAND SURVEYORS
PRINCE GEORGE — B.C.
2238-02