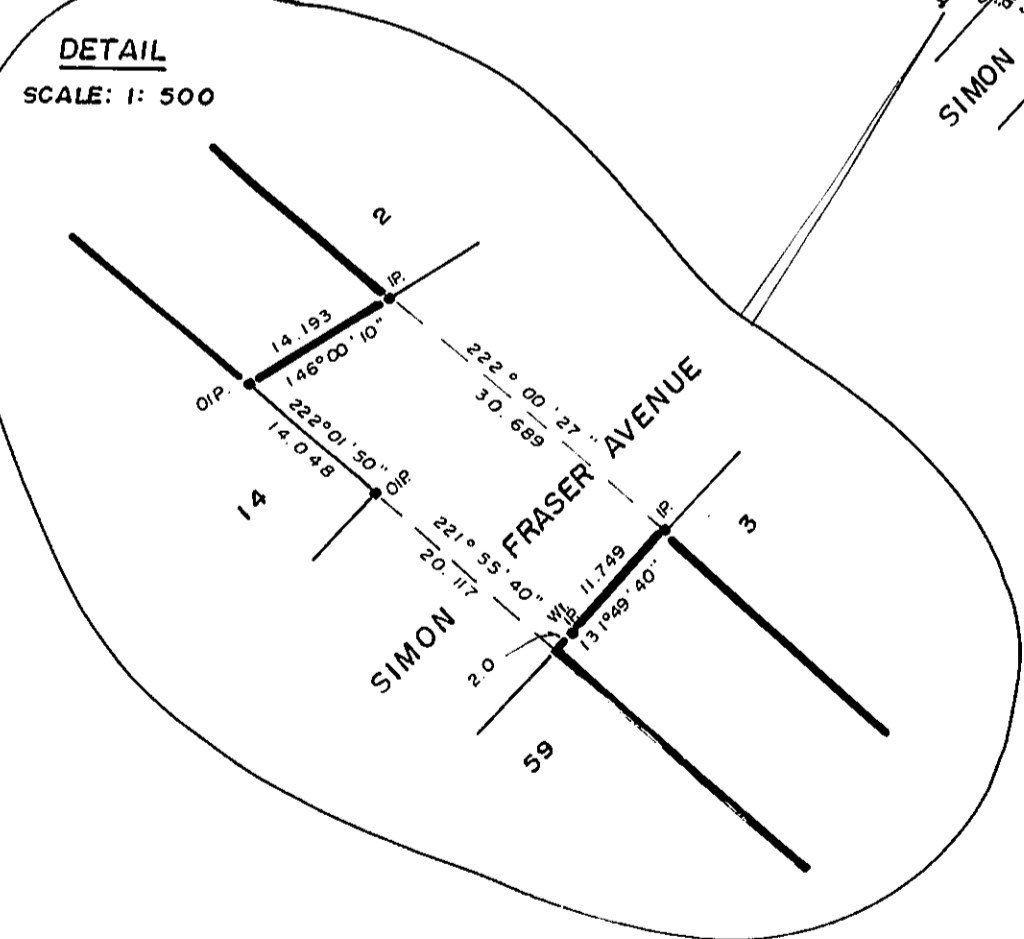
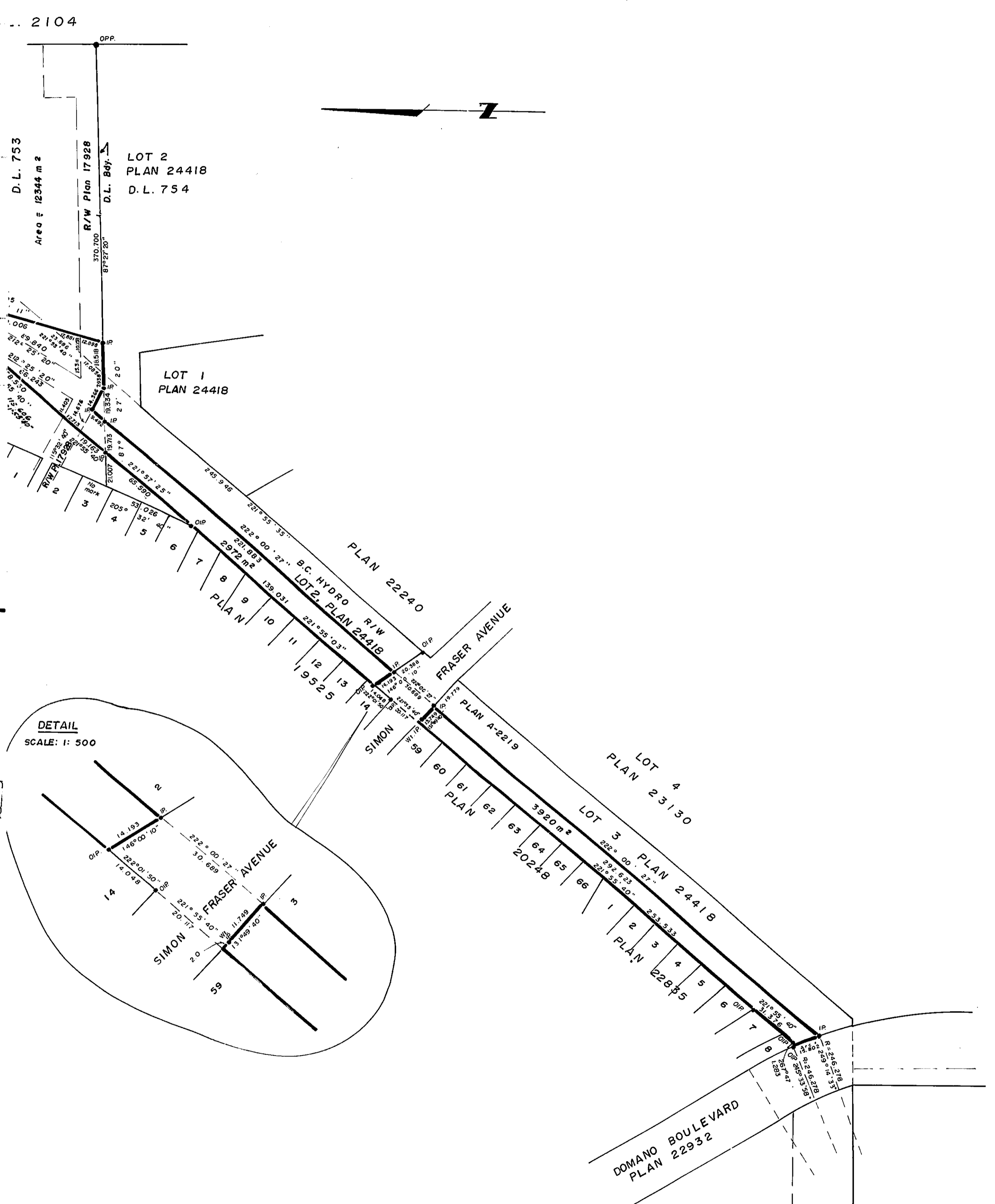


PLAN NO. 26273
 DEPOSITED IN THE LAND TITLE OFFICE AT
 PRINCE GEORGE THIS 19th DAY OF AUGUST, 1980

[Signature]
 REGISTRAR
 per E.H.



BOOK OF REFERENCE	
Description	Area
Lot 3, Plan 24418, D.L. 754	3920 m ²
Lot 2, Plan 24418, D.L. 754	2972 m ²
Prop. S.E. 1/4 & E. 1/2 of S.W. 1/4 D.L. 753	12344 m ²

CITY of PRINCE GEORGE

PLAN of STATUTORY RIGHT-of-WAY
 IN LOTS 2 and 3, PLAN 24418, D.L. 754,
 and REM. FRAC. S.E. 1/4 and E. 1/2 of S.W. 1/4
 D.L. 753, CARIBOO DISTRICT.
 Scale: 1:1250

ALL DISTANCES ARE IN METRES.

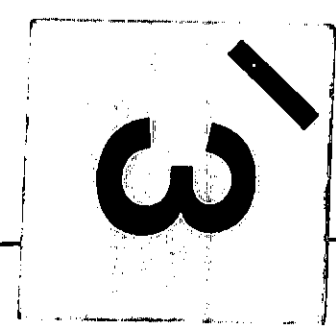
BEARINGS ARE ASTRONOMIC DERIVED FROM
 PLAN 24418.
 ● CONCRETE POST IN CONCRETE.
 ● IRON STANDARD IRON POST.
 ● PIPE STANDARD PIPE POST.
 ○ DENOTES "OLD"
 W DENOTES "WITNESS"

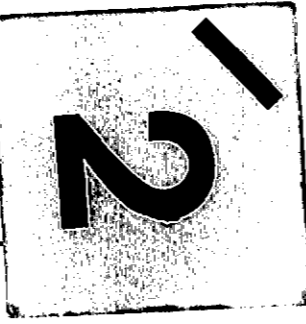
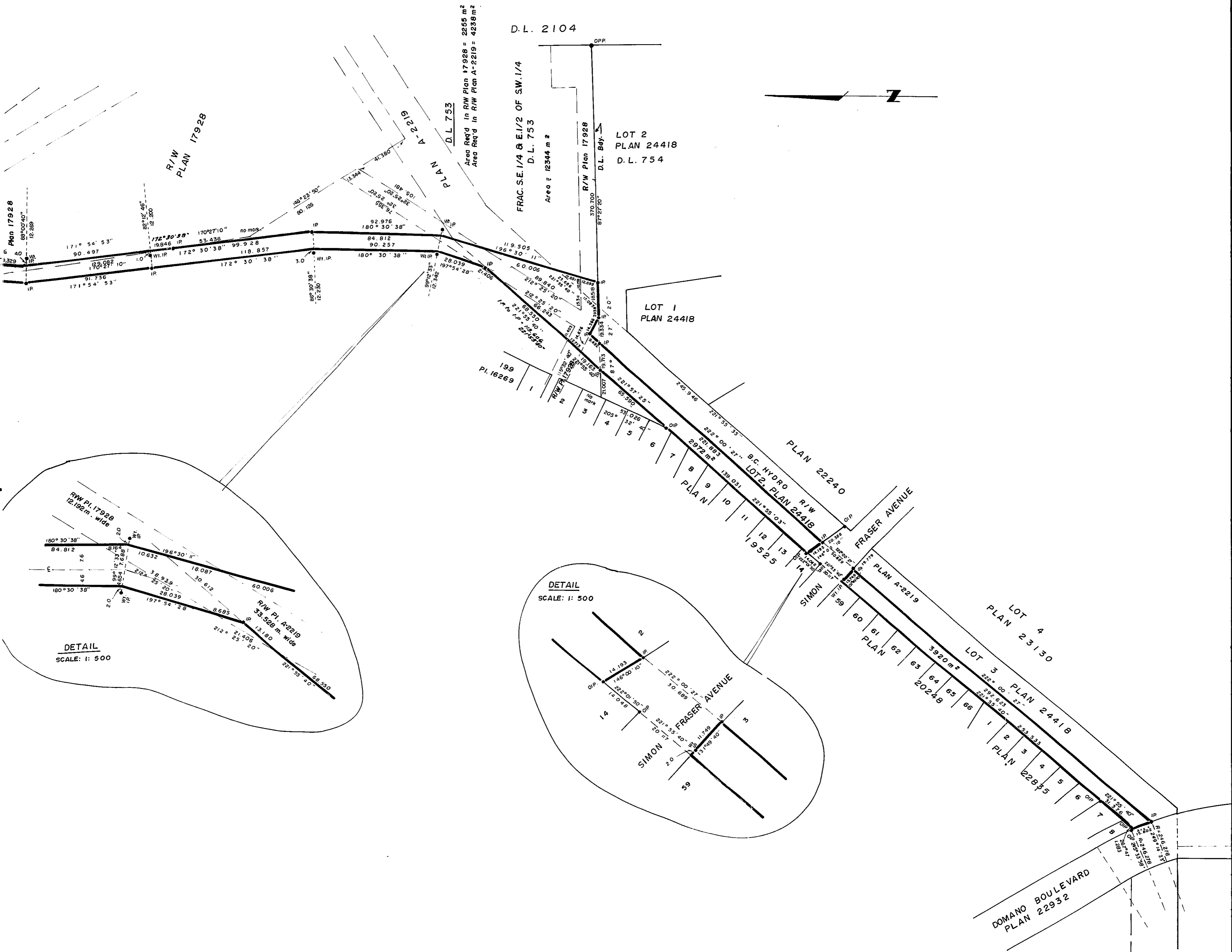
I, V. BARTELL, A BRITISH COLUMBIA LAND SURVEYOR
 OF PRINCE GEORGE IN BRITISH COLUMBIA CERTIFY THAT I
 WAS PRESENT AT AND PERSONALLY SUPERINTENDED THE
 SURVEY REPRESENTED BY THIS PLAN AND THAT THE SURVEY
 AND PLAN ARE CORRECT. THE SAID SURVEY WAS COMPLETED
 ON THE 16th DAY OF AUGUST, 1980.

[Signature]
 V. BARTELL B.C.L.S.

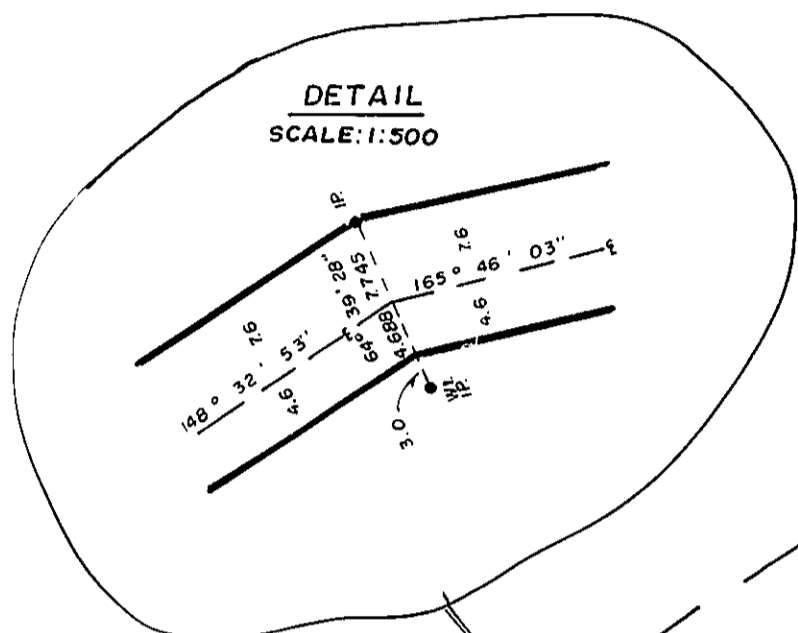
THIS PLAN LIES WITHIN THE FRASER FORT GEORGE
 REGIONAL DISTRICT.

McWILLIAM, WHYTE, GOBLE, & ASSOCIATES,
 B.C. LAND SURVEYORS,
 PRINCE GEORGE-KAMLOOPS-SMITHERS-SALMON ARM
 REF. NO. 8 0096 D.L. 753.



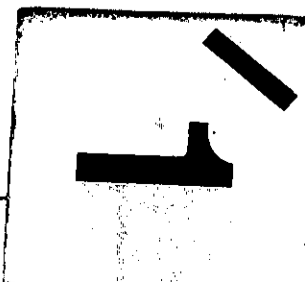
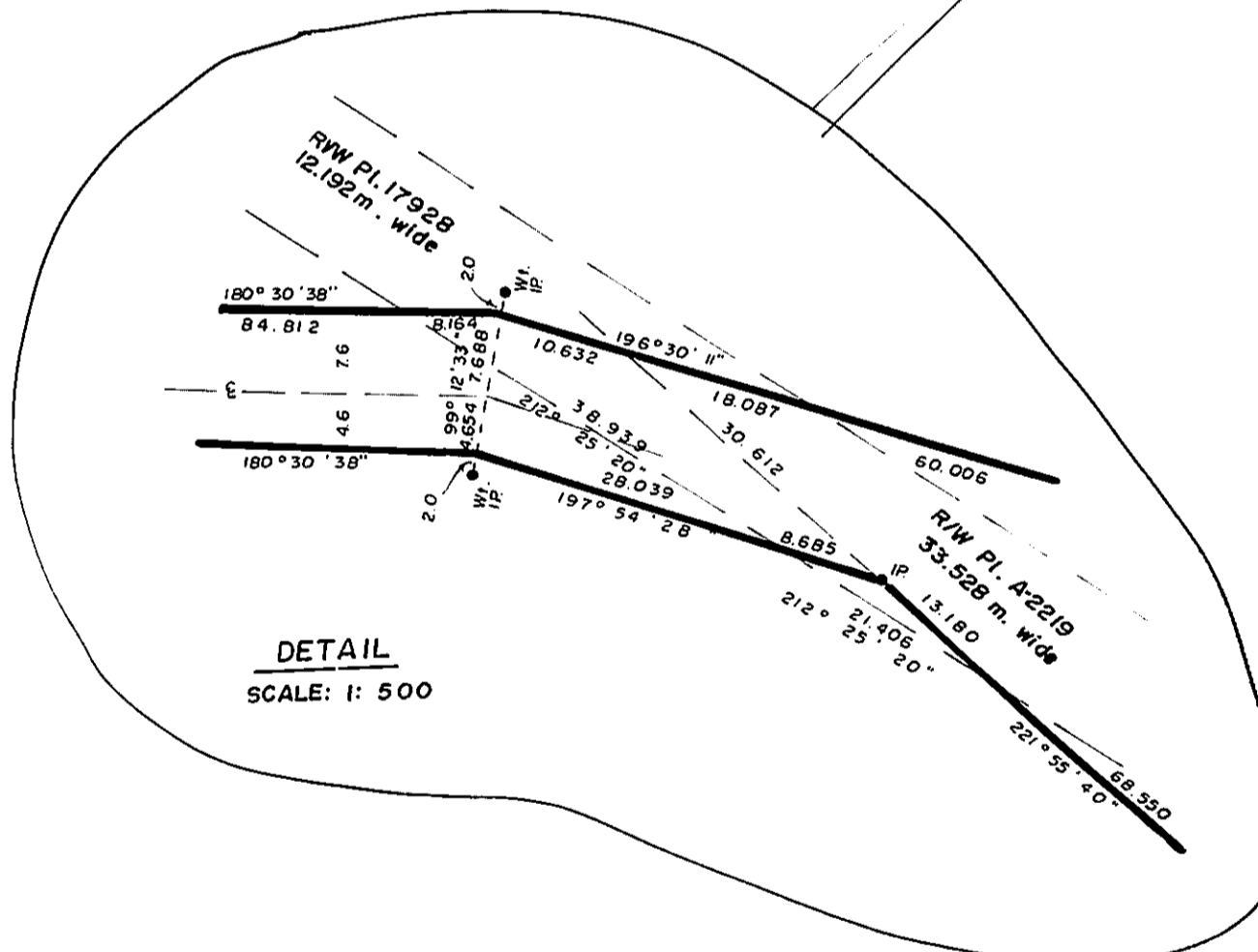
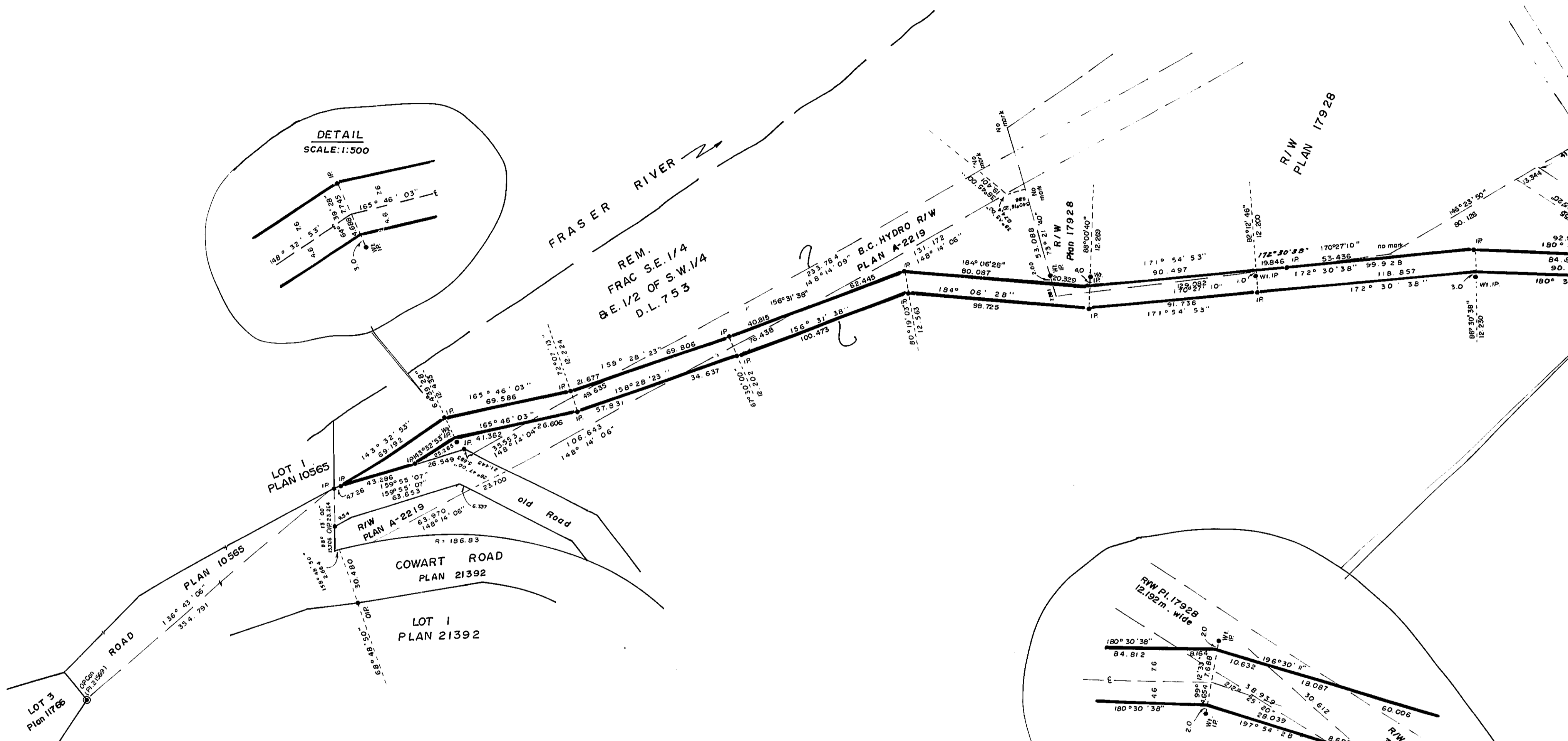


26-226



FRASER RIVER

REM. FRAC SE. 1/4 B.E. 1/2 OF S.W. 1/4 D.L. 753



26-226