

PLAN OF SUBDIVISION
OF LOT 137, PLAN 16511, D.L.913,
CARIBOO DISTRICT.

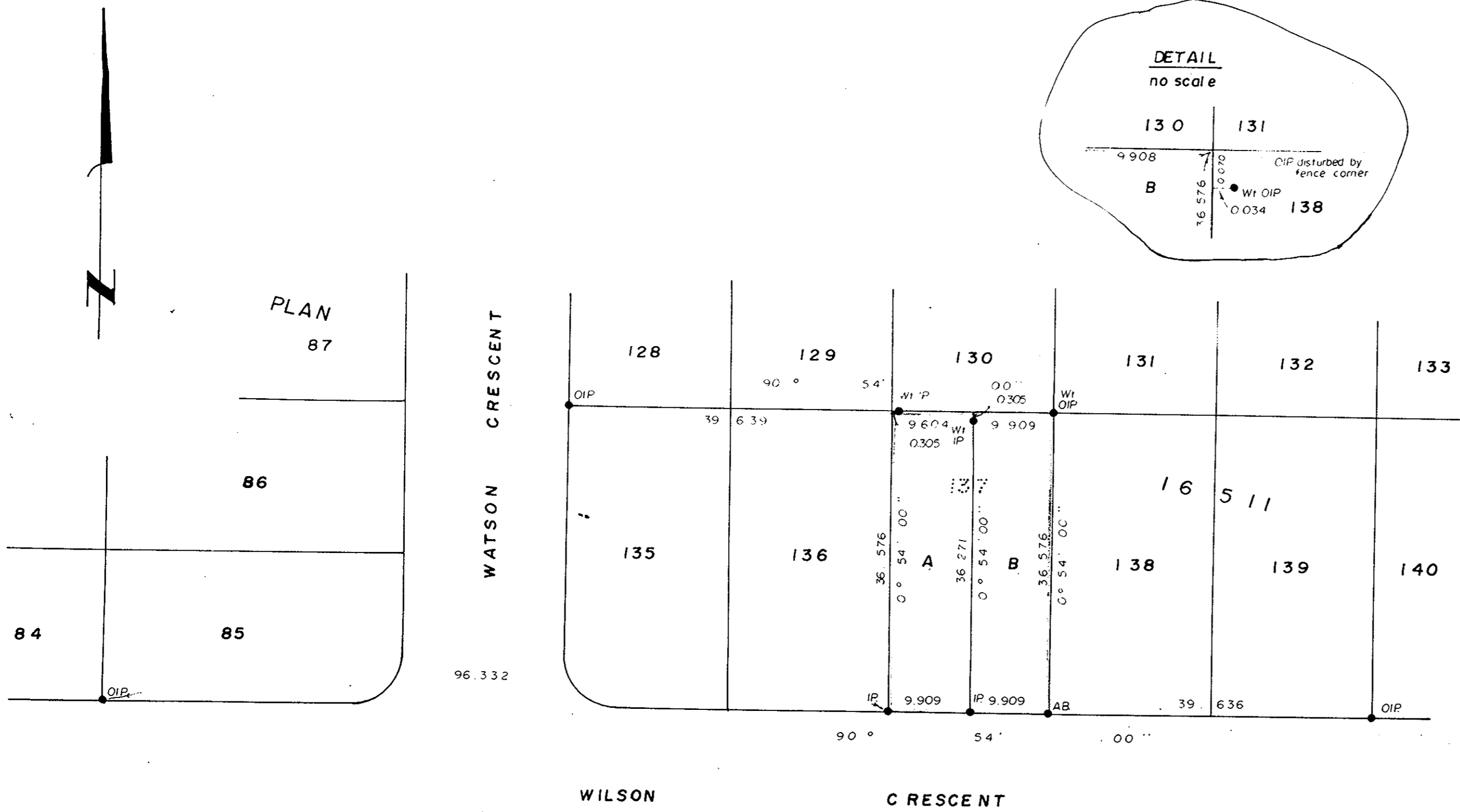
SCALE: 1:500

ALL DISTANCES ARE IN METRES.

PLAN NO. 26255

DEPOSITED IN THE LAND REGISTRY OFFICE
AT PRINCE GEORGE THIS 12 DAY OF August 1980

E. J. RAVEN
REGISTRAR



BEARINGS ARE ASTRONOMIC DERIVED
FROM PLAN 16511.

- IP... STANDARD IRON POST.
- AB... ALUMINUM BOLT.
- O... DENOTES "OLD"
- WI... DENOTES "WITNESS"

I, D. KEOWN, OF THE CITY OF PRINCE GEORGE,
BRITISH COLUMBIA LAND SURVEYORS MAKE
OATH AND SAY THAT I WAS PRESENT AT AND
DID PERSONALLY SUPERINTEND THE SURVEY
REPRESENTED BY THIS PLAN AND THAT THE
SURVEY AND PLAN ARE CORRECT. THE SAID
SURVEY WAS COMPLETED ON THE 12TH
DAY OF AUGUST, 1979.

APPROVED UNDER THE LAND REGISTRY ACT
THIS 12 DAY OF Aug 1980.

D. Keown
D. KEOWN, B.C.L.S.

C. E. Olet
APPROVING OFFICER
CITY OF PRINCE GEORGE, B.C.

SWORN BEFORE ME AT PRINCE GEORGE,
THIS 12 DAY OF AUGUST 1979.

Norman Weyse
A COMMISSIONER FOR TAKING AFFIDAVITS
FOR BRITISH COLUMBIA.

OWNER R. J. Olet
WITNESS R. J. Olet

OWNER Norman Weyse
WITNESS R. J. Olet

OWNER OF MORTGAGE: ROYAL BANK OF CANADA

THIS PLAN LIES WITHIN THE FRASER
PORT GEORGE REGIONAL DISTRICT.

Mc WILLIAM, WHYTE, GOBLE & ASSOCIATES,
B.C. LAND SURVEYORS,
PRINCE GEORGE - KAMLOOPS - SMITHERS

REF. NO. 79111