

26-226

PLAN OF EASEMENT THROUGH
LOT 36, PLAN 19732
DISTRICT LOT 2101
CARIBOO DISTRICT — BRITISH COLUMBIA

SCALE: 1" = 50'

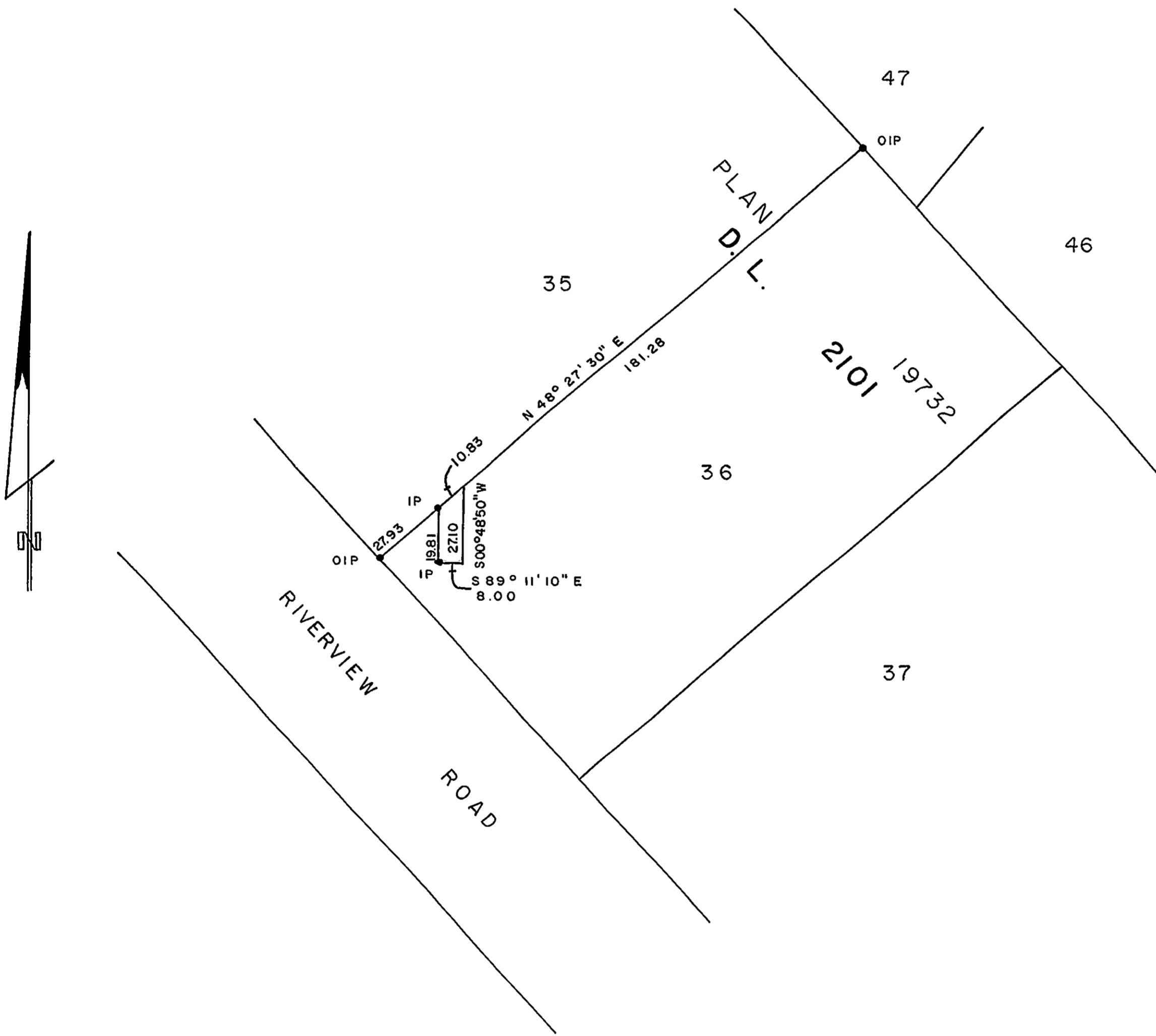
NOTE: Bearings are astronomic, derived from the southeasterly boundary of Lot 35, Plan 19732.

LEGEND: •OIP denotes an old iron pin found.
•IP denotes an iron pin set.

PLAN No **26253**

Deposited in the Land Title Office at Prince George, B.C. this 12th day of August, 1980.

E. J. Raven
Registrar
per E.M.



I, DONALD A. DUFFY, a British Columbia Land Surveyor, of Prince George, in British Columbia, certify that I was present at and did personally superintend the survey represented by this plan, and that the survey and plan are correct. The survey was completed on the 9 day of June, 1977.

[Signature]

This plan lies within the Fraser- Fort George Regional District.

W. D. USHER & ASSOCIATES
LAND SURVEYORS
PRINCE GEORGE — B.C.
J X 61 9102 A