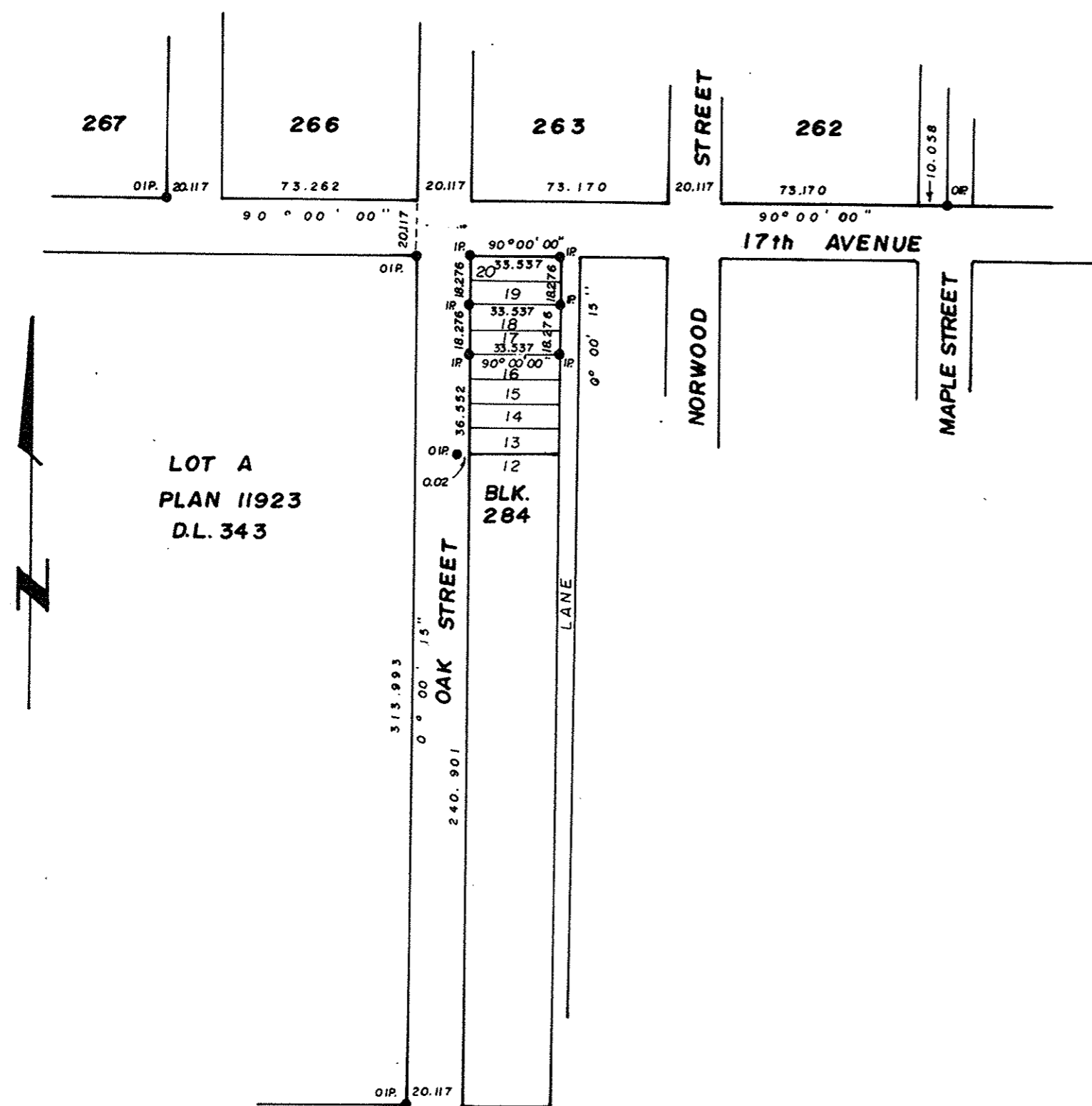


# POSTING

PLAN NO. 26218  
DEPOSITED IN THE LAND TITLE OFFICE AT  
PRINCE GEORGE THIS 29 DAY OF July 1980.



PLAN OF POSTING OF PARTS  
OF LOTS 17, 18, 19 and 20, BLOCK 284,  
PLAN 1268, D. L. 343, CARIBOO DISTRICT.  
SCALE: 1: 2000

ALL DISTANCES ARE IN METRES.

BEARINGS ARE ASTRONOMIC DERIVED FROM  
PLAN 1268, 17th AVENUE SHOWN AS 90°00'00"  
● IP..... STANDARD IRON POST.  
○ ..... DENOTES "OLD"

CERTIFIED CORRECT  
THIS 18th DAY OF JULY, 1980.  
*V. Bartell*  
V. BARTELL, B.C.L.S.

THIS PLAN LIES WITHIN THE FRASER FORT  
GEORGE REGIONAL DISTRICT.

McWILLIAM, WHYTE, GOBLE, & ASSOCIATES,  
B.C. LAND SURVEYORS,  
PRINCE GEORGE - KAMLOOPS - SMITHERS - SALMON ARM

REF. NO. 80130