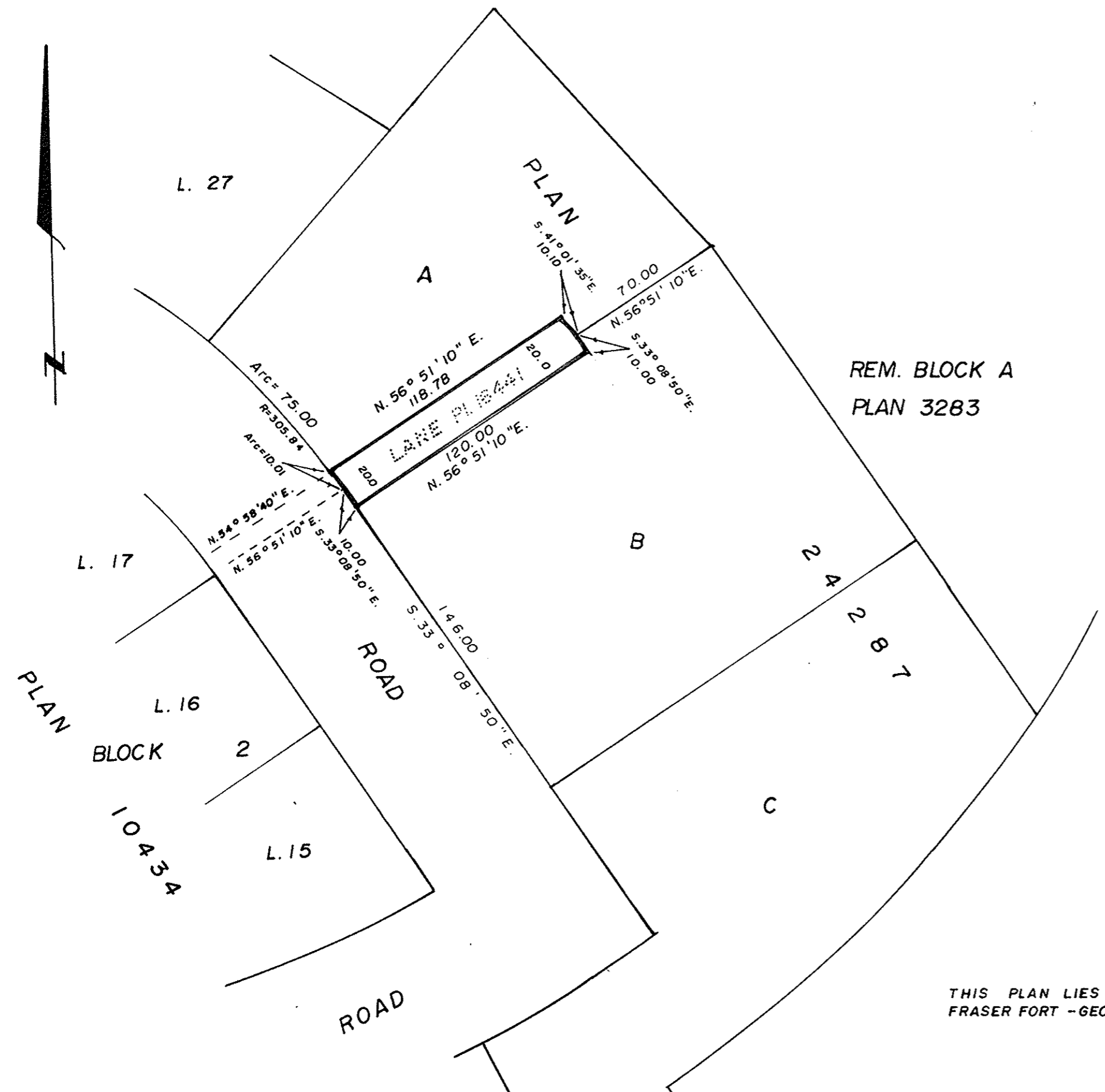


Plotted HQ

26147

PLAN NO. _____
 DEPOSITED IN THE LAND REGISTRY OFFICE
 AT PRINCE GEORGE THIS 27 DAY OF July 1980.

--- E.J. RAVEN ---
 REGISTRAR



REM. BLOCK A
 PLAN 3283

PLAN TO ACCOMPANY BY-LAW 3200,
 CITY OF PRINCE GEORGE, B.C.
 CLOSING LANE ADJOINING
 LOTS A and B, PLAN 24287,
 DISTRICT LOT 753,
 CARIBOO DISTRICT.
 SCALE : 1" = 50'

Note: Area of Lane to be closed = 2394 sq. ft.

Certified Correct according to Plan 16441
 this 27 day of April , 1979.

--- V. Bartell ---
 V. BARTELL, B.C.L.S.

THIS PLAN LIES WITHIN THE
 FRASER FORT - GEORGE REGIONAL DISTRICT.

Mc WILLIAM, WHYTE, GOBLE, & ASSOCIATES,
 B.C. LAND SURVEYORS,
 PRINCE GEORGE - KAMLOOPS - SMITHERS.
 REF. NO. 78015 - A
 D.L. 753.

City of Prince George