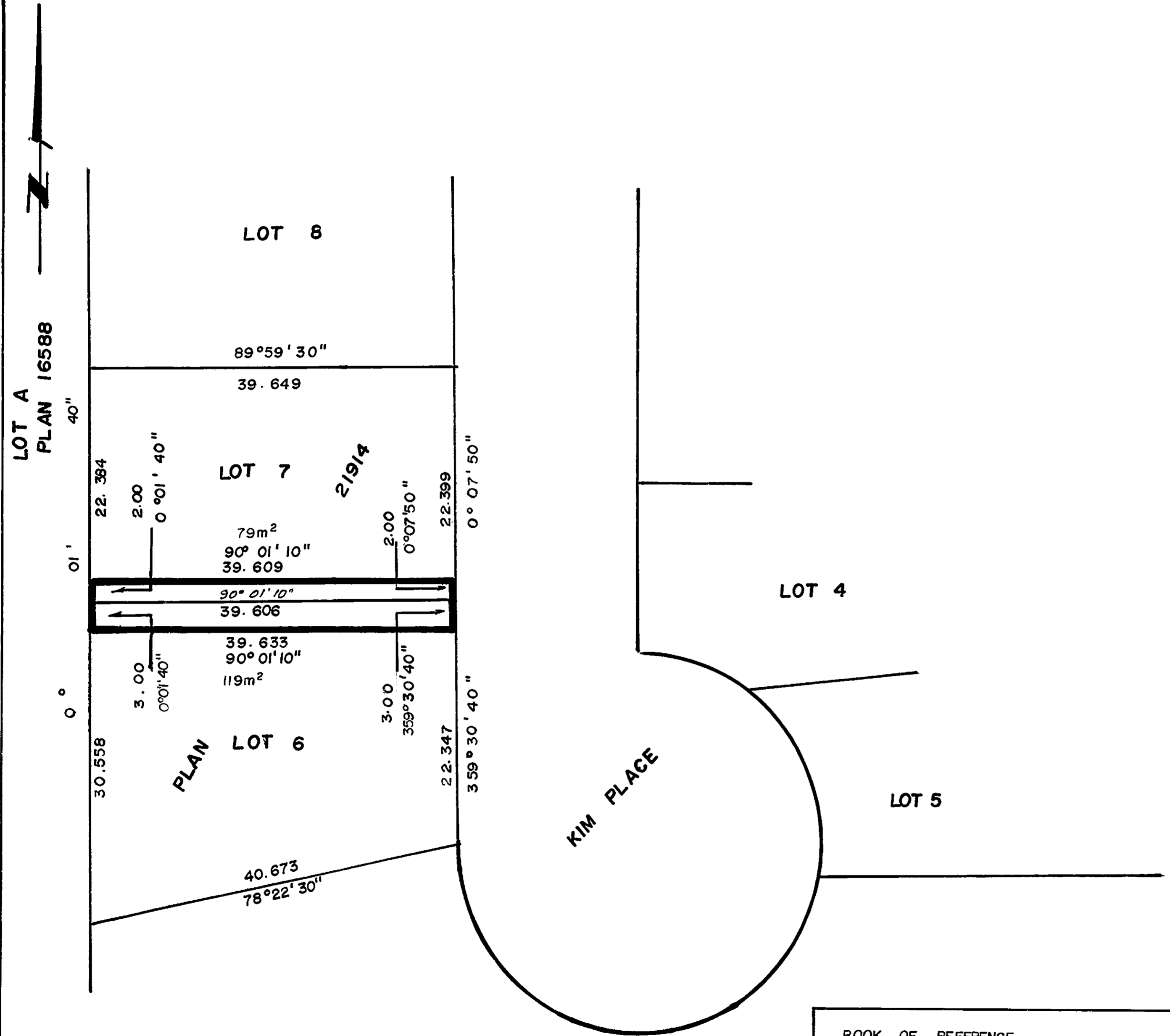


26-226



PLAN NO. 26124

DEPOSITED IN THE LAND TITLE OFFICE AT PRINCE GEORGE THIS 25th DAY OF June, 1980.

REGISTRAR *E. J. Raven* per *E.M.*

CITY OF PRINCE GEORGE

EXPLANATORY PLAN OF STATUTORY RIGHT OF WAY IN LOTS 6 & 7, PLAN 21914, D.L. 4047, CARIBOO DISTRICT.

SCALE: 1:500 ALL DISTANCES ARE IN METRES.

CERTIFIED CORRECT ACCORDING TO INFORMATION SHOWN ON PLAN 21914 THIS 2 DAY OF June, 1980.

V. Bartell
V. BARTELL B. C. L. S.

BOOK OF REFERENCE

LOT 6, PLAN 21914 ---- 119m²
LOT 7, PLAN 21914 ---- 79m²

THIS PLAN LIES WITHIN THE FRASER FORT GEORGE REGIONAL DISTRICT.

MWILLIAM, WHYTE, GOBLE & ASSOCIATES
B. C. LAND SURVEYORS
PRINCE GEORGE-KAMLOOFS-SMITHERS-SALMON ARM

REF. NO. 80088