

Plotted (HH)

PLAN OF SUBDIVISION OF
LOT 3, PLAN 10043,
D.L. 1433, CARIBOO DISTRICT.

SCALE: 1:500

ALL DISTANCES ARE IN METRES.

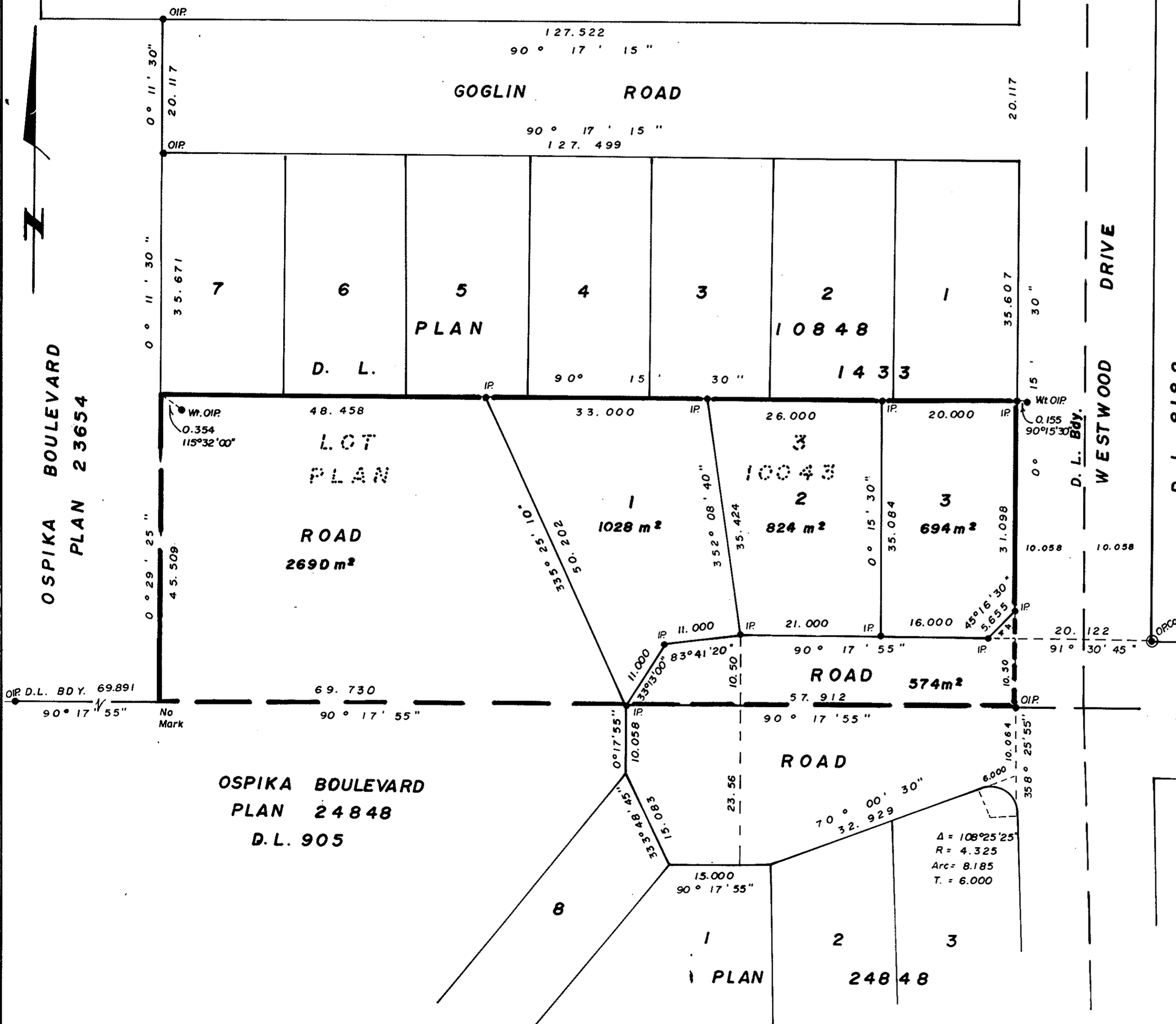
PLAN NO. 26084
DEPOSITED IN THE LAND TITLE OFFICE AT
PRINCE GEORGE THIS 16 DAY OF JUNE 1980.

E. J. RAVEN
REGISTRAR

RECEIVED
JUN 18 1980

B.C. ASSESSMENT
ALCOCK

DESERVED
JUN 18 1980
B.C. ASSESSMENT
ALCOCK



BEARINGS ARE ASTRONOMIC DERIVED FROM
PLAN 23694.

- IP... STANDARD IRON POST.
- P.P... STANDARD PIPE POST.
- DENOTES "OLD"

I, V. BARTELL, A BRITISH COLUMBIA LAND SURVEYOR,
OF PRINCE GEORGE IN BRITISH COLUMBIA CERTIFY
THAT I WAS PRESENT AT AND PERSONALLY
SUPERINTENDED THE SURVEY REPRESENTED BY
THIS PLAN AND THAT THE SURVEY AND PLAN ARE
CORRECT. THE SAID SURVEY WAS COMPLETED
ON THE 23 DAY OF JUNE 1980.

APPROVED UNDER THE LAND TITLE ACT
THIS 19 DAY OF JUNE 1980.

C. E. Olet
APPROVING OFFICER
CITY OF PRINCE GEORGE

THE SEAL OF THE CITY OF PRINCE GEORGE
WAS AFFIXED HERETO IN THE PRESENCE OF:

MAYOR: E. W. [Signature]

CITY CLERK: [Signature]

V. BARTELL, B.C.L.S.

THIS PLAN LIES WITHIN THE FRASER
FORT GEORGE REGIONAL DISTRICT.

Mc WILLIAM, WHYTE, GOBLE, & ASSOCIATES,
B.C. LAND SURVEYORS,
PRINCE GEORGE - KAMLOOPS - SMITHERS - SALMON ARM.

REF. NO. 80074. D.L. 1433