

PLOTTED (GR)

PLAN OF EASEMENTS THROUGH
 LOTS 40, 41 & 42, PLAN 26060
 DISTRICT LOT 4046
 CARIBOO DISTRICT — BRITISH COLUMBIA

SCALE: 1 : 500

NOTE: Bearings are astronomic, derived from the
 south boundary of Lot 40, Plan 26060

LEGEND: •OIP denotes an old iron pin found.

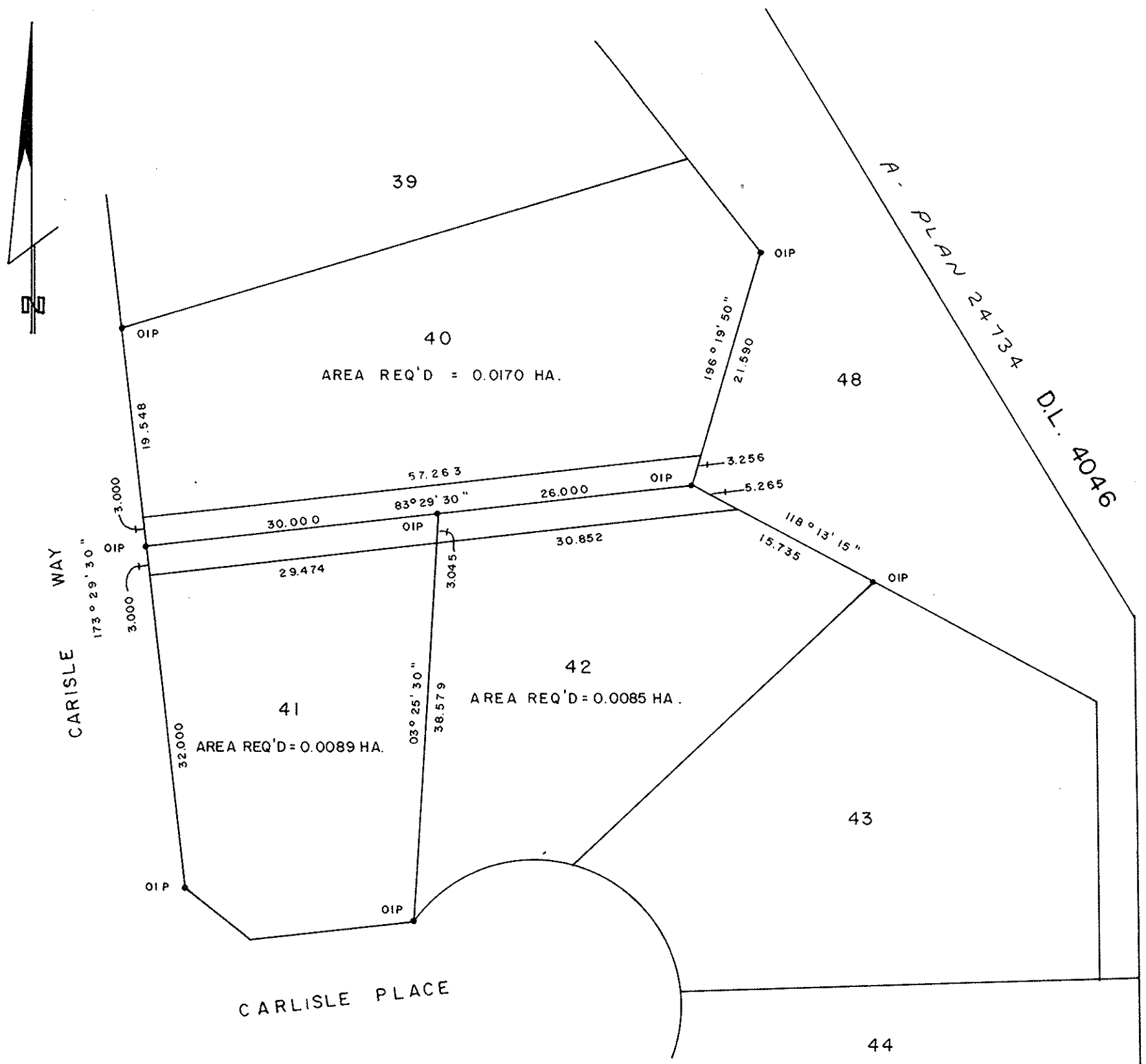
PLAN N^o 26062

Deposited in the Land Title
 Office at Prince George, B.C. this
 9th day of June, 1980.

E. J. Raven
 Registrar
 per E.M.

BOOK OF REFERENCE

PARCEL	AREA REQ'D
LOT 40	0.0170 HA.
LOT 41	0.0089 HA.
LOT 42	0.0085 HA.
ALL IN PLAN	26060



I, DONALD A. DUFFY, a British Columbia Land
 Surveyor, of Prince George, in British Columbia,
 certify that I was present at and did personally
 superintend the survey represented by this plan,
 and that the survey and plan are correct. The
 survey was completed on the 10 day of April
 1980.

Donald A. Duffy

This plan lies within the Fraser- Fort George
 Regional District

W. D. USHER & ASSOCIATES
 LAND SURVEYORS
 PRINCE GEORGE — B.C.