

City of Prince George

Office of the Registrar

PLOTTED (G\$) (GR)

PLAN OF EASEMENTS THROUGH
LOTS 29 & 30, PLAN 26060
DISTRICT LOT 4046
CARIBOO DISTRICT — BRITISH COLUMBIA

SCALE: 1 : 500

NOTE: Bearings are astronomic, derived from the
south boundary of Lot 29, Plan 26060

LEGEND: • OIP denotes an old iron pin found.

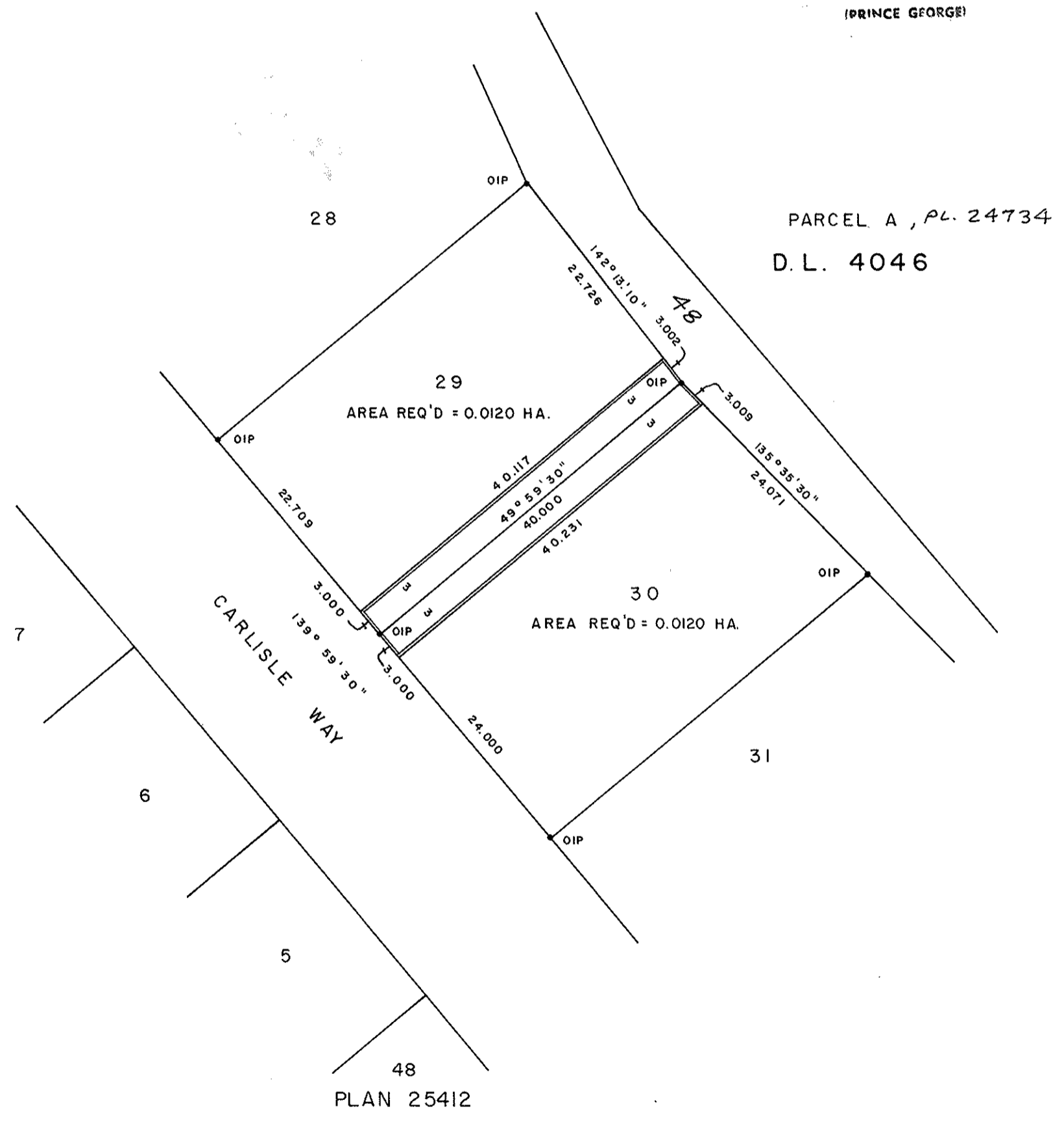
PLAN No 26061
Deposited in the Land Title
Office at Prince George, B.C. this
9th day of June, 1980.

E. J. Raven
Registrar

BOOK OF REFERENCE

PARCEL	AREA REQ'D
LOT 29, PLAN 26060	0.0120 HA.
LOT 30, PLAN 26060	0.0120 HA.

RECEIVED
RECEIVED
 JUN 18 1980
 AUTHORITY
 B.C. ASSESSMENT
 AUTHORITY
 (PRINCE GEORGE)



I, DONALD A. DUFFY, a British Columbia Land Surveyor, of Prince George, in British Columbia, certify that I was present at and did personally superintend the survey represented by this plan, and that the survey and plan are correct. The survey was completed on the 10 day of April, 1980.

This plan lies within the Fraser- Fort George Regional District.

W. D. USHER & ASSOCIATES
 LAND SURVEYORS
 PRINCE GEORGE — B.C.
 8954 H