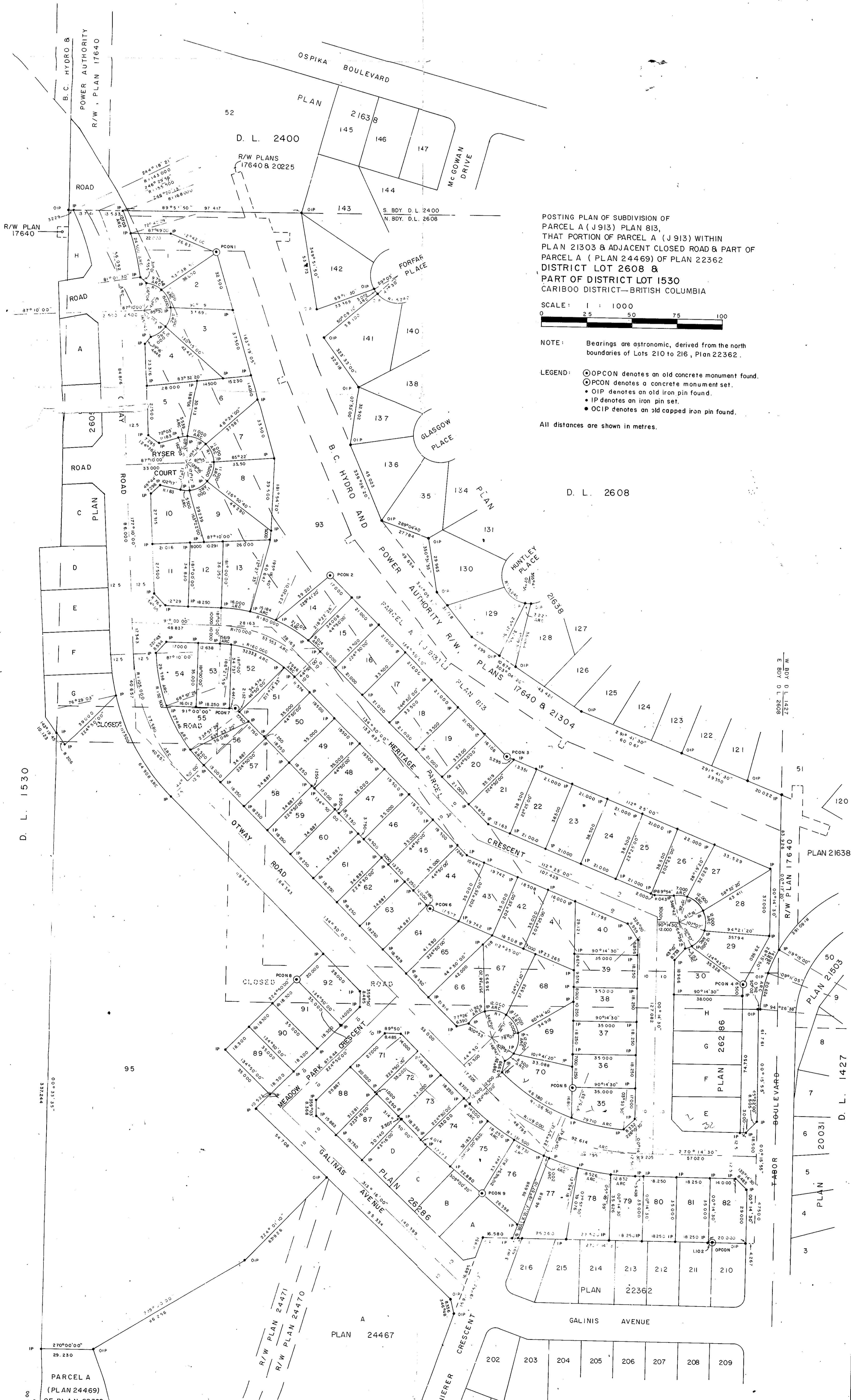


City of Prince George
2004

PLAN No 26049
Deposited in the Land Title
Office at Prince George, B. C. this
30. day of March, 1997.

E. J. RAVEN
Registrar



POSTING PLAN OF SUBDIVISION OF
PARCEL A (J 913) PLAN 813,
THAT PORTION OF PARCEL A (J 913) WITHIN
PLAN 21303 & ADJACENT CLOSED ROAD & PART OF
PARCEL A (PLAN 24469) OF PLAN 22362
DISTRICT LOT 2608 &
PART OF DISTRICT LOT 1530
CARIBOO DISTRICT—BRITISH COLUMBIA

SCALE: 1 : 1000
0 25 50 75 100

NOTE: Bearings are astronomic, derived from the north
boundaries of Lots 210 to 216, Plan 22362.

LEGEND: ○OPCON denotes an old concrete monument found.
●PCON denotes a concrete monument set.
•OIP denotes an old iron pin found.
•IP denotes an iron pin set.
•OCIP denotes an old capped iron pin found.

All distances are shown in metres.

- 1979
33
2
PCON 2
- 1979
20
3
PCON 3
- 1979
30
4
PCON 4
- 1979
70
5
PCON 5
- 1979
64
6
PCON 6
- 1979
52
55
7
PCON 7
- 1979
92
91
8
PCON 8
- 1979
75
83
9
PCON 9

D. L. 1530

D. L. 2608

111.07
7.8%

212.98

1.5%