

PLOTTED (HJ)

PLAN NO. <sup>26047</sup> 26047  
DEPOSITED IN THE LAND TITLE OFFICE AT  
PRINCE GEORGE THIS 4 DAY OF JULY 1980.

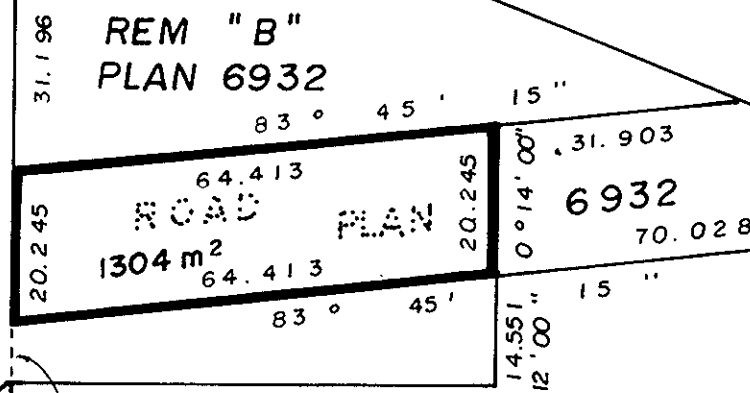
--- *E. J. Rimm* ---  
REGISTRAR

BY PASS HIGHWAY  
PLAN H-700



PLAN 21078

LOT 1  
PLAN 21077



"A"  
PLAN 15750

REM. LOT A  
PLAN 6932

D. L. 8180

REM.  
D.L. 8173

EXPLANATORY PLAN TO ACCOMPANY BY LAW 3573  
CITY OF PRINCE GEORGE, CLOSING PART OF ROAD  
AS SHOWN ON PLAN 6932 ADJOINING  
LOT 1, PLAN 21077, AND REMAINDER LOT B,  
PLAN 6932, D. L. 8180, CARIBOO DISTRICT.  
SCALE: 1:1000

ALL DISTANCES ARE IN METRES.

CERTIFIED CORRECT  
ACCORDING TO PLAN 6932 & PLAN 21077,  
THIS 9th DAY OF APRIL, 1980

*V. Bartell*  
V. BARTELL B.C.L.S.

THIS PLAN LIES WITHIN THE FRASER  
FORT GEORGE REGIONAL DISTRICT.

McWILLIAM, WHYTE, GOBLE, & ASSOCIATES,  
B.C. LAND SURVEYORS,  
PRINCE GEORGE-KAMLOOPS-SMITHERS-SALMON ARM

REF. NO. 80051

DL. 8180