

Plotted (HP)(JP)

PLAN NO. 26043
DEPOSITED IN THE LAND TITLE OFFICE AT
PRINCE GEORGE THIS 4th DAY OF June 1980.

E. J. Raven
REGISTRAR

RECEIVED
JUN 18 1980
B.C. ASSESSMENT
AUTHORITY
(PRINCE GEORGE)

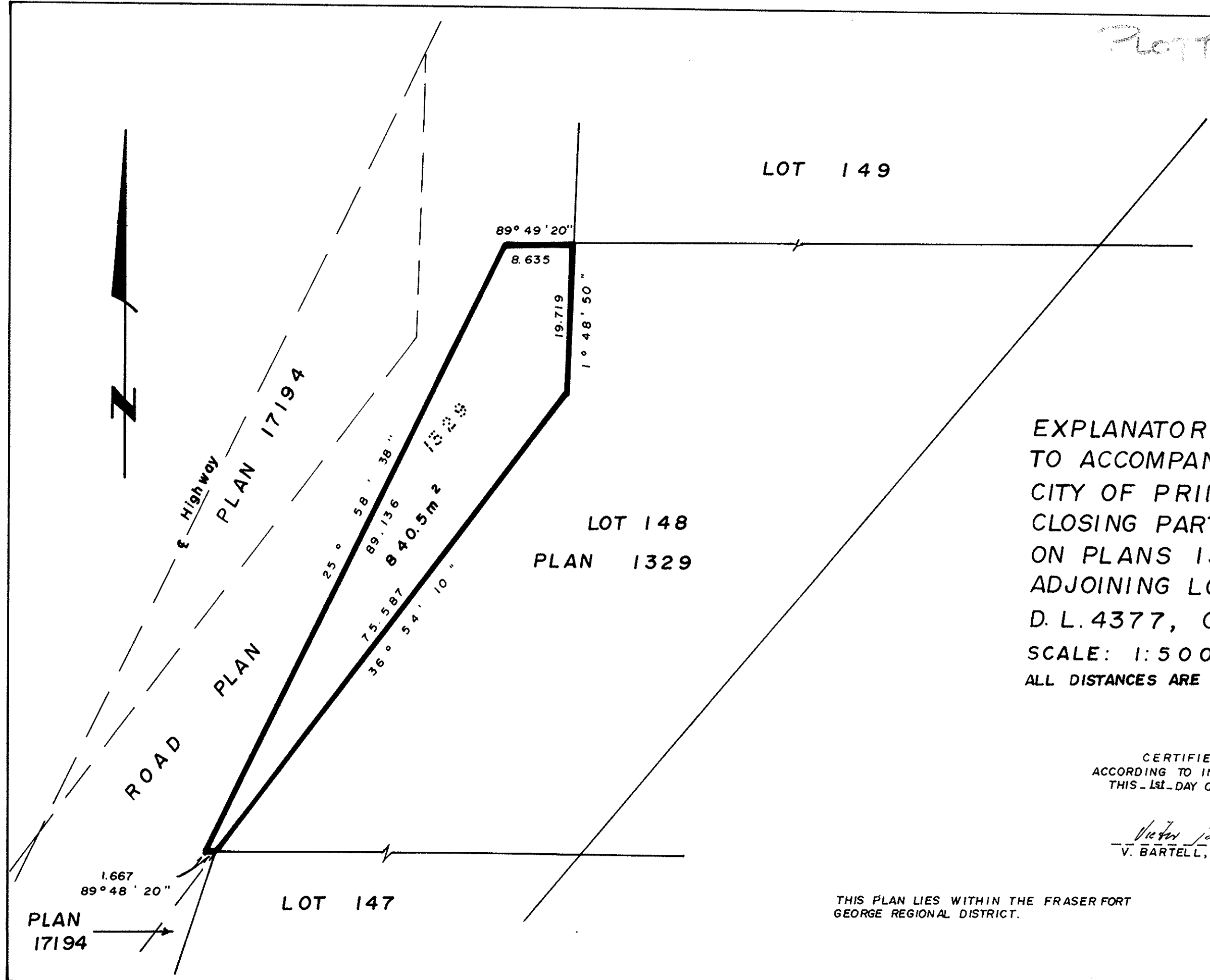
EXPLANATORY PLAN
TO ACCOMPANY BY LAW 3533,
CITY OF PRINCE GEORGE,
CLOSING PART OF HIGHWAY AS SHOWN
ON PLANS 1329 and 17194,
ADJOINING LOT 148, PLAN 1329,
D. L. 4377, CARIBOO DISTRICT.
SCALE: 1:500
ALL DISTANCES ARE IN METRES.

CERTIFIED CORRECT
ACCORDING TO INFORMATION ON PLAN 17194
THIS 1st DAY OF FEBRUARY 1980.

V. Bartell
V. BARTELL, B.C.L.S.

THIS PLAN LIES WITHIN THE FRASER FORT
GEORGE REGIONAL DISTRICT.

Mc WILLIAM, WHYTE, GOBLE, & ASSOCIATES,
B.C. LAND SURVEYORS,
PRINCE GEORGE-KAMLOOPS-SMITHERS.
REF. NO. 79046



City of Prince George