

PLAN OF SUBDIVISION OF
 CLOSED ROAD, (PLAN 25988)
 DISTRICT LOT 625 & PARTS OF
 N.W. 1/4 & S.W. 1/4 DISTRICT LOT 625 &
 LOTA, PLAN 18560,
 DISTRICT LOT 625
 CARIBOO DISTRICT—BRITISH COLUMBIA

SCALE: 1 : 1000

NOTE: Bearings are astronomic, derived from the
 north boundary of Lot A, Plan 18560.

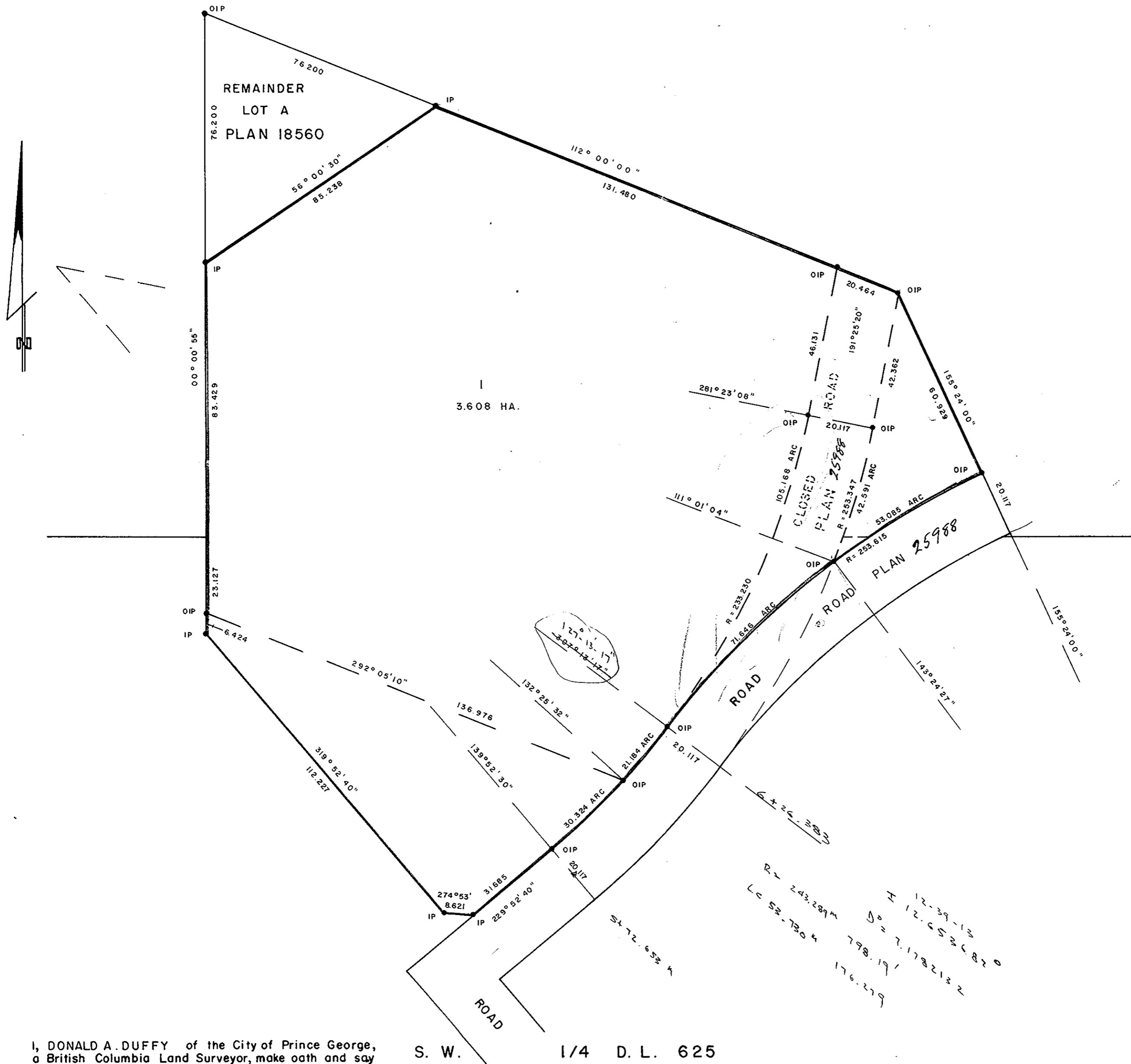
LEGEND: ● OIP denotes an old iron pin found.
 ● IP denotes an iron pin set.

PLAN N^o 25989

Deposited in the Land Registry
 Office at Prince George, B.C. this
 15 day of MAY, 1980.

Registrar E. J. RAVEN

N. W. 1/4 D. L. 625



I, DONALD A. DUFFY of the City of Prince George,
 a British Columbia Land Surveyor, make oath and say
 that I was present at and did personally superintend
 the survey represented by this plan and that the survey
 and plan are correct. The said survey was completed
 on the 20th day of September, 1978.

[Signature]
 B.C.L.S.

Sworn before me this 2
 day of FEB., 1979

A Commissioner for taking Affidavits
 for British Columbia.

S. W. 1/4 D. L. 625

SCHOOL DISTRICT N^o 57

[Signature]
[Signature]

Approved under the Land Registry Act
 this 29 day of APRIL, 1980

C. E. Olet.
 Approving Officer, City of Prince George

This plan lies within the Fraser-Fort George
 Regional District.

W. D. USHER & ASSOCIATES
 LAND SURVEYORS
 PRINCE GEORGE — B.C.
 1W 70 9016 A

D 9-5-80