

PLAN TO ACCOMPANY
 BYLAW NO. 25988 OF THE CITY OF PRINCE GEORGE
 (SECTION 509 OF THE MUNICIPAL ACT)
 CLOSING PART OF ROAD ADJACENT TO LOT A, PLAN 18560
 DISTRICT LOT 625
 AND DEDICATING AS ROAD PARTS OF
 N.W. 1/4 & S.W. 1/4 OF DISTRICT LOT 625
 CARIBOO DISTRICT - BRITISH COLUMBIA

SCALE: 1 : 1000

NOTE: Bearings are astronomic, derived from the north boundary of Lot A, Plan 18560.

LEGEND: • OIP denotes an old iron pin found.
 • IP denotes an iron pin set.

Plotted (DB)

PLAN NO. 25988

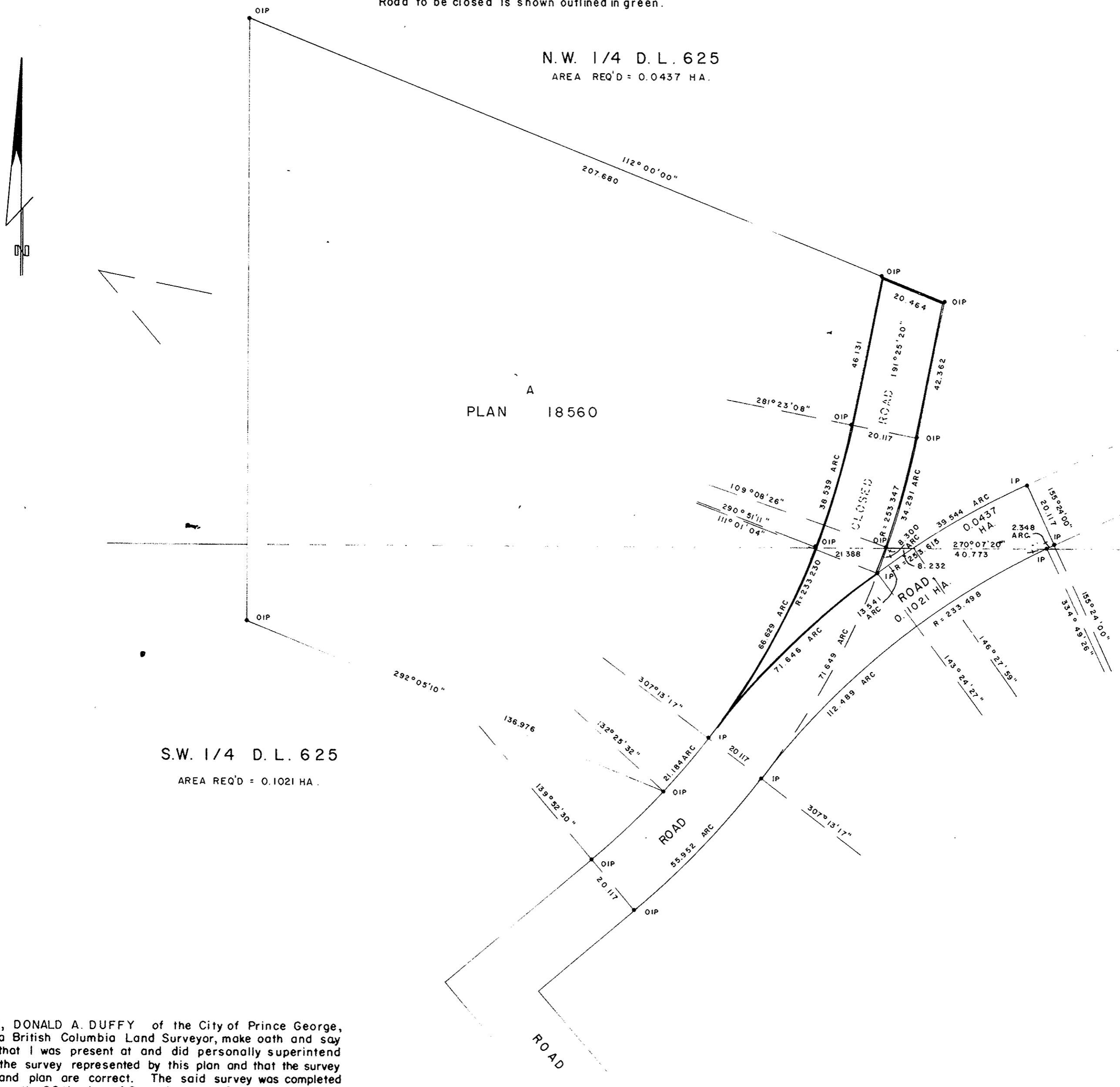
Deposited in the Land Registry
 Office at Prince George, B.C. this
 15 day of MAY, 1978

Registrar E.S. RAVEN

BOOK OF REFERENCE

PARCEL	AREA REQ'D
NW 1/4 D.L. 625	0.0437 HA.
S.W. 1/4 D.L. 625	0.1021 HA.

NOTE: Road to be dedicated is shown outlined in red.
 Road to be closed is shown outlined in green.



I, DONALD A. DUFFY of the City of Prince George, a British Columbia Land Surveyor, make oath and say that I was present at and did personally superintend the survey represented by this plan and that the survey and plan are correct. The said survey was completed on the 20th day of September, 1978.

B.C.L.S.

Sworn before me this 2 day of FEB, 1978

E.S. RAVEN
 A Commissioner for taking Affidavits for British Columbia.

This plan lies within the Fraser-Fort George Regional District.