

PLAN OF SUBDIVISION OF PART OF
S. 1/2 DISTRICT LOT 4050
CARIBOO DISTRICT—BRITISH COLUMBIA

SCALE: 1 : 2500

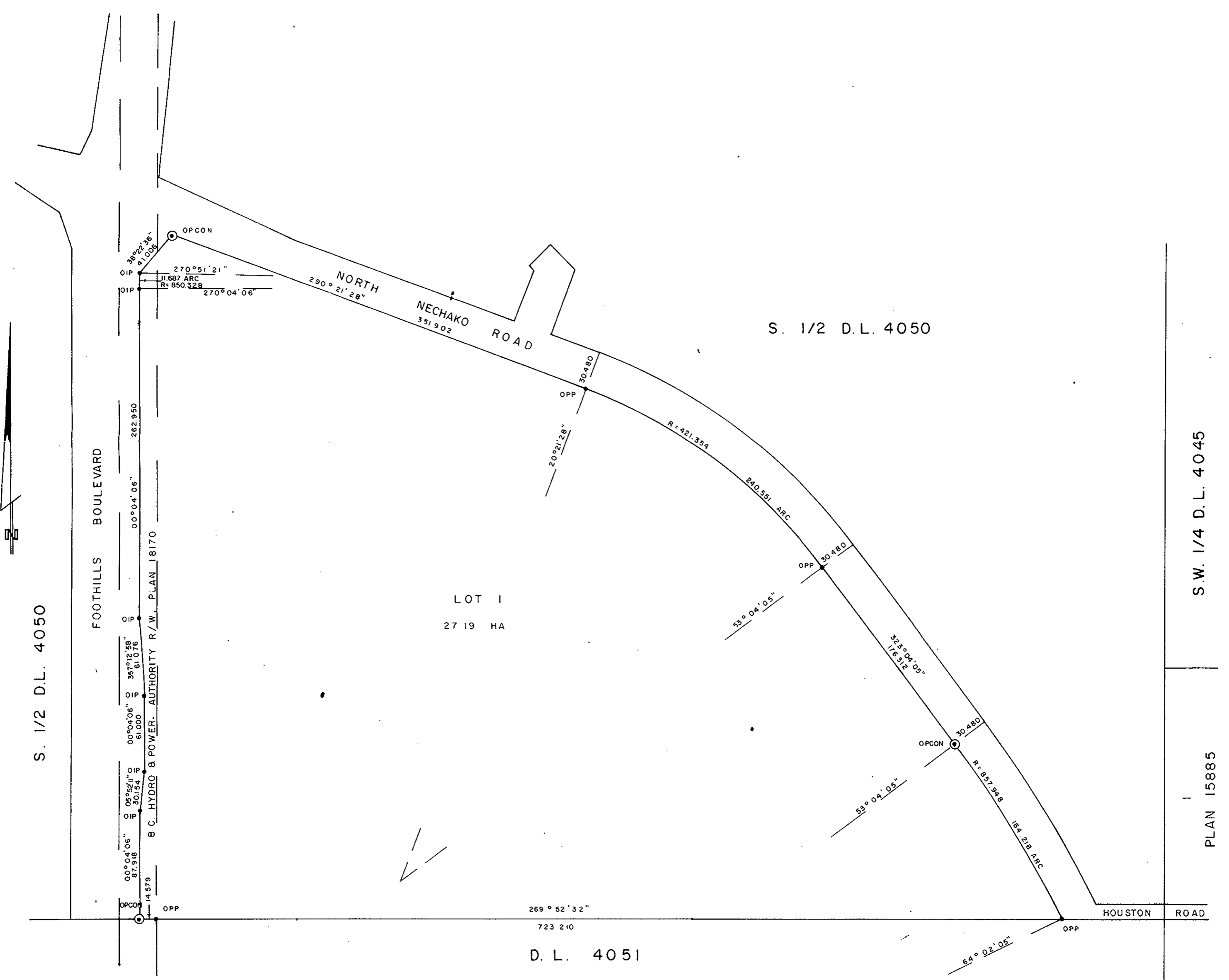
NOTE: Bearings are astronomic, derived from Polaris observations and are referred to the meridian through the east boundary of Foothills Boulevard.

LEGEND:
 ● OPCON denotes an old concrete monument found.
 • OPP denotes an old pipe post found.
 • OIP denotes an old iron pin found.

PLAN N^o **25854**

Deposited in the Land Title Office at Prince George, B.C. this 8 day of APRIL, 1982

Registrar E. J. RAVEN



I, DONALD A. DUFFY of the City of Prince George, a British Columbia Land Surveyor, make oath and say that I was present at and did personally superintend the survey represented by this plan and that the survey and plan are correct. The said survey was completed on the 5th day of February, 1980.

SUPERIOR GRAVEL CO. LTD.

Approved under the Land Title Act this 15 day of MAR, 1982

Sworn before me this _____ day of _____, 1982

Authorized Signatory _____

C. E. Oust
 Approving Officer, City of Prince George

Authorized Signatory _____

This plan lies within the Fraser-Fort George Regional District.

A Commissioner for taking Affidavits for British Columbia.

W. D. USHER & ASSOCIATES
 LAND SURVEYORS
 PRINCE GEORGE — B.C.