

PLAN OF SUBDIVISION OF PART OF REMAINDER OF
N. E. 1/4 DISTRICT LOT 4046
CARIBOO DISTRICT—BRITISH COLUMBIA

PLOTTED GS GT

SCALE: 1" = 100'

NOTE: Bearings are astronomic, derived from the west boundary of N.E. 1/4 D.L. 4046 as shown on Plan 20360.

LEGEND: *OPP denotes an old pipe post found.
•OIP denotes an old iron pin found.
•IP denotes an iron pin set.

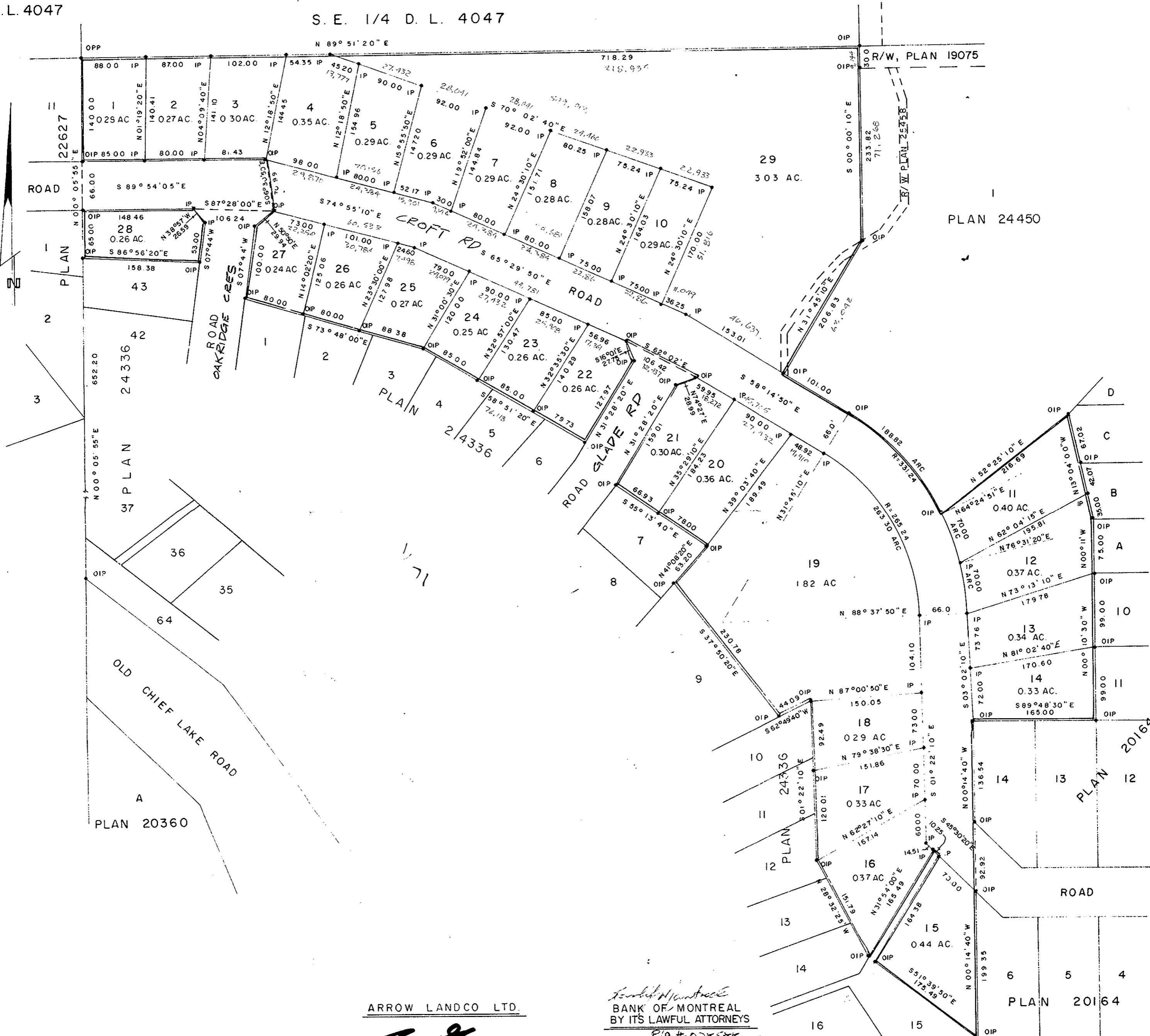
PLAN N^o 25839

Deposited in the Land Title Office at Prince George, B.C. this 28th day of March, 1980

E. J. P.
Registrar
P.M. E.M.

D.L. 4047

S. E. 1/4 D. L. 4047



I, DONALD A. DUFFY of the City of Prince George, a British Columbia Land Surveyor, make oath and say that I was present at and did personally superintend the survey represented by this plan and that the survey and plan are correct. The said survey was completed on the 6th day of Sept., 1977.

[Signature]
B.C.L.S.

Sworn before me this _____ day of _____, 19__

A Commissioner for taking Affidavits for British Columbia.

ARROW LANDCO LTD.

[Signature]
Authorized Signatory
[Signature]
Authorized Signatory

BANK OF MONTREAL
BY ITS LAWFUL ATTORNEYS

[Signature]
Assistant Manager Credit
[Signature]
Manager Credit
Witness as to oath:
Maurice Law
2670 Elton St.
Van. B.C.
Notary Public

Approved under the Land Title Act this 13 day of MAR, 1980

[Signature]
Approving Officer, City of Prince George

This plan lies within the Fraser-Fort George Regional District.

W D USHER & ASSOCIATES
LAND SURVEYORS
PRINCE GEORGE — B.C.