

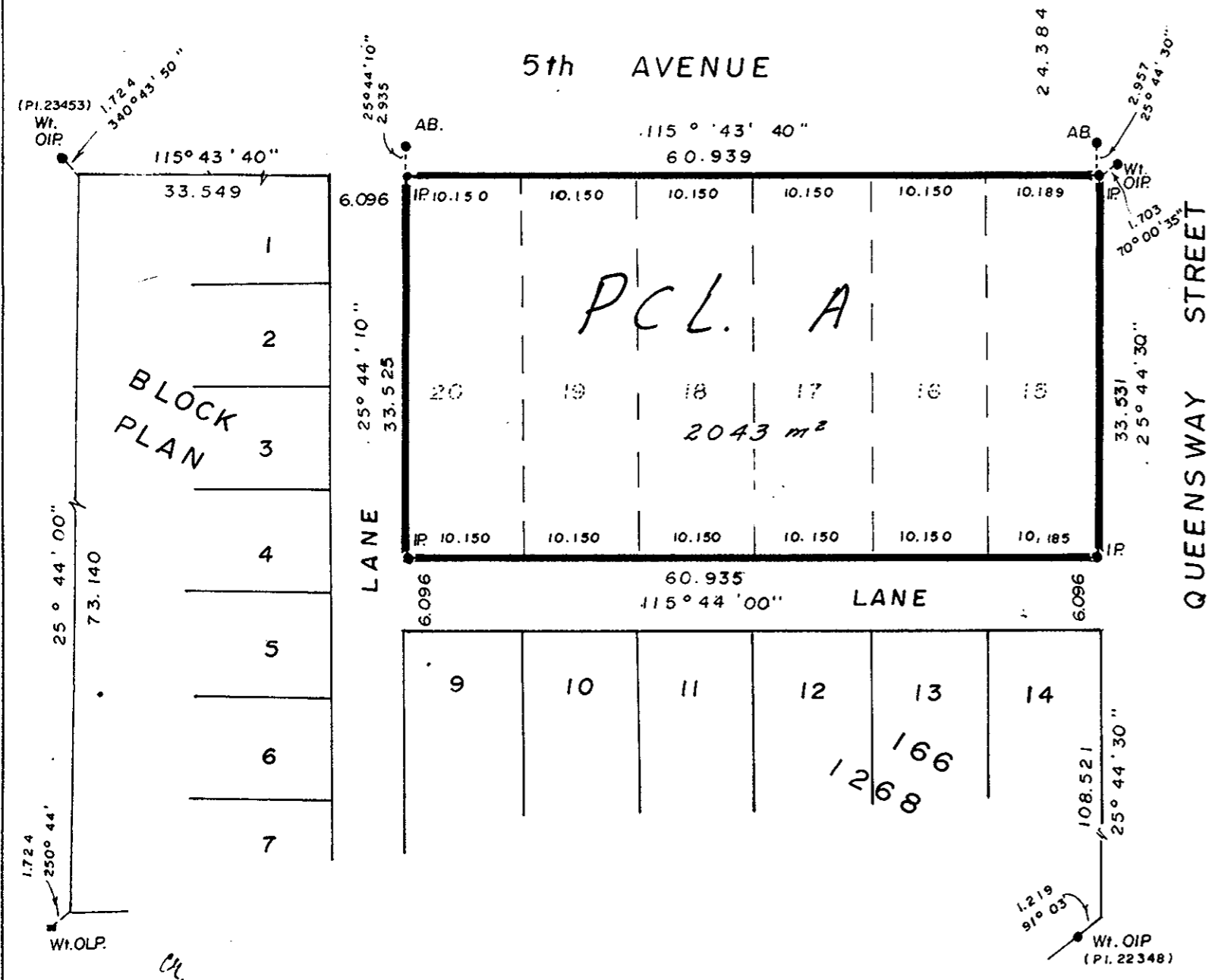
PLOTTED (JL)

PLAN NO. 25782
DEPOSITED IN THE LAND TITLE OFFICE AT
PRINCE GEORGE THIS 13 DAY OF MARCH 1980.

REGISTRAR

RECEIVED
MAR 15 1980
B.C. ASSESSMENT
AUTHORITY
(PRINCE GEORGE)

PLAN 23453



REFERENCE PLAN TO ACCOMPANY
THE APPLICATION PURSUANT TO SECTION 131
OF THE LAND TITLE ACT, CANCELLING
THE INTERIOR LINES OF LOTS 15 TO 20
INCLUSIVE, BLOCK 166, PLAN 1268,
D. L. 343, CARIBOO DISTRICT.
SCALE : 1 : 500
ALL DISTANCES ARE IN METRES.

BEARINGS ARE ASTRONOMIC DERIVED
FROM PLAN 1268.

- IP... STANDARD IRON POST.
- AB... ALUMINUM BOLT *in concrete.*
- LP... LEAD PLUG *in concrete.*
- DENOTES "OLD"
- Wt.....DENOTES "WITNESS"

I, V. BARTELL, A BRITISH COLUMBIA LAND SURVEYOR,
OF PRINCE GEORGE IN BRITISH COLUMBIA, CERTIFY THAT
I WAS PRESENT AT AND PERSONALLY SUPERINTENDED
THE SURVEY REPRESENTED BY THIS PLAN AND THAT
THE SURVEY AND PLAN ARE CORRECT. THE SAID
SURVEY WAS COMPLETED ON THE 12 DAY OF
FEBRUARY, 1980.

V. Bartell
V. BARTELL, B.C.L.S.

THIS PLAN LIES WITHIN THE FRASER
FORT GEORGE REGIONAL DISTRICT.

Mc WILLIAM, WHYTE, GOBLE, & ASSOCIATES
B.C. LAND SURVEYORS,
PRINCE GEORGE - KAMLOOPS - SMITHERS.

REF. NO. 80022