

(25742)

26-226

PLAN OF EASEMENT THROUGH  
LOT 2, PLAN 25740  
DISTRICT LOT 4031  
CARIBOO DISTRICT—BRITISH COLUMBIA

PLAN No 25742

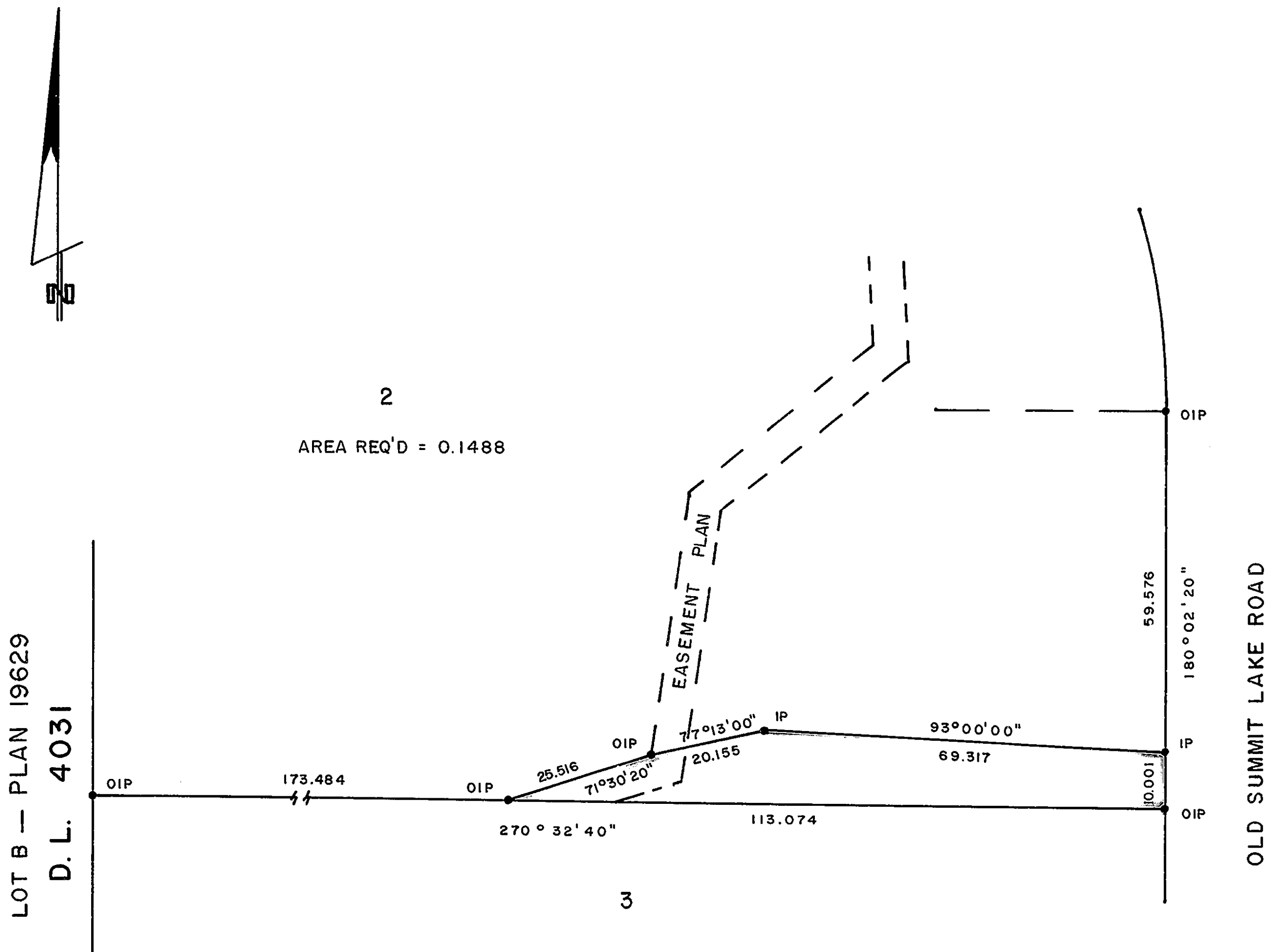
Deposited in the Land Title  
Office at Prince George, B.C. this  
3<sup>rd</sup> day of March, 1980.

SCALE: 1 : 1000

NOTE: Bearings are astronomic, derived from the  
south boundary of Lot 2, Plan 25740

E. J. Raven per fg  
Registrar

LEGEND: •OIP denotes an old iron pin found.  
•IP denotes an iron pin set.



LOT B — PLAN 19629  
D. L. 4031

2  
AREA REQ'D = 0.1488

OLD SUMMIT LAKE ROAD

I, DONALD A. DUFFY, a British Columbia Land  
Surveyor, of Prince George, in British Columbia,  
certify that I was present at and did personally  
superintend the survey represented by this plan,  
and that the survey and plan are correct. The  
survey was completed on the 19 day of XX,  
1979.

This plan lies within the Fraser- Fort George  
Regional District.

W. D. USHER & ASSOCIATES  
LAND SURVEYORS  
PRINCE GEORGE — B.C.  
MI 65-66 10544 B